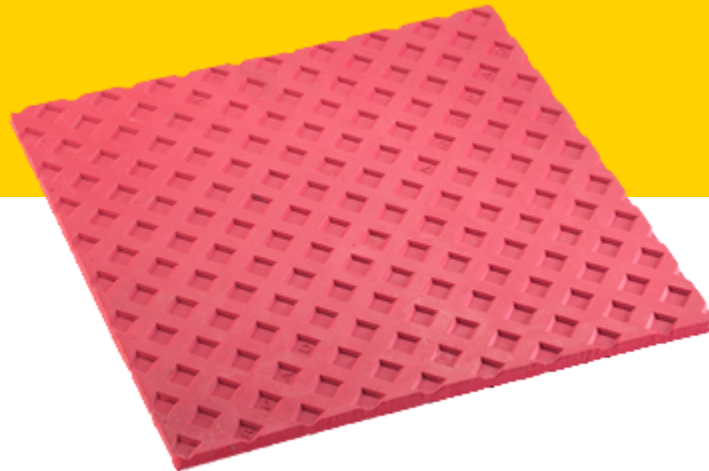




[HOME](#) » [COMMERCIAL CONSTRUCTION](#) » [NEOPRENE / ELASTOMERIC FLOOR MOUNTED NON-SEISMIC](#) » [KORPADS WAFFLE EMBOSSED BOTH SIDES](#)



NEOPRENE / ELASTOMERIC FLOOR MOUNTED NON-SEISMIC

## **KORPADS WAFFLE EMBOSSED BOTH SIDES**

Korpads are made from a high-quality, durable, neoprene pad material with waffle design molded on to both faces. It is resistant to water, oils, cleaning compounds, heat and other environments normally found in manufacturing and processing plants. Tear and abrasion resistance is excellent while tensile strength and compressive strength is extremely high. Korpads are 1/4" thick in 24" x 24" sheets and are available in load ranges to 200 lbs./sq. in. Black Korpad is for use with lighter equipment. Red Korpad is used for heavy-duty applications.

## FEATURES & BENEFITS

- Waffle design on both faces: Water, oil, cleaning compound and heat resistant
- Tear and abrasion resistant
- Available in load ranges up to 200 lbs./sq. in
- Available in black or red based on end use
- Weather-resistant Durulene™ elastomer
- Color-coded, oil-resistant elastomer provides simple identification and durability

## APPLICATIONS

- Air handling units
- Fans
- Pumps
- Chillers
- Air compressors
- HVAC equipment
- Power generation
- Electrical transformers
- Motors

## DOWNLOADS

---

### Spec Sheets

[Spec Type 1 Elastomeric Pads](#)

### Submittal Drawings

#### Korpads Waffle Embossed

[Model Korpads 60-200 lbs. Elastomeric pad .25 inch thick.pdf](#)

### Grommets

[Model Elastomeric Grommet Vibration Isolators.pdf](#)

---

## RELATED SERVICES

---

### [Engineering](#)

The engineers we employ hold the highest industry-recognized credentials in structural analysis, elastomer development and system dynamics.

### [Certification](#)

We are the first ISO accredited PCA ISO-17065, third-party certification body for special seismic certification of non-structural building components and their mounting configurations by the ICC's International Accreditation Service.

### [Test & Measurement](#)

We are the only ISO 17025:2005 Accredited Seismic Simulation Test Laboratory with a triaxial shake table owned and operated by California licensed Structural engineers.

### **Testing Services Update**

DCL now offers Nuclear Qualification and Testing services.

In partnership with [Greenberry Industrial](#), we now offer testing services that meet the requirements of ASME NQA-1.

[Call for more information.](#)

---

## RELATED PRODUCTS

---



[VLM Leveling Isolator](#)



[R Single Deflection Isolators](#)



[RD Double Deflection Isolators](#)



[RP Single Deflection Isolators w/ Positioning Pin](#)