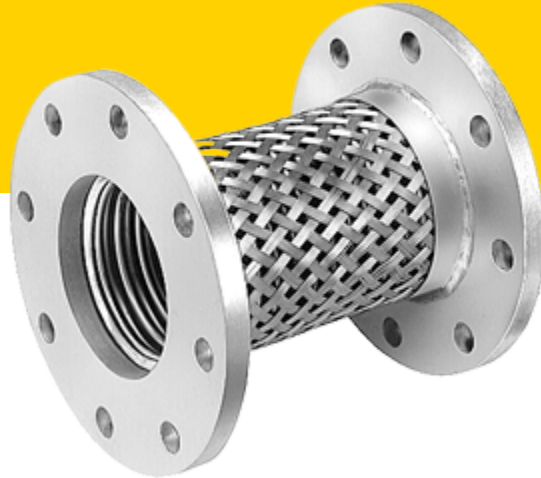




[HOME](#) » [COMMERCIAL CONSTRUCTION](#) » [FLEX CONNECTORS](#) » [STAINLESS STEEL](#)



FLEX CONNECTORS

STAINLESS STEEL

Type SS Stainless Steel flexible connectors can accommodate misalignment and attenuate mechanical vibration transmitted through the pipe wall, but do not attenuate noise. Type SS connectors have superior resistance to long-term temperature effects. For noise attenuation, rubber hose, expansion joints, and spherical connector walls are flexible, they have the ability to grow volumetrically and attenuate noise and vibration at blade-pass frequencies. This is a particularly desirable feature in uninsulated piping systems, such as for condenser water and domestic water, which may run adjacent to noise sensitive areas.

FEATURES & BENEFITS

- Superior resistance to long-term temperature effects
- Ideal for uninsulated piping systems adjacent to noise sensitive areas
- Available in single or double braided

APPLICATIONS

- Air handling units
- Pump
- Air compressors
- Power generation
- Motors
- Fans
- Chillers
- HVAC equipment
- Electrical transformers

DOWNLOADS

Spec Sheets

[Spec Type 10-SS Stainless Steel Flexible Connectors](#)

Submittal Drawings

[Model SS-PM Metal Flexible Connectors Threaded Ends](#)

[Model SS-FP Metal Flexible Connectors Flanged Ends](#)

[Model BR-FS Metal-Flex Freon Flexible Connectors](#)

[Model SS-SM-PM Seismic Metal Flexible Connector Threaded Ends](#)

[Model SS-SM-FP Seismic Metal Flexible Connector Flanged Ends](#)

[Model BR-SM-FS Seismic Metal Flexible Connectors Copper Sweat Ends](#)

RELATED SERVICES

Engineering

The engineers we employ hold the highest industry-recognized credentials in structural analysis, elastomer development and system

dynamics.

Certification

We are the first ISO accredited PCA ISO-17065, third-party certification body for special seismic certification of non-structural building components and their mounting configurations by the ICC's International Accreditation Service.

Test & Measurement

We are the only ISO 17025:2005 Accredited Seismic Simulation Test Laboratory with a triaxial shake table owned and operated by California licensed Structural engineers.

Testing Services Update

DCL now offers Nuclear Qualification and Testing services.

In partnership with [Greenberry Industrial](#), we now offer testing services that meet the requirements of ASME NQA-1.

[Call for more information.](#)

RELATED PRODUCTS



[Neoprene](#)

**MADE
IN TX**

**WE ARE AN
ESSENTIAL
MANUFACTURER
IN TEXAS**

