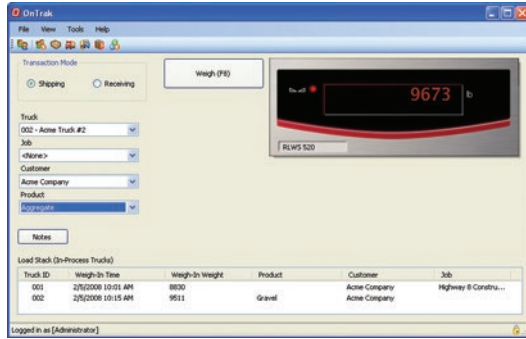
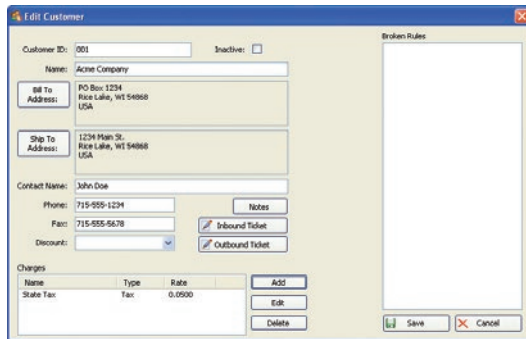


OnTrak®

TRUCK SCALE DATA MANAGEMENT



Weigh Scale



Customer Account Information

Specifications

System Requirements:

Windows® 7 and newer (x86 or x64 systems)

Databases:

4 GB max database size when using included MS SQL Server Express, unlimited with standard version of MS SQL Server
Back up and restore via included SQL Server Management Studio Express

Communications:

Support for multiple printers
Supports all Rice Lake indicator interfaces
Supports VIRTUi/VIRTUi2 interface
Optional Drivers available for non-Rice Lake weight indicators

Transaction Ticket:

User defined ticket formatting

Reports:

Comprehensive report filters
Optional custom reports

Export Data:

File transfer via XML transaction; exported reports can be saved as PDF/XLS; configurable transaction data export in .csv file format

Transaction Calculations:

Unlimited product prices and discounts
Tax calculations (does not integrate directly to financial software)

Software Support:

Database configuration, field installation and training available
Phone support packages available
Contact Rice Lake for further options

Approvals:

NTEP CC 05-107

Standard Features

- The OnTrak download has a very large file size (2.8 GB). Please make sure you have a high-bandwidth, reliable Internet connection before attempting to download. If you experience any difficulties do not hesitate to contact our technical sales department at 715-234-9171.
- Supports systems using Windows® 7 and up
- SQL Server® Express client/server database
- Comprehensive report filters
- User and administrator filters
- Backup and restore via included SQL Server Management Studio Express
- Unlimited charge/discount per product
- Ship or Receive mode for each transaction
- Exclusive database for: customer, hauler, truck, product, job, price/discount, tax, transaction
- Ethernet TCP/IP or RS-232 connectivity
- Supports VIRTUi/VIRTUi2® or Rice Lake weight indicators
- .CSV transaction file export
- Supports one or two scales

APPROVALS



Optional Features

- Image capture with Ethernet camera TCP/IP (requires SQL server upgrade through Microsoft)
- Interface to non-Rice Lake weight indicators
- Custom reports
- Database configuration
- Field installation and training
- Factory phone support

Part Numbers/Price

Part #	Description	Price
104787	OnTrak activation code	\$1,395.00
101062	OnTrak CD-ROM*	\$80.00

OnTrak trial at www.ricelake.com/ontrak

Options/Accessories

Part #	Description	Price
Consult	Non-Rice Lake indicator interface	\$195.00
Consult	Custom reports	\$175.00/hour
Consult	Database configuration	\$175.00/hour
FLD-INSTALL	Field installation	\$1,395.00/ weekday plus expenses
104789	Phone support, one hour	\$125.00
104790	Phone support, 10 hours	\$1,250.00
104791	Phone support, 25 hours	\$3,125.00
104792	Phone support, 50 hours	\$6,250.00
101003	Additional OnTrak manual	\$55.00