

VIRTUI2®

PC-Based HMI for iQUBE2®



VIRTUI2®

Specifications

Minimum System Requirements:

Windows® 8.1 through 10
 Serial port
 USB to serial converter, or Ethernet TCP/IP for connection to iQUBE2
 Additional serial ports are required for connections to printers/remote displays

Status Annunciators:

Units (lb, kg, short tons (tn), metric tons (t), NONE)
 gross/net, motion, center of zero

Approvals:

NTEP CC 04-058 Classes III and IIIIL at 10,000d

Virtui2 is a Windows®-based desktop application that works with iQUBE2 to replicate simple indicator functionality ideal for system integrators and OEMs wanting to provide a PC-based solution. Load cells are individually monitored and calibrated, making setup easy.

Standard Features

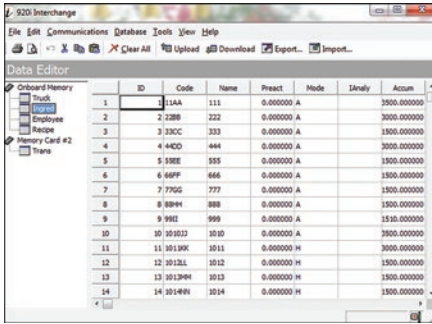
- Virtual front panel consists of display and five-button keypad
- Web browser-based iQUBE2® cell status
- Provides local and remote reporting of diagnostics and error conditions
- Up to four scale systems and one total scale
- Primary/secondary units configuration (lb, kg, short tons, metric tons, none)
- RS-232 communications at up to 460 Kbps
- Electronic Data Processing (EDP) port over RS-232 and TCP/IP
- Printer port for output-only, simplex communications
- Two print formats
- Provides iQUBE2 configuration screen and iQUBE2 digital I/O configuration
- Supports iQUBE2 diagnostics with configurable error viewing
- Peak weight history
- Recalibration notification
- Concentrated load capacity (CLC)
- Section capacity

APPROVALS

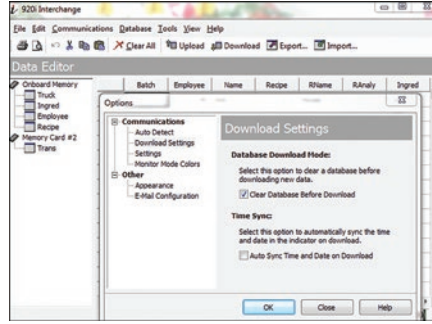


Part Number/Price

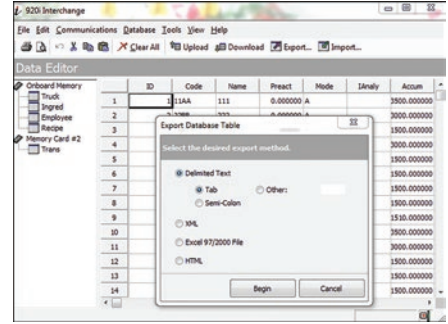
Part #	Description	Price
108435	Virtual Indicator demo CD	N/A
108436	Activation part number - requires machine ID and customer's email address	\$500.00



Database Editor



Communication Settings for Download



Export or Import Data

Specifications

Minimum System Requirements:
Windows 7 or greater

Interchange database management software is used to setup a custom job file for each database you need to export. Manually or automatically run the job file by setting a predetermined time using Windows® Task Scheduler.

Standard Features

- Edit and Manage Databases
- Setup using an export job wizard
- Connect using RS-232, RS-485 or Ethernet TCP/IP
- Program will connect to the indicator and upload the current database structure
- Select the desired database
- Export database table file types: delimited text, XML, XLS, HTML

Part Number/Price

Part #	Description	Price
72809	Interchange database software	\$295.00