

RoughDeck® AX

Tandem Axle Scale



Specifications

End Loading Capacity:
133% full scale at 30,000 lb

Warranty:
Weldment five years, load cells two years, all other components one-year limited warranty

Standard Features

- System includes two platforms with anchor brackets and four on/off ramps with anchor tabs (anchor bolts not included)

Scale

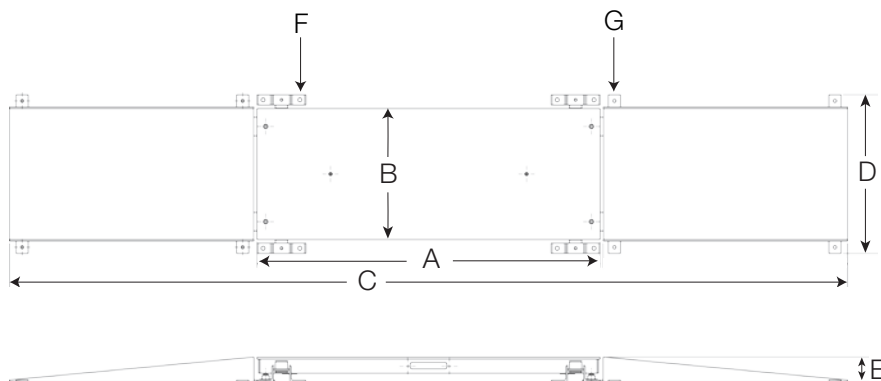
- (W x L x H): 32 x 84 x 6 in
- Axle capacity - tandem platforms - 60,000 lb (two scales 30,000 lb each)
- Includes (2) 3/4-10 NC eye bolts
- Contains four environmentally sealed, IP67 20,000 lb single-ended shear beam load cells per platform
- Treaded top plate with side access junction box
- JB4SS TuffSeal® signal trim junction box
- Top access foot adjustment holes
- Carbon steel captured ball feet
- 20 ft SURVIVOR® EL147HE cable
- Non-Legal for Trade

Ramps

- (W x L x H) 32 x 60 x 6 in
- Treaded top plate

Part Number/Price

Part #	Description	Dimensions	Est. Weight	Price
107637	60,000 lb (30,000 lb each)	32 x 84 x 6 in	3,600 lb	\$13,695.00
RoughDeck AX Bundle Package				
153058	60,000 lb (30,000 lb each) includes 920i Universal 115 VAC with short axle program, 4 in LaserLight 2 with Stop/Go light, TM-U295 and RS-232 cable	32 x 84 x 6 in	3,700 lb	\$17,775.00



Dimensions	
A	84.0 in (213.36 cm)
B	32.0 in (81.28 cm)
C	205.5 in (521.97 cm)
D	38.75 in (98.42 cm)
E	6.0 in (15.24 cm)
F	1.0 in (2.54 cm)
G	0.75 in (1.91 cm)