

Dimensions

Rated Capacity	A	B1	C	D	E	F	G	H	I	Conduit Adapter
lb/in										
1,000-10,000	4.00	2.00	3.25	3.50	0.40	3/8-16 UNC	1.35	0.375	0.75	—
15,000	4.00	2.00	3.25	3.50	0.40	3/8-16 UNC	1.60	0.625	0.75	—
20,000-50,000	7.00	3.75	5.50	6.00	0.63	1/2-13 UNC	2.48	0.750	1.30	1/2-14NPT

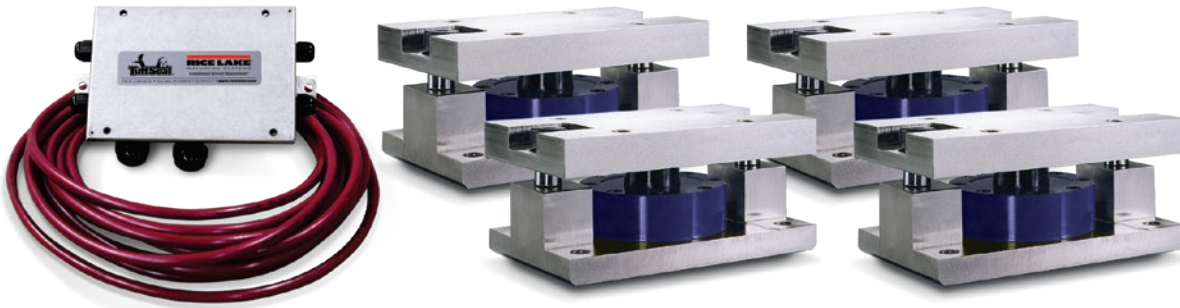
Order Information

Load Rating (per module)	Part#	Price
Single Module		
1,000 lb	117050	\$1,045.00
2,500 lb	117051	\$1,045.00
5,000 lb	117052	\$1,045.00
10,000 lb	117140	\$1,045.00
15,000 lb	117053	\$1,045.00
20,000 lb	117054	\$1,755.00
25,000 lb	117055	\$1,755.00
35,000 lb	117056	\$1,755.00
50,000 lb	117057	\$1,755.00
Top Plates (Stainless Steel) with bolts		
1,000 lb-15,000 lb	91207	\$115.00
20,000 lb-50,000 lb	91210	\$275.00
Top Plates (Mild Steel) with bolts		
1,000 lb-15,000 lb	124758	\$55.00
20,000 lb-50,000 lb	125141	\$115.00

WEIGH MODULES

RL2200 Series

Tank, Hopper and Vessel Weighing Assembly

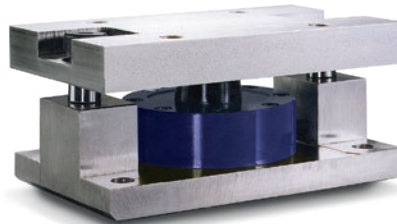


Available in configurations with three or four mounting assemblies.
Picture is a representation of actual product

The RL2200 Series mounts are ideal for use in tank, hopper, vessel and many other applications. The low-profile design allows for economical solutions in a competitive marketplace. This rugged, high-precision mount is designed for easy installation and does not require check rods or other stabilizing hardware. The RL2200 mount has the added feature of self centering, allowing for side loads without sacrificing performance.

Specifications

- Full Scale Output:**
4.0 mV/V, 2.0 mV/V (2500 lb)
- Bridge Resistance:**
350 ohms nominal
- Material/Finish:**
High-alloy steel, painted
- Safe Overload:**
150% Full Scale
- Rated Excitation:**
5-10 VDC (20 V maximum)
- Nonlinearity:**
0.05% Full Scale
- Hysteresis:**
0.03% Full Scale
- Temperature:**
Compensated range:
15°F to 115°F/-9°C to 46°C
- Insulation Resistance:**
5,000 megohms
- Seal Type:**
Environmentally sealed
- *Cable Length:**
30 ft/9.1 m
- Cable Color Code:**
Red + Excitation
Black – Excitation
White + Signal
Green – Signal
- Warranty:**
Two-year limited warranty
- *Compression load application*



Assembly with integral RL2200 compression disk load cell.

Complete Kit Includes:

- One JB4SS NEMA Type 4X stainless steel signal trim junction box
- Three or four RL2200 high-alloy, zinc-plated steel mounting assemblies
- Three or four RL2200 compression disk load cells
- 25 ft of our hostile environment EL147HE SURVIVOR® load cell cable

Standard Features:

- Capacities: 2500-50,000 lb (1134-22,680 kg)
- Low-profile design
- High 4 mV/V output (2 mV/V, 2500 lb)
- Self-centering in all directions—able to withstand excessive side loads
- Self-checking assembly

Applications

- Tank, hopper or vessel weighing
- Belt or roller conveyors
- Scale platforms and screw feeders