**Dimensions**

Rated Capacity	C	H Min/ Max	H1	L	L1	L2	L3	L4	L5	L6	L7	W	W1	W2
Mild Steel Construction														
lb/in														
250-5,000 SE*	0.62	5.25/5.56	0.50	6.00	2.00	1.00	3.00	2.00	0.68	1.94	4.00	5.00	4.00	2.00
5,000 LE** -10,000	0.62	6.12/6.62	0.50	7.75	3.00	1.50	3.75	2.00	1.03	2.97	4.00	5.00	4.00	2.00
kg/mm														
113.4-2,268.0	15.8	133.4/141.2	12.7	152.4	50.8	25.4	76.2	50.8	17.3	49.3	101.6	127.0	101.6	50.8
2,268.0-4,535.9	15.8	155.4/168.1	12.7	196.9	76.2	38.1	95.3	50.8	26.2	75.4	101.6	127.0	101.6	50.8
Stainless Steel Construction														
lb/in														
1,000-4,000	0.62	5.25/5.56	0.50	6.00	2.00	1.00	3.00	2.00	0.68	1.94	4.00	5.00	4.00	2.00
5,000-10,000	0.62	6.12/6.62	0.50	7.75	3.00	1.50	3.75	2.00	1.03	2.97	4.00	5.00	4.00	2.00
kg/mm														
453.6-1,814.4	15.8	133.4/141.2	12.7	152.4	50.8	25.4	76.2	50.8	17.3	49.3	101.6	127.0	101.6	50.8
2,268.0-4,535.9	15.8	155.4/168.1	12.7	196.9	76.2	38.1	95.3	50.8	26.2	75.4	101.6	127.0	101.6	50.8

Mild Steel Order Information

Load Rating (Per Module)*	Part#	Price
Single Module (Does NOT Include Load Cell)		
250 lb-5,000 lb SE	113.4 kg-2,268.0 kg 17817	\$340.00
5,000 lb LE-10,000 lb	2,268.0 kg-4,535.9 kg 17819	\$365.00
3-Module Kit		
250 lb*	113.4 kg 18075	\$2,055.00
500 lb*	226.8 kg 18076	\$2,055.00
1,000 lb	453.6 kg 18077	\$2,055.00
2,000 lb	907.2 kg 18078	\$2,055.00
2,500 lb	1,134.0 kg 18079	\$2,055.00
3,000 lb	1,360.8 kg 18080	\$2,055.00
4,000 lb	1,814.4 kg 18081	\$2,055.00
5,000 lb SE	2,268.0 kg 18082	\$2,055.00
5,000 lb LE	2,268.0 kg 18083	\$2,370.00
10,000 lb	4,535.9 kg 18084	\$2,370.00
4-Module Kit		
250 lb*	113.4 kg 18085	\$2,670.00
500 lb*	226.8 kg 18086	\$2,670.00
1,000 lb	453.6 kg 18087	\$2,670.00
2,000 lb	907.2 kg 18088	\$2,670.00
2,500 lb	1,134.0 kg 18089	\$2,670.00
3,000 lb	1,360.8 kg 18090	\$2,670.00
4,000 lb	1,814.4 kg 18091	\$2,670.00
5,000 lb SE	2,268.0 kg 18092	\$2,670.00
5,000 lb LE	2,268.0 kg 18093	\$3,070.00
10,000 lb	4,535.9 kg 18094	\$3,070.00

SE=Small envelope; LE=Large envelope

* Non NTEP Certified using RL3000 or RL32018 load cells.

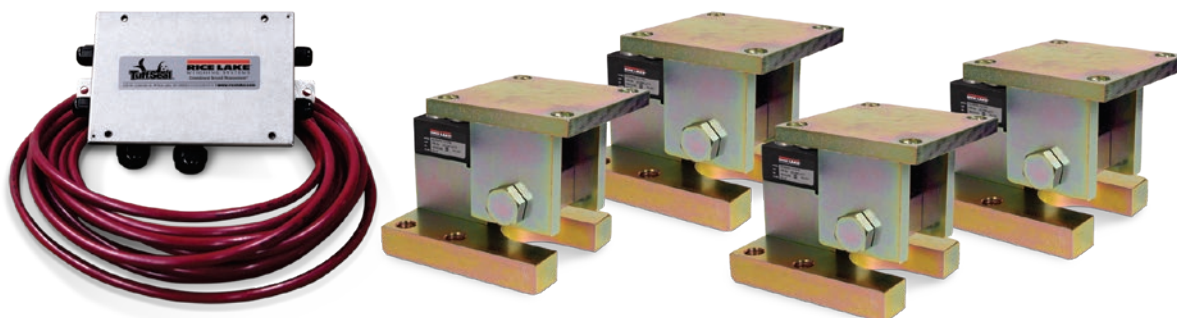
Stainless Steel Order Information

Load Rating (Per Module)**	Part#	Price
Single Module (Does NOT Include Load Cell)		
250 lb-4,000 lb	113.4 kg-1,814.4 kg 17818	\$550.00
5,000 lb-10,000 lb	2,268.0 kg-4,535.9 kg 17820	\$575.00
3-Module Kit		
1,000 lb	453.6 kg 18095	\$2,785.00
2,000 lb	907.2 kg 18096	\$2,785.00
2,500 lb	1,134.0 kg 18097	\$2,785.00
4,000 lb	1,814.4 kg 18099	\$2,785.00
5,000 lb LE	2,268.0 kg 18100	\$3,015.00
10,000 lb	4,535.9 kg 18101	\$3,015.00
4-Module Kit		
1,000 lb	453.6 kg 18102	\$3,710.00
2,000 lb	907.2 kg 18103	\$3,710.00
2,500 lb	1,134.0 kg 18104	\$3,710.00
4,000 lb	1,814.4 kg 18106	\$3,710.00
5,000 lb LE	2,268.0 kg 18107	\$4,025.00
10,000 lb	4,535.9 kg 18108	\$4,025.00
Dummy Cell		
Dummy load cell	1 k-5 k SE* 22980	\$47.00

** Load rating is per module

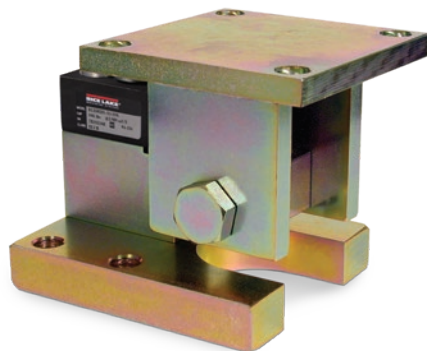
RL1800 Series Painted Load Cell Version

Stainless Steel Weigh Modules



Available in configurations with three or four mounting assemblies.
Picture is a representation of actual product

The RL1800 Series mounting assembly kit utilizes several Rice Lake Weighing Systems components to provide an unmatched level of performance in tank and hopper weighing applications. The RL1800 Series kit is ideally suited for indoor and outdoor process control operations with medium-range capacities. Each module combines multi-directional movement and self-checking capabilities. The load cells used are NTEP Certified in capacities of 1,000 lb to 10,000 lb.



Module with RL35023S painted single-ended beam load cell.

Complete Kit Includes:

- One JB4SS NEMA Type 4X stainless steel signal trim junction box
- Three or four RL1800 stainless steel compression mounts
- Three or four RL35023S painted stainless steel single-ended beam load cells,
- 25 ft of our hostile environment EL147HE SURVIVOR® load cell cable

Standard Features:

- Capacities (per module): 1,000-10,000 lb (453.6-4,535.9 kg)
- NTEP Certified cells in 1,000-10,000 lb (453.6-4,535.9 kg) capacities
- Stainless steel construction
- Center-pivoted, tension loading design
- Self-checking, multi-directional movement
- Load is suspended on high-strength bolt instead of wire rope
- Design incorporates spherical washers for self centering
- Painted load cells for corrosion protection

Applications

- Conveyors
- Medium-capacity tanks and hoppers

Load Cell Certifications

