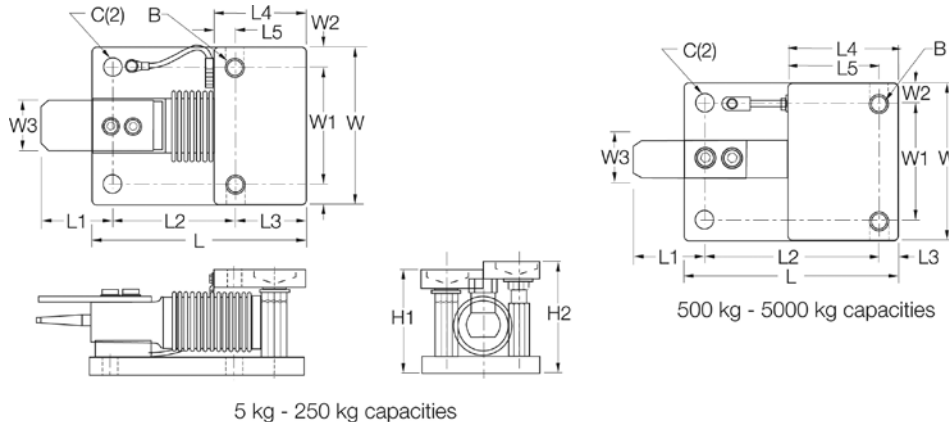


RL1700 HE

Light- to Medium-capacity Weigh Modules



Dimensions

Rated Capacity	C	B	*H1	**H2	L	L1	L2	L3	L4	L5	W	W1	W2	W3
kg/mm														
5-250	12.9	1/2-20 UNF	80.0	86.1	131.8	63.7	76.0	42.0	56.0	13.97	96.0	70.0	12.9	25.4
500-2,000	12.9	5/8-18 UNF	101.6	109.4	165.0	70.0	129.5	14.9	80.0	59.94	110.0	70.0	20.0	31.7
5,000	20.0	3/4-10 UNC	135.0	143.0	215.0	81.0	161.0	20.0	90.0	70.5	150.0	90.0	30.0	40.0
lb/in														
11-550	0.53	1/2-20 UNF	3.13	3.39	5.19	2.52	2.99	1.65	2.20	0.56	3.99	2.76	0.62	1.00
1,100-4,400	0.53	5/8-18 UNF	4.00	4.31	6.50	2.80	5.10	0.61	2.97	2.36	4.33	2.76	0.79	1.25
11,000	0.78	3/4-10 UNC	5.31	5.63	8.46	3.19	6.34	0.79	3.56	2.78	5.91	3.54	1.18	1.57

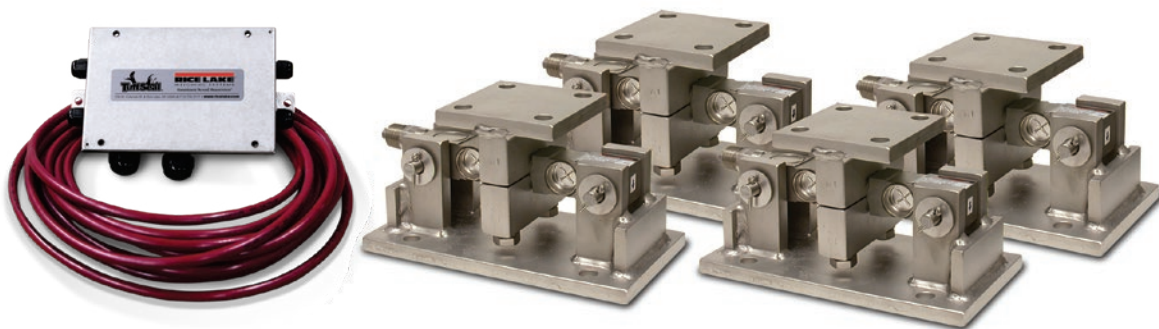
* In weighing position ** In jacked-up position for load cell shipping or removal

Order Information

Load Rating (Per Module)	Part #	Price
OIML C3-Certified Load Cells Included		
5 kg	32687	\$875.00
10 kg	32688	\$875.00
20 kg	32689	\$875.00
50 kg	32690	\$875.00
100 kg	32691	\$875.00
200 kg	32692	\$875.00
250 kg	32693	\$875.00
500 kg	32974	\$1,065.00
1,000 kg	32973	\$1,065.00
2,000 kg	32972	\$1,065.00
5,000 kg	32971	\$1,315.00
3-Module Kit		
5 kg	32920	\$2,825.00
10 kg	32921	\$2,825.00
20 kg	32922	\$2,825.00
50 kg	32923	\$2,825.00
100 kg	32924	\$2,825.00
200 kg	32925	\$2,825.00
250 kg	32926	\$2,825.00
500 kg	32980	\$3,380.00
1,000 kg	32981	\$3,380.00
2,000 kg	32982	\$3,380.00
5,000 kg	32983	\$4,215.00
4-Module Kit		
5 kg	32927	\$3,730.00
10 kg	32928	\$3,730.00
20 kg	32929	\$3,730.00
50 kg	32930	\$3,730.00
100 kg	32931	\$3,730.00
200 kg	32932	\$3,730.00
250 kg	32933	\$3,730.00
500 kg	32984	\$4,450.00
1,000 kg	32985	\$4,450.00
2,000 kg	32986	\$4,450.00
5,000 kg	32987	\$5,260.00

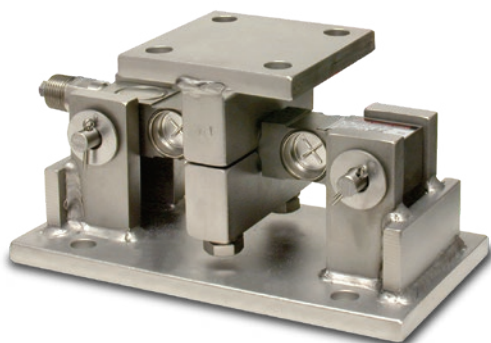
RL1600 HE

Medium-capacity Weigh Modules



Available in configurations with three or four mounting assemblies.
Picture is a representation of actual product.

The RL1600 HE mounting module kit utilizes several Rice Lake Weighing Systems components to provide an unmatched level of performance in tank and hopper weighing applications. The RL1600 HE kit is ideally suited for indoor and outdoor process control operations in the medium-capacity ranges. Each module incorporates self-checking capabilities for thermal expansion and contraction.



Fabricated stainless steel module with RL75016WHE double-ended beam load cell.

Complete Kit Includes:

- One JB4SS NEMA Type 4X stainless steel signal trim junction box
- Three or four RL1600 HE stainless steel compression mounts
- Three or four RL75016 WHE stainless steel, hermetically sealed double-ended shear beam load cells
- 25 ft of our hostile environment EL147HE SURVIVOR® load cell cable

Standard Features:

- Capacities (per module): 1,000lb-25,000lb (453.6kg-11,339.8kg)
- All stainless steel construction
- Self-checking, easy-to-use design allows module to be bolted directly to tank leg without requiring additional mounting plates or load buttons
- Hermetically sealed IP66/69K protected load cells
- Double-ended shear beam design, center loaded

Applications

- Medium-capacity tanks, bins and hoppers
- Bulk material management
- Ingredient batching, mixing and blending

Load Cell Certifications