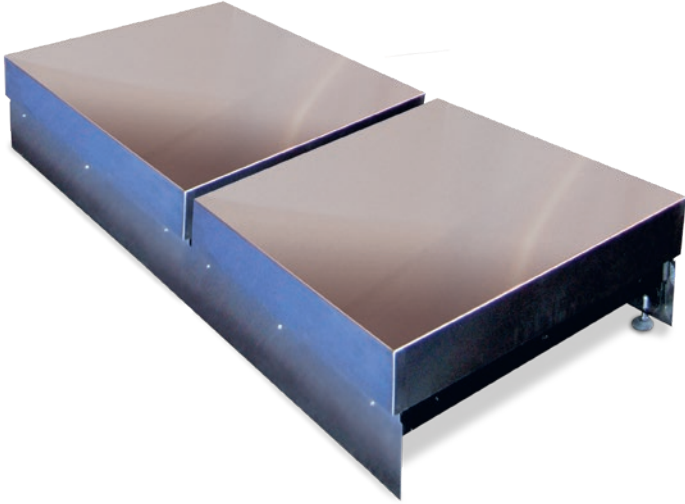


BenchMark® HD-3 Aviation

Heavy Duty Bench Scales



APPROVALS



Specifications

Load Cell, NTEP Certified:

IP67 aluminum, environmentally sealed

Output Impedance:

350 Ω

Maximum Overload:

200%

Overload Protection:

Five-point, independently adjusted

Cable Length:

10 ft (3 m)

Compensated Temperature Range:

14° F to 104° F (-10° C to 40° C)

Warranty:

Two-year limited warranty

Approvals:

NTEP CC 06-010, Class III 5,000 d

Measurement Canada AM-5625, Class III 5,000 d

Load cell is cFMus

✈ Ideal for Aviation Weighing. A complete system can be sold with the Tracer® AV. Reference Aviation section for specifications.

Standard Features

- Heavy-duty designed mild steel base construction with 304 stainless steel cover
- Polyurethane rubber leveling feet with stainless steel stems

Part Number/Price

Part #	Capacity	Platform Dimensions	Est. Weight	Price
Consult	500 lb (225 kg)	L x W x 12 in	330 lb	Consult

*Note: Maximum size is up to 36 in x 36 in, height is always 12 in
L x W supplied by customer.*

