

Part Number/Price

Part #	Platform Capacity	Dimensions	Est. Weight	Price
18575*	2 lb (1 kg)	10 x 10 x 3.15 in	13 lb	\$640.00
18576	5 lb (2.5 kg)	10 x 10 x 3.15 in	13 lb	\$640.00
18577	10 lb (5 kg)	10 x 10 x 3.15 in	13 lb	\$640.00
18578	20 lb (10 kg)	10 x 10 x 3.15 in	13 lb	\$640.00
18579	30 lb (15 kg)	10 x 10 x 3.15 in	13 lb	\$640.00
32914	30 lb (15 kg)	12 x 12 x 3.25 in	14 lb	\$720.00
32913	50 lb (25 kg)	12 x 12 x 3.25 in	14 lb	\$720.00
35198	100 lb (50 kg)	12 x 12 x 3.25 in	14 lb	\$720.00

Options/Accessories

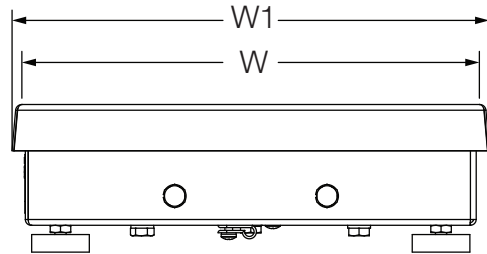
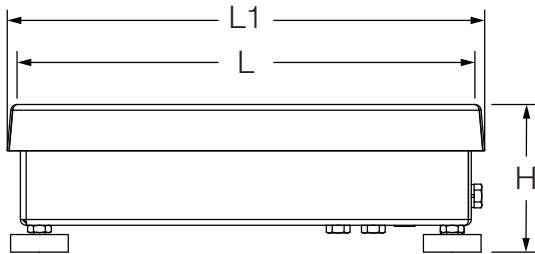
Part #	Description	Price
Consult	Columns, Ball Transfer Tops, Roller Conveyor Tops, Carts available	See end of section for details

Dimensions

Part #	Capacity	Platform Size (L x W)	L1/W1	H
18575*	2 lb (1 kg)	10 x 10 in	10.25 in	3.15 in
18576	5 lb (2.5 kg)	10 x 10 in	10.25 in	3.15 in
18577	10 lb (5 kg)	10 x 10 in	10.25 in	3.15 in
18578	20 lb (10 kg)	10 x 10 in	10.25 in	3.15 in
18579	30 lb (15 kg)	10 x 10 in	10.25 in	3.15 in
32914	30 lb (15 kg)	12 x 12 in	12.25 in	3.25 in
32913	50 lb (25 kg)	12 x 12 in	12.25 in	3.25 in
35198	100 lb (50 kg)	12 x 12 in	12.25 in	3.25 in

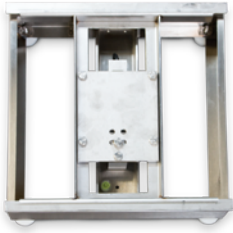
*Non-NTEP or Measurement Canada approved

Note: 1"=25.4 mm



BenchMark® CW-80B

Light-capacity Bench Scales



Standard Features

- 304 stainless steel construction
- LifeGuard™ base design isolates load cell from overloads and shock loads for added durability
- Specially designed adjustable support feet provide exceptional traction and won't scratch surfaces
- NTEP Certified, IP67 stainless steel load cell

APPROVALS



Specifications

Load Cell, NTEP Certified:

IP67 stainless steel and environmentally sealed

Output Impedance:

350 Ω

Maximum Overload:

200%

Overload Protection:

Shock-absorbing spider

Cable Length:

10 ft (3 m)

Compensated Temperature Range:

14° F to 104° F (-10° C to 40° C)

Warranty:

Two-year limited warranty

Approvals:

NTEP CC 96-107, Class III, 3000 d,
Measurement Canada AM-5156, Class III 3,000 d
Load cell is FM approved