

CG SERIES GENERATOR



The CG series generator is a two chemical system using PureMax (a proprietary blend of chlorate and reducing agents) and high strength sulfuric acid to chlorine dioxide at over 95% efficiency (Chlorate Conversion to ClO₂ in the final product). This process is the most economical way to produce medium to large amounts of ClO₂ (20 to 4000lbs/day). The CG generator produces ClO₂ on demand, safely, efficiently and without the need for additional storage or delivery pumps (up to 30psig delivery pressure without the need for a booster pump).

The CG series has very few moving parts making it very low maintenance and reliable to operate even under extremely harsh conditions.

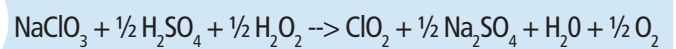
The system has built in flow pacing capability (with the use of an external flowmeter signal), production tracking and communications allowing remote system monitoring. The system is built with redundant safety interlocks and all operations are performed within the generator cabinet providing a safe and clean operating system.

Pure Advantages

- 95%+ Efficiency
- On demand generation
- Large production range (20:1 turn down)
- Expert engineering and technical support
- Few moving parts, Low Maintenance, High Reliability
- Low operating cost – enhanced ROI

PureLine
CG

Reaction Chemistry

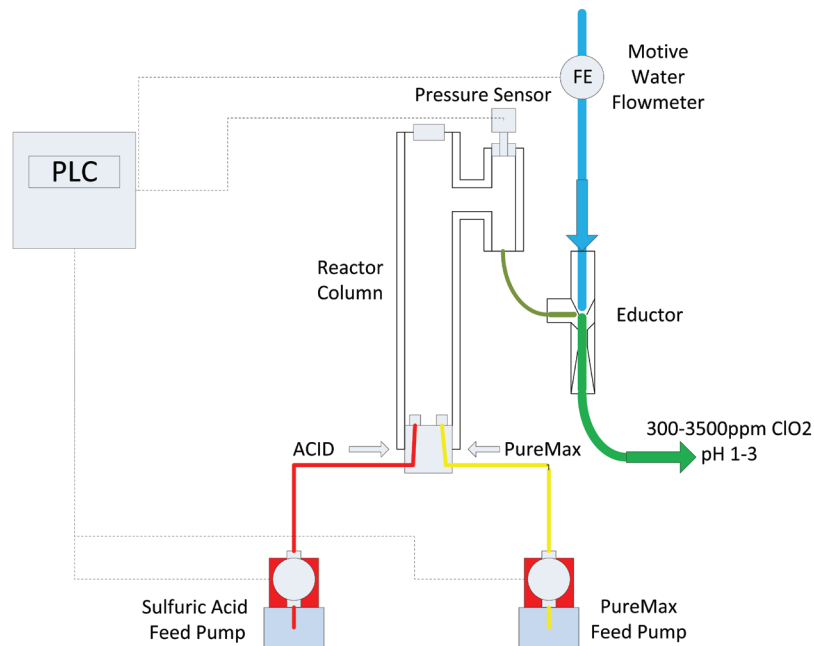


Specifications

Capacity:	1 lb to 160 lbs per hr
Chemical Usage:	PureMax – 4.2 lbs/lb of ClO ₂ 78% Sulfuric Acid – 4.9 lbs/lb of ClO ₂
Electrical Power:	220 VAC, 1PH, 30A Service (60A for 160lb/hr model)
Inlet Water:	Type: 20 Mesh Filter Water (Process or Potable with low Ba+, Sr+ or Ca+) Flow: Required Water Flow is 7 times generator size (CG-20 = 14gpm, CG-40=28gpm) Pressure: 150psig with <5psig fluctuation. Booster Pump Available (recommended)
PLC & HMI:	Allen Bradley PLC and Color Touch Screen
Cabinet:	White polypropylene
Dimensions:	52.25" x 75.5" x 28.25"
Weight:	450 lbs

Co-Products:

- Excess H₂SO₄ (3.7lbs per lb of ClO₂, product pH 1-3)
- Oxygen Gas

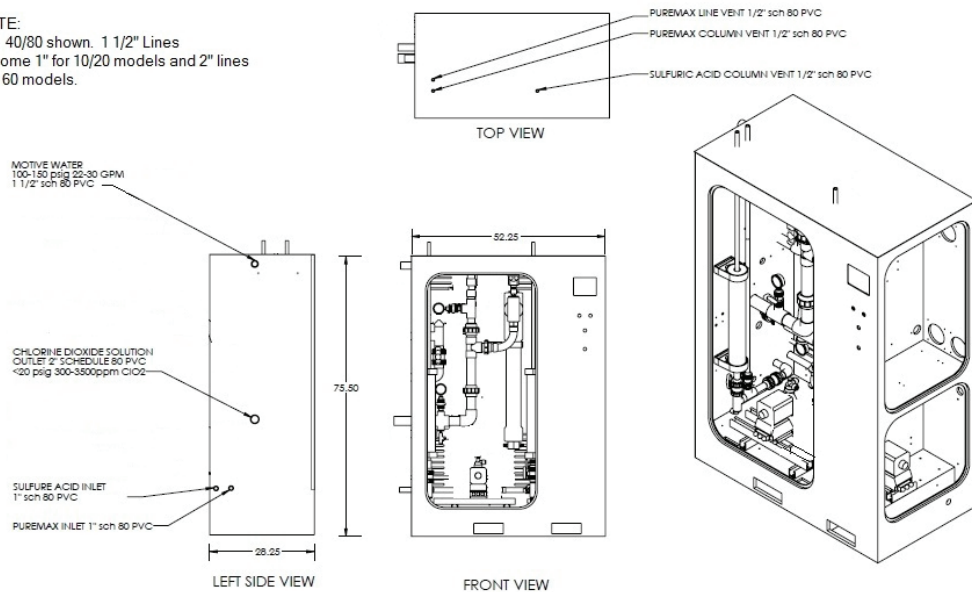


▲ Process Flow Diagram

▼ CG-Series Electrochemical Generator

Common Platform — 1 lb to 160 lbs/hour

NOTE:
CG 40/80 shown. 1 1/2" Lines
become 1" for 10/20 models and 2" lines
for 160 models.



Experts in the generation and application of chlorine dioxide

Pureline offers a complete line of chlorine dioxide products, solutions and accessories.



PureLine
847 963 8465
info@pureline.com
1241 N. Ellis Street
Bensenville, IL 60106
pureline.com