

Printer Kiosk

Direct-thermal and Thermal-transfer Printer Kiosk

Part Numbers/Price

Part #	Description	Price
92971	Printer kiosk, inbound base unit 115 VAC (printer not included)	\$2,775.00
112836	Printer kiosk, thermal ticket printer 20 x 20 x 12 in painted mild steel enclosure	\$3,600.00
193639	Printer kiosk, thermal ticket printer (Ethernet), 20 x 20 x 12 in painted mild steel enclosure	\$3,675.00

A test plan is included with each kiosk.

Options/Accessories

Part #	Description	Price
119693	200 watt heater	\$550.00
119761	Ethernet unmanaged switch, five-port	\$298.00
119946	Single port Ethernet server	\$435.00
120040	Dual port Ethernet server	\$605.00
93463	Printer riser plate for Honeywell I-4212e	\$275.00
93468	Printer riser plate for Intermec/Honeywell 3400e	\$275.00
176452	HID smart card reader	\$550.00
131143	Honeywell I-4212e, direct thermal RS-232, parallel and USB	\$1,595.00
64884	Thermal transfer option Honeywell	\$100.00
131150	Ethernet option Honeywell	\$325.00
53918	Cutter option Honeywell	\$695.00
109298	Tag, direct thermal, 4 in wide, 7.2 pt continuous 480 ft roll	\$40.00
Consumables		
105445	Paper roll 6 in OD, one ply thermal 80 mm (3.1 in) 710 ft per roll	\$25.00
105446	Paper roll 8 in OD, one ply thermal 80 mm (3.1 in) 1268 ft per roll	\$27.00
89190	TT Tag stock 4 in wide, 7.5 pt continuous 400 ft roll	\$38.50
34056	Transfer ribbon, 4 in wide GPR Plus black 1181 ft roll	\$25.25

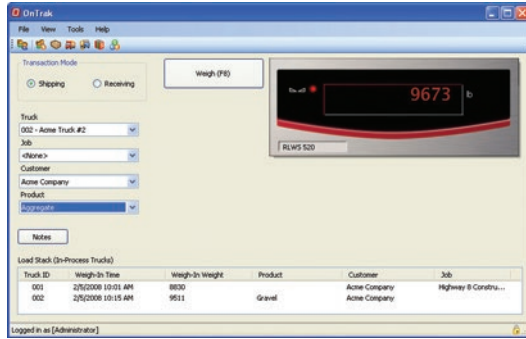
OnTrak™ Enterprise

Truck Data Management Software

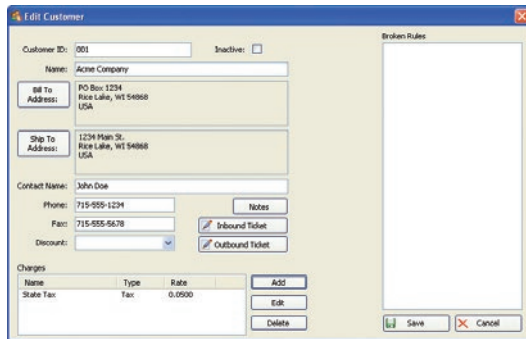
AUTOMATED TICKETING

OnTrak™ ENTERPRISE

TRUCK SCALE DATA MANAGEMENT



Weigh Scale



Customer Account Information

Specifications

System Requirements:

- Windows® 10 version 1607 or newer (64 bit)
- Minimum 2.0 GHz processor
- 250 MB hard drive space
- Minimum 8 GB RAM
- Microsoft SQL Server 2016 (Express edition included)
- Chrome, Microsoft Edge, Firefox or Safari web browser

Databases:

- 4 GB max database size when using included MS SQL Server Express, unlimited with standard version of MS SQL Server
- Back up and restore via included SQL Server Management Studio Express

Communications:

- Support for multiple printers
- Supports all Rice Lake indicator interfaces
- Supports VIRTUi/VIRTUi2 interface
- Optional Drivers available for non-Rice Lake weight indicators

Transaction Ticket:

- User defined ticket formatting

Reports:

- Comprehensive report filters
- Optional custom reports

Export Data:

- File transfer via XML transaction; exported reports can be saved as PDF/XLS; configurable transaction data export in .csv file format

Transaction Calculations:

- Unlimited product prices and discounts
- Tax calculations (does not integrate directly to financial software)

Software Support:

- Database configuration, field installation and training available
- Phone support packages available
- Contact Rice Lake for further options

Approvals:

- NTEP CC 05-107

Standard Features

- The OnTrak download has a very large file size (2.8 GB). Please make sure you have a high-bandwidth, reliable Internet connection before attempting to download. If you experience any difficulties do not hesitate to contact our technical sales department at 715-234-9171.
- Supports systems using Windows® 10 version 1607 or newer
- Microsoft SQL Server® Express client/server database
- Comprehensive report filters
- User and administrator filters
- Backup and restore via included SQL Server Management Studio Express
- Unlimited charge/discount per product
- Ship or Receive mode for each transaction
- Exclusive database for: customer, hauler, truck, product, job, price/discount, tax, transaction
- Ethernet TCP/IP or RS-232 connectivity
- Supports VIRTUi/VIRTUi2® or Rice Lake weight indicators
- .CSV transaction file export
- Supports one or two scales

APPROVALS



Optional Features

- Image capture with Ethernet camera TCP/IP (requires SQL server upgrade through Microsoft)
- Interface to non-Rice Lake weight indicators
- Custom reports
- Database configuration
- Field installation and training
- Factory phone support

www.ricelake.com | Phone: 800-472-6703

RICE LAKE