

Part Number/Price

Part #	Platform Capacity	Dimensions	Est. Weight	Price
35075	6 lb (3 kg)	10 x 10 x 3.15 in	13 lb	\$770.00
35076	10 lb (5 kg)	10 x 10 x 3.15 in	13 lb	\$770.00
35077	15 lb (7 kg)	10 x 10 x 3.15 in	13 lb	\$770.00
35078	30 lb (15 kg)	10 x 10 x 3.15 in	13 lb	\$770.00
35079	30 lb (15 kg)	12 x 12 x 3.25 in	14 lb	\$850.00
35080	60 lb (30 kg)	12 x 12 x 3.25 in	14 lb	\$850.00

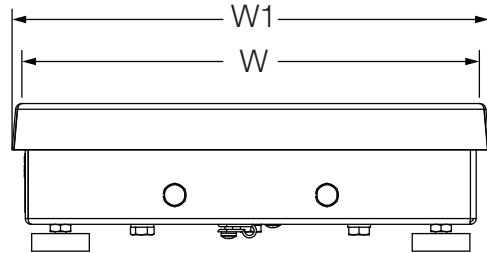
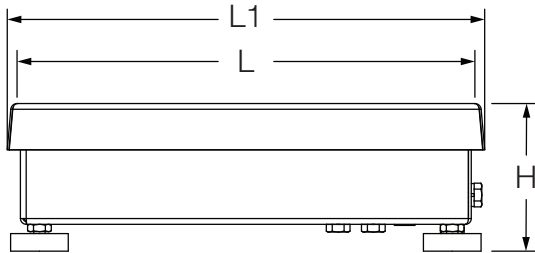
Options/Accessories

Part #	Description	Price
Consult	Columns, Ball Transfer Tops, Roller Conveyor Tops, Carts available	See end of section for details

Dimensions

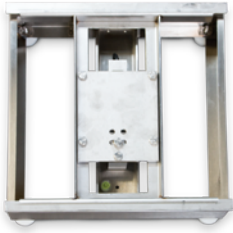
Part#	Capacity	Platform Size (L x W)	L1/W1	H
35075	6 lb (3 kg)	10 x 10 in	10.25 in	3.15 in
35076	10 lb (5 kg)	10 x 10 in	10.25 in	3.15 in
35077	15 lb (7 kg)	10 x 10 in	10.25 in	3.15 in
35078	30 lb (15 kg)	10 x 10 in	10.25 in	3.15 in
35079	30 lb (15 kg)	12 x 12 in	12.25 in	3.25 in
35080	60 lb (30 kg)	12 x 12 in	12.25 in	3.25 in

Note: 1"=25.4 mm



BenchMark® SL/HE

Light-capacity Bench Scales



Standard Features

- 304 stainless steel construction
- LifeGuard™ base design isolates load cell from overloads and shock loads for added durability
- Specially designed adjustable support feet provide exceptional traction and won't scratch surfaces
- NTEP Certified, IP69K stainless steel, hermetically sealed load cell

APPROVALS



Specifications

Load Cell, NTEP Certified:

IP69K stainless steel, hermetically sealed

Output Impedance:

350 Ω

Maximum Overload:

200%, except 150% for 30 lb

Overload Protection:

Shock-absorbing spider

Cable Length:

10 ft (3 m)

Compensated Temperature Range:

14° F to 104° F (-10° C to 40° C)

Warranty:

Three-year limited warranty
(includes water ingress)

Approvals:

NTEP CC 95-072, Class III 5,000 d

Measurement Canada AM-5082, Class III 5,000 d

Load cell is FM approved