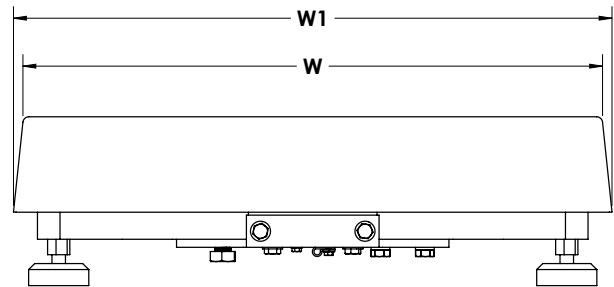
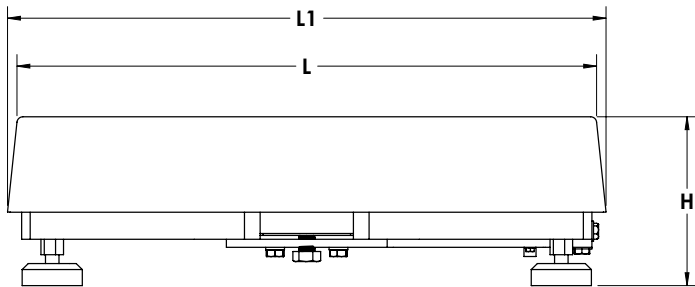


Options/Accessories

Part #	Description	Price
Consult	Columns, Ball Transfer Tops, Roller Conveyor Tops, Carts available	See end of section for details

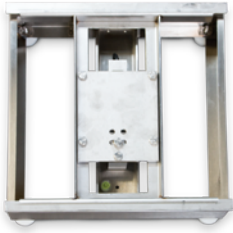
Dimensions

Part #	Capacity	Platform Size (L x W)	L1	W1	H
192346	50 lb (25 kg)	12 x 18 in	12.50 in	18.50 in	5.25 in
192347	100 lb (50 kg)	12 x 18 in	12.50 in	18.50 in	5.25 in
191455	50 lb (25 kg)	18 x 18 in	18.75 in	18.75 in	5.25 in
191456	100 lb (50 kg)	18 x 18 in	18.75 in	18.75 in	5.25 in
191457	150 lb (75 kg)	18 x 18 in	18.75 in	18.75 in	5.25 in
191458	200 lb (100 kg)	18 x 18 in	18.75 in	18.75 in	5.25 in
191459	250 lb (125 kg)	18 x 18 in	18.75 in	18.75 in	5.25 in
191460	300 lb (150 kg)	18 x 18 in	18.75 in	18.75 in	5.25 in
191461	500 lb (250 kg)	18 x 18 in	18.75 in	18.75 in	5.25 in
191462	1,000 lb (500 kg)	18 x 18 in	18.75 in	18.75 in	5.25 in
191467	50 lb (25 kg)	18 x 24 in	18.75 in	24.75 in	5.25 in
191469	100 lb (50 kg)	18 x 24 in	18.75 in	24.75 in	5.25 in
191470	150 lb (75 kg)	18 x 24 in	18.75 in	24.75 in	5.25 in
191472	200 lb (100 kg)	18 x 24 in	18.75 in	24.75 in	5.25 in
191473	250 lb (125 kg)	18 x 24 in	18.75 in	24.75 in	5.25 in
191474	300 lb (150 kg)	18 x 24 in	18.75 in	24.75 in	5.25 in
191475	500 lb (250 kg)	18 x 24 in	18.75 in	24.75 in	5.25 in
191476	1,000 lb (500 kg)	18 x 24 in	18.75 in	24.75 in	5.25 in
191479	100 lb (50 kg)	24 x 24 in	24.75 in	24.75 in	5.25 in
191480	150 lb (75 kg)	24 x 24 in	24.75 in	24.75 in	5.25 in
191481	200 lb (100 kg)	24 x 24 in	24.75 in	24.75 in	5.25 in
191482	250 lb (125 kg)	24 x 24 in	24.75 in	24.75 in	5.25 in
191483	300 lb (150 kg)	24 x 24 in	24.75 in	24.75 in	5.25 in
191485	500 lb (250 kg)	24 x 24 in	24.75 in	24.75 in	5.25 in
191486	1,000 lb (500 kg)	24 x 24 in	24.75 in	24.75 in	5.25 in



# BenchMark® SL

Light-capacity Bench Scales



## Specifications

### Load Cell, NTEP Certified:

IP66 aluminum and environmentally sealed

### Output Impedance:

350  $\Omega$

### Maximum Overload:

200%

### Overload Protection:

Shock-absorbing spider

### Cable Length:

10 ft (3 m)

### Compensated Temperature Range:

14° F to 104° F (-10° C to 40° C)

### Warranty:

Two-year limited warranty

### Approvals:

NTEP CC 95-072, Class III 5,000 d

Measurement Canada AM-5082, Class III 5,000 d

Load cell is cFMus approved

## Standard Features

- 304 stainless steel construction
- LifeGuard™ base design isolates load cell from overloads and shock loads for added durability
- Specially designed adjustable support feet provide exceptional traction and won't scratch surfaces
- NTEP Certified IP66 aluminum load cell

## APPROVALS

