



185 CFM AIR COMPRESSOR

**MQ Power reliability  
in an air compressor**





# 185 CFM AIR COMPRESSOR

Isuzu Tier 4 Final diesel engine — proven, rugged and reliable.

- **Quiet operation** — sound attenuated, weather resistant housing reduces noise to 69dB(A) (at 23 at full load)
- **Easy access to engine and air compressor** through large lockable gull wing side doors
- **Spacious, lockable internal tool box** for storage of tools and hoses
- **Heavy gauge steel fenders** for long life and durability
- **Heavy duty "A" frame** with three-position coupler height and tongue-mounted swivel jack with 6" caster wheel
- **Easy maintenance** with external drains
- **Electrocoating (e-coat) along with powder coating and stainless steel hardware** ensures weather protection and superior appearance for years
- **Heavy duty axle, leaf spring suspension, and 14" tires** provide smooth transportation



**DIS185SSI4F**  
185 CFM • 100 psi



The **LED Digital Controller** monitors compressor and engine statistics:

- **Compressor and engine temperature**
- **Air pressure**
- **Fuel level**
- **Complete engine diagnostic tools**
- **Hour meter**

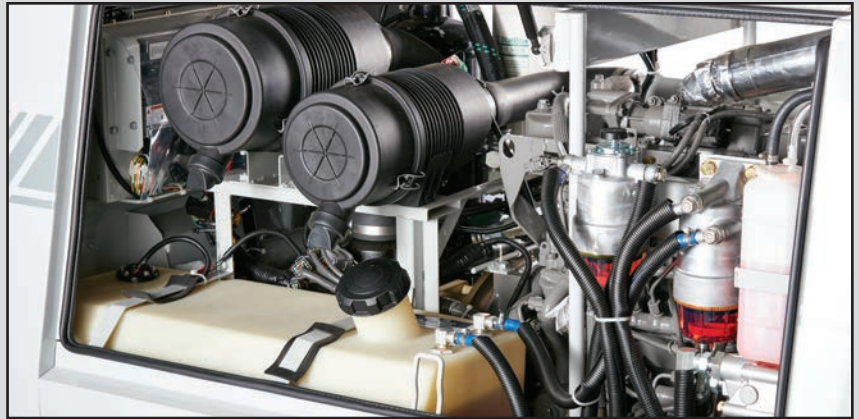


**Lockable internal tool box** with spacious room for multiple tools and hoses

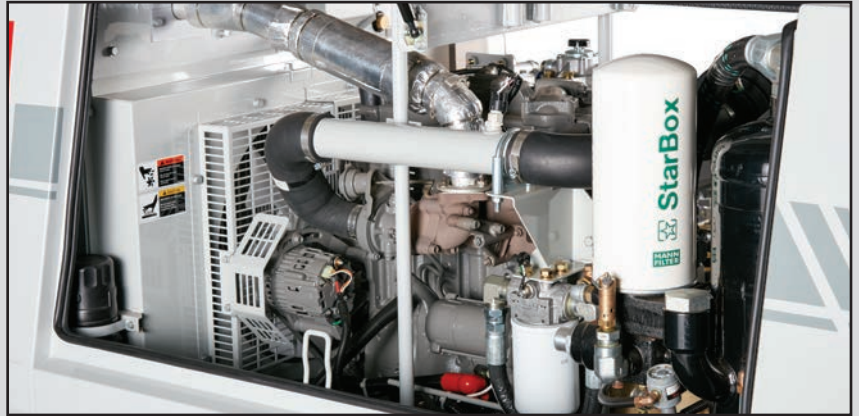


**Two 3/4" NPT** air service connections

- **Isuzu engine**, 49 HP, 4-cycle direct injection, turbocharged, Tier 4 final
- **Compressor air end** by Ingersoll Rand
- **22 gallon polyethylene fuel tank**
- **Two-stage air filters** for engine and compressor
- **Two-stage fuel filtration** with manual primer



- **E-coat air tank** prevents common rust problems due to condensation, extending the life of the air compressor
- **Large side doors with gas struts** provide easy access to engine and compressor



- **E-coat and powder coating** processes produce a complete and uniform protective coating to greatly reduce rust and corrosion



Shown with optional  
Hose Reels





# Specifications — DIS185SSI4F




## Air Compressor Specifications

Type	Rotary Screw
Compressor Air End	Ingersoll Rand
Rated Delivery	185 CFM (5.2 m <sup>3</sup> min)
Rated Operating Pressure	100 psi (6.9 Bar)
Maximum Operation Pressure	105 psi (7.2 Bar)
Oil Capacity	4.5 gallons (17 liters)
Air Service Connections	Two ¾" NPT
Cooling System	Oil Cooler
Air Cleaner (Air Compressor)	2-Stage Filter
Sound Level at Full Load at 23 Feet	69 dB(A)

## Fuel System

Recommended Fuel	ASTM-D975-No. 1 & No. 2-D	
Fuel Tank Capacity	22 gallons (83 Liters)	
Fuel Consumption	gph	lph
Full load	2.52	9.5
½ load	1.36	5.1

## Options

2" Ball Coupler — 10,000 lbs. (4536 kg) #EE43254	
2-5/16" Ball Coupler — 14,000 lbs. (6350 kg) #EE43253	
3" Pintle Eye — 20,000 lbs. (9072 kg) #EE36264	
<b>Cold Weather Block Heater (500 watts):</b> MQPHEATKIT-A/C185	
<b>Hose Reels: Single — MQPSINGLEREEL50;</b> <b>Double — MDPDUALREEL50</b>	

† Engine power ratings are calculated by the individual engine manufacturer and the rating method may vary among engine manufacturers. Multiquip Inc. and its subsidiary companies makes no claim, representation or warranty as to the power rating of the engine on this equipment and disclaims any responsibility or liability of any kind whatsoever with respect to the accuracy of the engine power rating. Users are advised to consult the engine manufacturer's owners manual and its website for specific information regarding the engine power rating.

## Engine Specifications

Make / Model	Isuzu / 4LE2T
Emissions	Tier 4 Final Certified
Starting System	Electric
Design	4-cycle, Water Cooled, Direct Injection, Turbocharged
Displacement	133.0 in <sup>3</sup> (2179 cc)
Gross Engine Power Output	49 HP†
Engine Speed (RPM)	2400
Idle Speed (RPM)	1350
Oil Capacity	2.7 gallons (10.2 Liters)
Coolant Capacity	1.8 gallons (6.8 Liters)
Air Cleaner (Engine)	2-Stage Filter
Battery	12V, Group 27, CCA 800

## Trailer Specifications

Gross Axle Weight Rating (GAWR)	3500 lbs. (1588 kg)
Tire Size	ST205/75D14 LR-C
Tow Bar Design	Bolt on "A" Frame
Jack Stand Type	6" caster wheel

## Weight and Dimensions

Dry Weight	2112 lbs. (960 kg)
Wet Weight	2343 lbs. (1065 kg)
Dimensions	128.5" x 65.6" x 60.1" (326.4 x 166.6 x 152.7cm)

### WARRANTY\*

#### Isuzu Engine\*\*

12 months from date of purchase with unlimited hours or 60 months from date of purchase with 5000 hours (whichever comes first).

#### Air End

36 months from date of purchase or 3000 hours (whichever occurs first).

#### Air Compressor

12 months from date of purchase with unlimited hours.

\* Refer to express written, one-year limited warranty sheet for additional information.

\*\* Refer to Isuzu Diesel Engines Limited Warranty for details.

Your Multiquip dealer is:

Connect with us on

