

Risers and Connectors

3/8" Riser Lengths

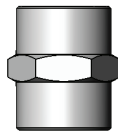
3/8" NPT male both ends



Model No.	Length	Model No.	Length
000357-40	2" (51 mm)	000369-40	18" (457 mm)
000358-40	3" (76 mm)	000372-40	24" (610 mm)
000361-40	5" (127 mm)	000376-40	32" (813 mm)
000363-40	7" (178 mm)	Contact factory for sizes not shown.	

Couplings

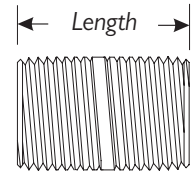
- Used to connect two (2) pipes
- Same thread size on both ends
- Chrome plated brass



Model No.	Dimension	Length
001769-40	3/8" NPT	1-1/8" (29 mm)
001684-25	1/2" NPT	1-5/16" (33 mm)
004710-25	3/4" NPT	1-7/16" (37 mm)

Close Nipples

- Same male thread size on both ends
- Close nipple will be completely concealed



Model No.	Dimension	Length
002535-25	3/8" NPT	1" (25 mm)
002534-25	1/2" NPT	1-1/8" (29 mm)
004741-25	3/4" NPT	1-3/8" (35 mm)

Check Valves

- Rough brass finish
- Designed for water use only
- For horizontal or vertical use



B-CVH1-2	1/2" NPT female connections	2-3/8" length
B-CVH3-4	3/4" NPT female connections	2-7/8" length
B-CVH3-8	3/8" NPT female connections	2-5/16" length

Conversion Adapters

B-0412 Adapter

- Rigid to swivel adapter
- Use for field conversion where a faucet with 3/8" NPT outlet is installed and a swivel gooseneck or nozzle is required



B-0412-M Master Box (2)

B-0413 Adapter

- Swivel to rigid adapter
- Used for field conversion where a faucet with swivel outlet is installed and a 3/8" rigid gooseneck is required



B-0413-M Master Box (2)
B-0413-M50 Master Box (50)

B-0414 Adapter

- Gooseneck coupling
- Converts 3/8" rigid gooseneck to swivel on a 3/8" NPT female outlet faucet



B-0414-M Master Box (2)

EZ-SWIVEL-CZ Swivel Adapter

- Swivel adapter for Chicago and Zurn faucets



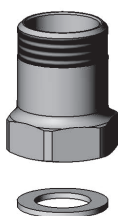
EZ-SWIVEL-FM Swivel Adapter

- Swivel adapter for Fisher faucets



B-0411-FXX Swivel to Swivel Adapter

- Swivel to swivel adapter with flow tower
- Includes washer
- Refer to *Flow Tower Chart*, at right, to specify flow desired and add numbers to model suffix
- Use for field conversion where a faucet with a standard swivel outlet requires a swivel flow control outlet
- For use on lavatory faucets to conserve water



B-0411-FXX Flow Tower Chart

Model No.	Flow (GPM)	Flow Tower Color
B-0411-F10	0.90	Grey
B-0411-F12	1.20	Pink
B-0411-F15	1.40	Green