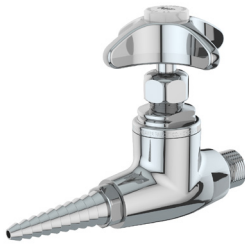


L2870

Fine Control Needle Valve,
Straight Pattern



Application: Precise flow regulation of laboratory gases. Ideal for special gases such as nitrogen, oxygen, helium and hydrogen. Valve is specially cleaned, lubricated and packaged for use with high purity gases.

Valve Body: Straight pattern forged brass.

Valve Unit: Floating tapered stainless steel needle and replaceable stainless steel seat.

Handle: Forged brass four-arm handle with color-coded index disc.

Inlet: 3/8" NPT male inlet.

Outlet: 3/8" NPT female outlet with removable ten serration hose end.

Quality Assurance: Valve is fully assembled and factory tested prior to shipment.

Additional Models

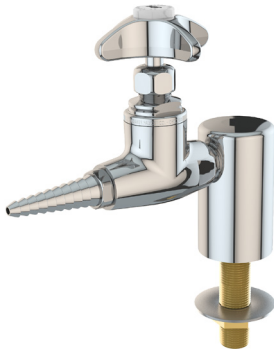
L2872: Fine control needle valve with angle serrated hose end

L2873: Fine control needle valve with quick connect fitting.

L2874: Fine control needle valve with 1/4" OD compression fitting.

L2870-131WSA

Fine Control Needle Valve,
Deck Mounted



Mounting: Deck mounted turret base with single outlet.

Valve Body: Straight pattern forged brass.

Valve Unit: Floating tapered stainless steel needle and replaceable stainless steel seat.

Handle: Forged brass four-arm handle with color-coded index disc.

Inlet: Furnished with 3/8" IPS mounting shank (assembled), locknut and washer. 3/8" NPT male inlet.

Outlet: 3/8" NPT female outlet with removable ten serration hose end.

Cleaning: Fixture is specially cleaned, lubricated, assembled and packaged for use with high purity gases, including oxygen.

Quality Assurance: Fixture is fully assembled and factory tested prior to shipment.

Additional Models

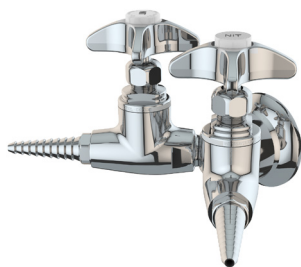
L2870-132AWSA: Same as above except with two valves at 90 degrees.

L2870-132SWSA: Same as above except with two valves at 180 degrees.

L2870-134WSA: Same as above except with four valves.

L2870-141FT

Double Fine Control Needle Valve,
Wall Mounted



Mounting: For installation on vertical surfaces (such as drywall) where there is no access behind wall during installation.

Valve Bodies: Straight pattern forged brass.

Valve Units: Floating tapered stainless steel needle and replaceable stainless steel seat.

Handles: Forged brass four-arm handles with color-coded index discs.

Inlet: 3/8" NPT female inlet with adjustable escutcheon.

Outlets: 3/8" NPT female outlets with removable ten serration hose ends.

Cleaning: Fixture is specially cleaned, lubricated, assembled and packaged for use with high purity gases, including oxygen.

Quality Assurance: Fixture is fully assembled and factory tested prior to shipment.

L2870-141WSA

Double Fine Control Needle Valve,
Panel/Overhead Mounted



Mounting: For installation on vertical or horizontal surfaces (such as pipe chases and service carriers) where there is access behind surface during installation.

Valve Bodies: Straight pattern forged brass.

Valve Units: Floating tapered stainless steel needle and replaceable stainless steel seat.

Handles: Forged brass four-arm handles with color-coded index discs.

Inlet: Furnished with 3/8" IPS mounting shank (assembled), locknut and washer. 3/8" NPT male inlet.

Outlets: 3/8" NPT female outlets with removable ten serration hose ends.

Cleaning: Fixture is specially cleaned, lubricated, assembled and packaged for use with high purity gases, including oxygen.

Quality Assurance: Fixture is fully assembled and factory tested prior to shipment.