

- BTVR1611WSA** Mixer Tap, Bench Mounted, Vandal-Resistant Construction
- BTVR1614WSA** Mixer Tap, Bench Mounted, Rigid/Swing Gooseneck, Vandal-Resistant Construction



Application: Laboratory water mixer tap for hot and cold water. Tap has heavy duty construction to withstand bending, breakage and disassembly. All threaded connections are secured with cement.

Mounting: Bench or countertop mounted.

Body: Cast brass.

Headworks: WaterSaver self-contained compression valve cartridges with replaceable stainless steel seats. Packing nuts are secured with set screws to prevent removal.

Handles: Molded nylon hooded style handles with index discs. Handles and indexes are color coded and marked per EN 13792. Index discs are cemented in place.

Gooseneck: 150mm (6") rigid gooseneck. Gooseneck riser is 1/2" IPS heavy wall pipe to resist bending and breakage.

Inlets: (2) G1/2 male inlets on 180mm center dimension. Furnished with G1/2 mounting shanks, locknuts and washers.

Outlet: G3/8 female outlet with removable anti-splash serrated hose end. Hose end has internal check valve to prevent backflow. Hose end is secured with set screw to prevent removal.

Quality Assurance: Fitting is fully assembled and factory tested prior to shipment. 10 bar (150 PSI) test pressure and maximum working pressure.

Ordering Information

Options		BTVR1611WSA	BTVR1614WSA
Valve Construction	Compression valve cartridges	<input type="checkbox"/> BTVR1611WSA	<input type="checkbox"/> BTVR1614WSA
	Ceramic disc valve cartridges	<input type="checkbox"/> BTVRC1611WSA	<input type="checkbox"/> BTVRC1614WSA
Gooseneck	200mm (8") gooseneck in place of 150mm (6")	<input type="checkbox"/> BTVR1611-8WSA	<input type="checkbox"/> BTVR1614-8WSA
Outlet Fitting	BO055VR aerator in place of hose end	<input type="checkbox"/> BTVR1611-55WSA	<input type="checkbox"/> BTVR1614-55WSA
	BT118 pipe interrupter fitting with hose end	<input type="checkbox"/> BTVR1611-118WSA	<input type="checkbox"/> BTVR1614-118WSA

Product Finish

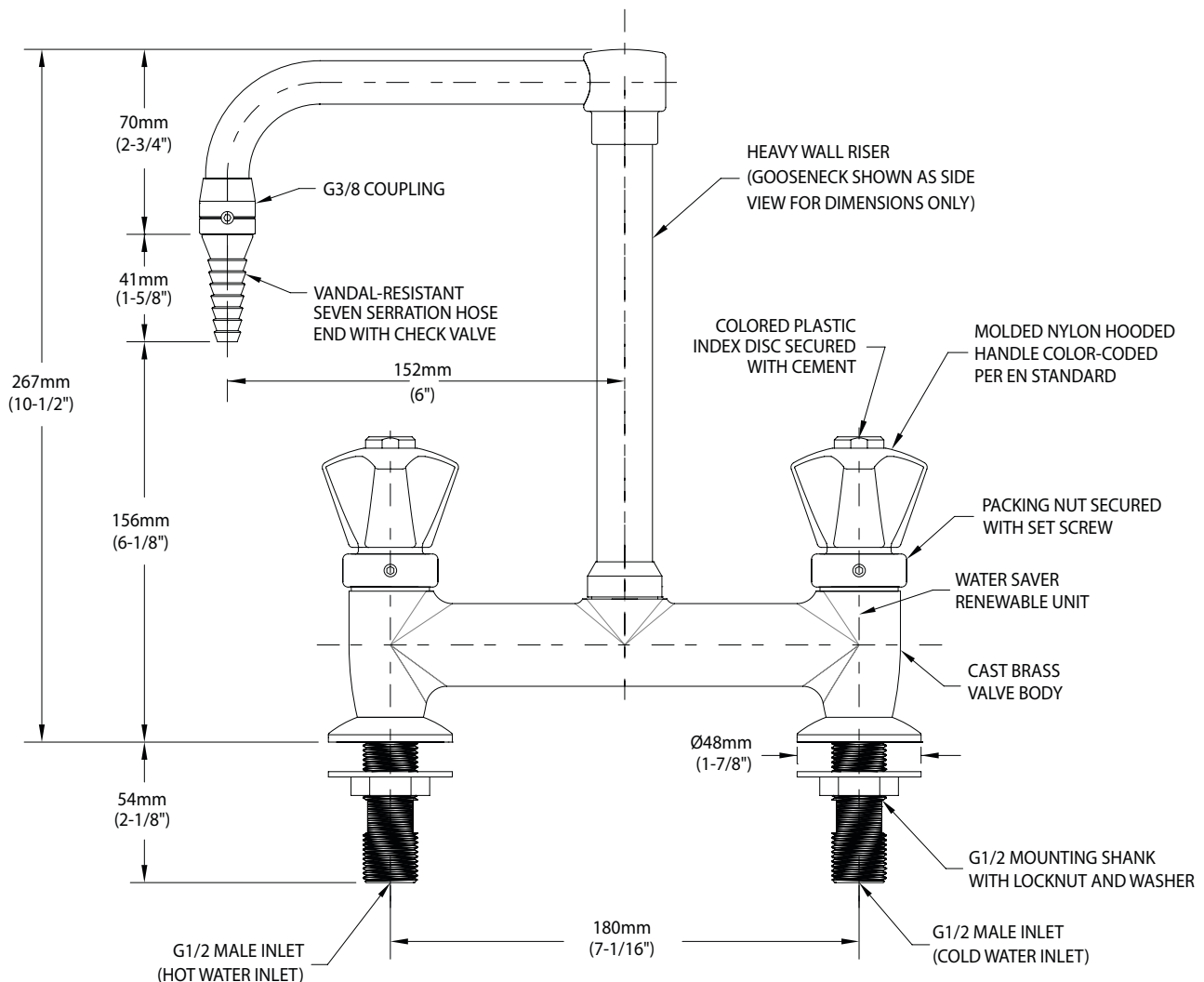
<input type="checkbox"/> WHT	Gloss white powder coated finish	<input type="checkbox"/> PCL	Polished chrome plated finish with clear epoxy coating
<input type="checkbox"/> GRY	Gloss light gray powder coated finish	<input type="checkbox"/> SCC	Satin chrome plated finish with clear epoxy coating
<input type="checkbox"/> GRD	Gloss dark gray powder coated finish	<input type="checkbox"/> SNC	Satin nickel plated finish with clear epoxy coating
<input type="checkbox"/> STM	Starburst metallic powder coated finish		

Note: Refer to "Product Finishes" catalog for complete information on finishes.

Media

BTVR1611WSA Mixer Tap, Bench Mounted, Vandal-Resistant Construction

BTVR1614WSA Mixer Tap, Bench Mounted, Rigid/Swing Gooseneck, Vandal-Resistant Construction



NOTES:

1. FITTING IS FULLY ASSEMBLED AND FACTORY TESTED PRIOR TO SHIPMENT.
2. MAXIMUM WORKING PRESSURE IS 10 BAR (150 PSI).
3. ALL CONNECTIONS ARE SECURED WITH SET SCREWS OR CEMENT.

Rev. 122818

THIS SPACE FOR ARCHITECT/ENGINEER APPROVAL

Due to continuing product improvement, the information contained in this document is subject to change without notice. All dimensions are $\pm 6\text{mm}$ (1/4"). Rev. 082118