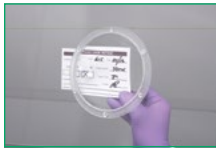


ALLERGARD^{ES}

NU-620 CONTAINMENT ANIMAL TRANSFER STATION

The Allergard NU-620 Animal Transfer Stations provides animal sterility and allergen protection through the use of vertical HEPA-filtered airflow on the work surface and an air barrier at the cabinet's opening(s) minimizing exposure to animal hair/dander as well as cage bedding material.

Popular Features and Accessories



Magnifying Glass



Folding Shelf



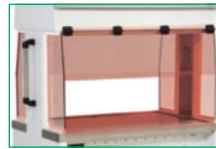
Cage Top Holder



Feed Hopper



Hand Sanitizer



Red Light



Single Sided Cabinet

Designed after a Class II Biosafety Cabinet, Model NU-620 as a single sided cabinet creates a dynamic air barrier of 75 fpm (0.38 m/s) at the front of the cabinet. An airfoil pulls air using vacuum slots to capture contaminants before they exit the work zone (technician protection) or enter the work zone (animal protection).

Double Sided Cabinet

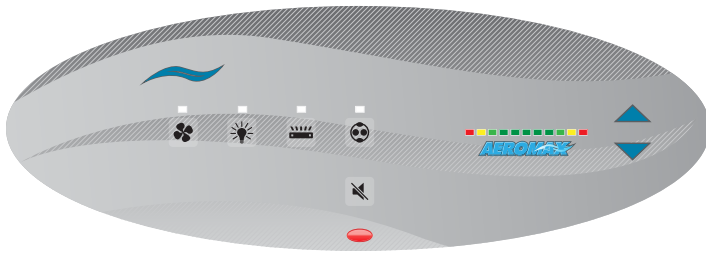
As a double sided unit, Model NU-620 offers the flexibility to work from either side of the cabinet or with two technicians. Improved allergen protection is created by an air barrier of 25 fpm (0.13 m/s) at both access opening of the cabinet.

true laminar

Animal protection is created by laminar down flow HEPA filtered air over the work surface at 60 fpm (0.30 m/s).



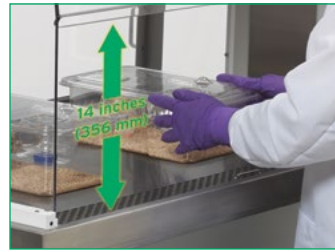
AeroMax Electronic Control System



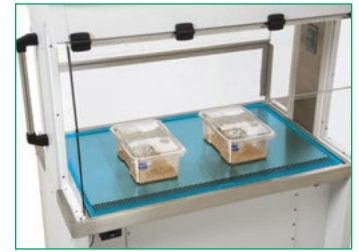
Safely perform your work and maintain animal sterility by displaying and monitoring airflow system performance via PressureFlow™, a specialized digital pressure transducer.

- Automatic filter load compensation maintains proper airflow
- Warm-up mode
- Password Protection
- Alarm Ring Back Function
- Software updates via USB
- Software / hardware watchdog - automatically reset upon failure to last known status or to blower "ON" to assure containment.

Ergonomically Designed



A Large 14" (356 mm) Access Opening makes it easy to add and remove the largest cages while providing your arms an extended range of motion.



A Spacious Work Zone offers more room to work with cages and allows for the additional placement of work flow items such as feed, water bottles, and more.



A large 12 inch (305 mm) slanted view screen provides an unrestricted view of the work zone allowing the technician to adequately and safely do their job.



Model NU-620 provides the ability to Sit or Stand at a Range of Heights through an automatic lift system offering 12-inches (305 mm) adjustable height.

Model	Access Opening(s)	Exterior Dims W x D	Exterior Min Height 6" / 4" Casters	Exterior Max Height 6" / 4" Casters	Worktray Dims W x D	Work Surface Min Height 6" / 4" Casters	Work Surface Max Height 6" / 4" Casters	Electrical	Net Weight
NU-620-300	2	42 x 30 in	82 ¾ / 80 ½ in	97 ¾ / 95 ½	36 ¾ x 28 ¼ in	37 ¾ / 35 ½ in	49 ¾ / 47 ½ in		430 lbs 195 kg
NU-620-301	1	(1067 x 762 mm)	(2092 / 2045 mm)	(2473 / 2426 mm)	(930 x 718 mm)	(949 / 902 mm)	(1254 / 1207 mm)		
NU-620-400	2	48 x 30 in	82 ¾ / 80 ½ in	97 ¾ / 95 ½	45 ¾ / 28 ¼ in	37 ¾ / 35 ½ in	49 ¾ / 47 ½ in	All Models 115V E: 230V	460 lbs 209 kg
NU-620-401	1	(1219 x 762 mm)	(2092 / 2045 mm)	(2473 / 2426 mm)	(1083 x 718 mm)	(949 / 902 mm)	(1254 / 1207 mm)		
NU-620-500	2	60 x 30 in	82 ¾ / 80 ½ in	97 ¾ / 95 ½	54 ¾ / 28 ¼ in	37 ¾ / 35 ½ in	49 ¾ / 47 ½ in		530 lbs 240 kg
NU-620-501	1	(1524 x 762 mm)	(2092 / 2045 mm)	(2473 / 2426 mm)	(1387 x 718 mm)	(949 / 902 mm)	(1254 / 1207 mm)		

*Specify model with appropriate letter suffix for electrical specifications. *NU-620-301E for 230V.

Standard Features

AeroMax Electronic Control System
 Ultra High Efficiency DC/ECM Motor
 Ultra High Efficiency EC Impeller
 AttenuMont Vibration Control System
 Motor Speed Controller
 3-inch (76 mm) Metal Frame Supply
 HEPA Filter 99.99% @ 0.3 microns
 3-inch (76 mm) Metal Frame Exhaust
 HEPA Filter 99.99% @ 0.3 microns
 Washable/reusable exhaust pre-filter
 Washable/reusable supply per-filter
 Metal Diffuser Over Supply Filter
 14" (356 mm) Hinged Window Sash
 Access Opening

LED Lighting
 Light Timer
 4" (102 mm) Castors w/ Brakes
 Two (2) Push/Pull Bars
 Removable Prop Up Work Tray
 Spill Trough with Waste Chute
 One (1) Duplex Outlet Right Side Wall
 Removable Work Tray
 12 ft [2.5 m] Power Cord

Optional Features

Disposable exhaust per-filter
 Disposable supply per-filter
 6" (152 mm) Castors w/ Brakes

Feed Hopper (Left, Right, Dual)
 Magnifying Glass Window
 Stainless Steel Folding Shelf
 Hand Sanitizer
 Ergo-tron Arm for Computer
 Duplex Outlets
 GFI Duplex Outlets
 Red Light

Warranty

3 Year Parts and Labor (US & CA)
 4 Year Parts (International)



Your Local NuAire Partner

Disclaimer: Model NU-620 should not be used as a substitute for a Class II, Type A2 Biological Safety Cabinet. The NU-620 is not a containment device for airborne particulate in low to moderate risk-hazard

