

- BT2920-1BM** Single Lift/Turn Gas Valve, Bench Mounted
- BT2920-2A-BM** Double Lift/Turn Gas Valve, 90°, Bench Mounted
- BT2920-2S-BM** Double Lift/Turn Gas Valve, 180°, Bench Mounted
- BT2920-4M** Four-Way Lift/Turn Gas Valve, Bench Mounted



BT2920-2A-BM

Application: Flow control of burning or combustible gases such as natural gas, propane and bottled gas. Fitting is designed as an alternative to the “drop lever” valves used for low pressure gas applications in the United Kingdom and other markets.

Mounting: Turret base with locator pins.

Valve Bodies: Straight pattern forged brass.

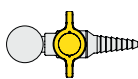
Headworks: Quarter-turn ball valve construction with chrome plated brass balls and molded PTFE seals. Valves lock in closed position.

Handle: Spring-loaded molded nylon handles. Handles lock in closed position. Handles must be pulled up to unlock and turned to open valves. Handle alignment indicates if valves are open or closed. Handles are color coded and marked per EN 13792.

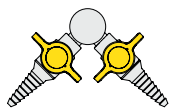
Inlet: Furnished with G1/4 mounting shank, locknut and washer. G1/4 male inlet.

Outlet: Integral (nonremovable) serrated hose end.

Quality Assurance: Fitting is fully assembled and factory tested prior to shipment. 8.5 bar (125 PSI) test pressure and 5 bar (75 PSI) maximum working pressure.



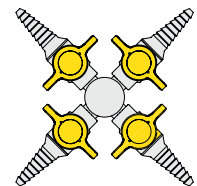
Single Valve
BT2920-1BM



Two Valves at 90°
BT2920-2A-BM



Two Valves at 180°
BT2920-2S-BM



Four Valves
BT2920-4BM

Ordering Information

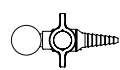
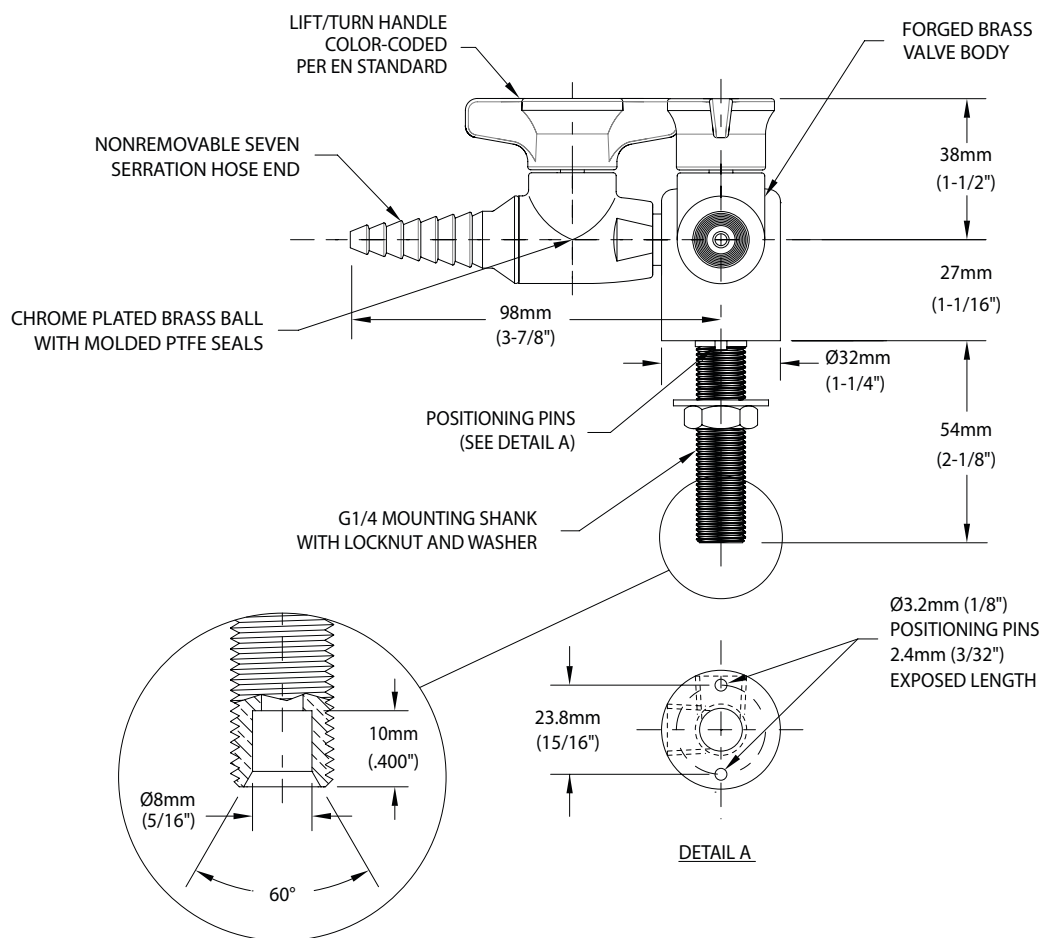
Product Finish

- WHT Gloss white powder coated finish
- GRY Gloss light gray powder coated finish
- GRD Gloss dark gray powder coated finish
- STM Starburst metallic powder coated finish

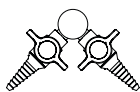
Note: Refer to "Product Finishes" catalog for complete information on finishes.

Media

- BT2920-1BM** Single Lift/Turn Gas Valve, Bench Mounted
- BT2920-2A-BM** Double Lift/Turn Gas Valve, 90°, Bench Mounted
- BT2920-2S-BM** Double Lift/Turn Gas Valve, 180°, Bench Mounted
- BT2920-4M** Four Way Lift/Turn Gas Valve, Bench Mounted



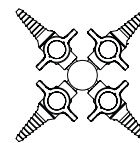
SINGLE VALVE:
BT2920-1BM



TWO VALVES AT 90°:
BT2920-2A-BM



TWO VALVES AT 180°:
BT2920-2S-BM



FOUR VALVES:
BT2920-4BM

NOTES:

- FITTING IS FACTORY ASSEMBLED AND TESTED AT 8.5 BAR (125 PSI). MAXIMUM WORKING PRESSURE IS 5 BAR (75 PSI).

Rev. 122818

THIS SPACE FOR ARCHITECT/ENGINEER APPROVAL

Due to continuing product improvement, the information contained in this document is subject to change without notice. All dimensions are ± 6mm (1/4"). Rev. 080318