



**M12 FUEL**  
**1/4" Right Angle Die Grinder Kit**

2485-22 (2485-20 Tool-Only)

**Specifications:**

Power Output	0.3 HP
RPM	0 – 24,500
Collet Size	1/4"
Accessory Size	2"
Height / Length	8.7" / 4.5"
Weight	1.7 lbs

**Includes:** (2) M12™ REDLITHIUM™ CP2.0 Battery Packs,

(2) Wrenches, Charger, Carrying Case

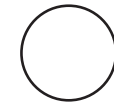
**Related Accessories:**

49-16-2485 M12 FUEL™ 1/4" Right Angle Die Grinder Rubber Boot;

48-07-2486 1/4" Cut-Off Wheel Arbor;

48-66-2486 1/8" Collet & Nut Kit;

49-94-2000 2" Metal Cut-Off Wheel



**M12 FUEL**  
**1/2" Digital Torque Wrench w/ ONE-KEY™ Kit**

2466-22 (2466-20 Tool-Only)

**Specifications:**

Torque Range	12.5 – 150 ft-lbs
RPM	0 – 100
Tool Accuracy	CW: +/-2% of Full Scale / CCW: +/-3% of Full Scale (Range: 20% – 100% of Full Scale)
Ratcheting Angle	4.5°
Anvil Size	1/2" Ball Detent
Measuring Units	ft-lbs, in-lbs, Nm, kg-cm
Length / Weight	23.5" / 5.7 lbs

**Includes:** (2) M12™ REDLITHIUM™ CP2.0 Battery Packs,

Certificate of Calibration, Charger, Carrying Case



**M12™ Spot Polisher Kit**

2438-22X, 2438-22 (2438-20 Tool-Only)

**Specifications:**

Polishing RPM	0 – 2,800
Sanding RPM	0 – 8,300
Length / Weight	5.1" / 2.4 lbs

**Includes:** 2438-22X (1) M12™ REDLITHIUM™ XC3.0 Battery Pack, (1) M12™ REDLITHIUM™ CP1.5 Battery Pack;

2438-22 (2) M12™ REDLITHIUM™ CP1.5 Battery Packs;

**All Kits Include:** 5 Pc Accessory Pack, Side Handle, Charger, Soft Carrying Case



**M12™ Palm Nailer Kit**

2458-21 (2458-20 Tool-Only)

**Specifications:**

Impact Energy	2.2 ft-lbs (3.0 J)
BPM	0 – 2,700
Collet Capacity	6D – 16D
Head Profile	3/4"
Magnetic Tip	Yes
Weight	3.4 lbs

**Includes:** (1) M12™ REDLITHIUM™ CP1.5 Battery Pack, Hand Strap, Charger, Soft Carrying Case



**M12 FUEL**  
**1/4" Straight Die Grinder Kit**

2486-22 (2486-20 Tool-Only)

**Specifications:**

Power Output	0.3 HP
RPM	0 – 21,000
Collet Size	1/4"
Accessory Size	2"
Height / Length	2" / 11"
Weight	1.6 lbs

**Includes:** (2) M12™ REDLITHIUM™ CP2.0 Battery Packs,

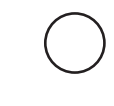
(2) Wrenches, Charger, Carrying Case

**Related Accessories:**

48-07-2486 1/4" Cut-Off Wheel Arbor;

48-66-2486 1/8" Collet & Nut Kit;

49-94-2000 2" Metal Cut-Off Wheel



**M12 FUEL**  
**3/8" Digital Torque Wrench w/ ONE-KEY™ Kit**

2465-22 (2465-20 Tool-Only)

**Specifications:**

Torque Range	10 – 100 ft-lbs
RPM	0 – 100
Tool Accuracy	CW: +/-2% of Full Scale / CCW: +/-3% of Full Scale (Range: 20% – 100% of Full Scale)
Ratcheting Angle	4.5°
Anvil Size	3/8" Ball Detent
Measuring Units	ft-lbs, in-lbs, Nm, kg-cm
Length / Weight	23.3" / 5.5 lbs

**Includes:** (2) M12™ REDLITHIUM™ CP2.0 Battery Packs,

Certificate of Calibration, Charger, Carrying Case



**M12 FUEL**  
**5-3/8" Circular Saw Kit**

2530-21XC (2530-20 Tool-Only)

**Specifications:**

RPM	3,600
Bevel Capacity	50°
Cut Capacity	1-5/8" at 90°; 1-1/8" at 45°
Arbor	10 mm
Blade Guards	Aluminum
Weight	6.2 lbs

**Includes:** (1) M12™ REDLITHIUM™ XC4.0 Battery Pack,

Circular Saw Blade, Wrench, Charger, Contractor Bag



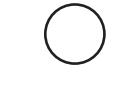
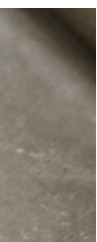
**M12™ 23 Gauge Pin Nailer**

2540-21 (2540-20 Tool-Only)

**Specifications:**

Nail Diameter	23 Gauge
Nail Size	1/2" – 1-3/8"
Magazine Size	120 Nails
Magazine Loading	Side Load
Firing Modes	Sequential
Length / Weight	8.7" / 3.8 lbs

**Includes:** (1) M12™ REDLITHIUM™ CP1.5 Battery Pack, Reversible Belt Clip, Jam Clearing Guide, Hex Wrench, Secondary Tip, Charger, Contractor Bag



**Includes:** (2) M12™ REDLITHIUM™ CP2.0 Battery Packs,

Certificate of Calibration, Charger, Carrying Case



**M12 FUEL**  
**HACKZALL® One-Handed Reciprocating Saw Kit**

2520-21XC (2520-20 Tool-Only)

**Specifications:**

SPM	0 – 3,000
Stroke Length	5/8"
Keyless	QUIK-LOK™
Blade Clamp	(Accepts all SAWZALL® Blades)
Length / Weight	13.3" / 4.1 lbs

**Includes:** (1) M12™ REDLITHIUM™ XC4.0 Battery Pack,

HACKZALL® Blade, Charger, Contractor Bag



**M12™ HACKZALL® One-Handed Reciprocating Saw Kit**

2420-22, 2420-21 (2420-20 Tool-Only)

**Specifications:**

SPM	0 – 3,000
Stroke Length	1/2"
Keyless	QUIK-LOK™
Blade Clamp	(Accepts all SAWZALL® Blades)
Length / Weight	11.0" / 2.6 lbs

**Includes:** 2420-22 (2) M12™ REDLITHIUM™ CP1.5 Battery Packs;

2420-21 (1) M12™ REDLITHIUM™ CP1.5 Battery Pack;

**All Kits Include:** (2) HACKZALL® Blades, Charger, Contractor Bag



**M12™ 3/8" Crown Stapler Kit**

2447-21 (2447-20 Tool-Only)

**Specifications:**

Staple Crown Size	3/8" Flat Crown
Staple Length	1/4" – 9/16"
Staple Type	T-50
Length / Weight	7.3" / 3.0 lbs

**Includes:** (1) M12™ REDLITHIUM™ CP1.5 Battery Pack, Charger, Contractor Bag



**M12™ High Performance Jig Saw Kit**

2445-21 (2445-20 Tool-Only)

**Specifications:**

SPM	0 – 2,800
Stroke Length	3/4"
Bevel Capacity	45° (Positive Locks at 90° and 45°)
Blade Clamp	QUIK-LOK™ T-Shank
Length / Weight	8.8" / 4.2 lbs

**Includes:** (1) M12™ REDLITHIUM™ CP1.5 Battery Pack,

10 TPI Wood Cutting T-Shank Jig Saw Blade, Anti-Splintering Insert,

Non-Marring Shoe, Charger, Contractor Bag

