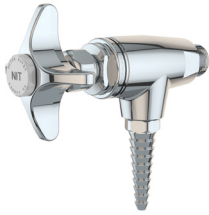


**L3170**

Fine Control Needle Valve,  
Angle Pattern



**Application:** Precise flow regulation of laboratory gases. Ideal for special gases such as nitrogen, oxygen, helium and hydrogen. Valve is specially cleaned, lubricated and packaged for use with high purity gases.

**Valve Body:** Angle pattern forged brass.

**Valve Unit:** Floating tapered stainless steel needle and replaceable stainless steel seat.

**Handle:** Forged brass four-arm handle with color-coded index disc.

**Inlet:** 3/8" NPT male inlet.

**Outlet:** 3/8" NPT female outlet with removable ten serration hose end.

**Quality Assurance:** Valve is fully assembled and factory tested prior to shipment.

**Additional Models**

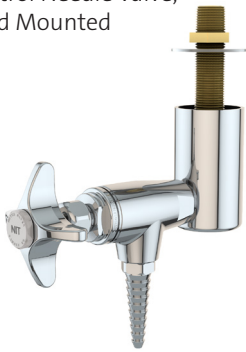
**L3172:** Fine control needle valve with angle serrated hose end.

**L3173:** Fine control needle valve with quick connect fitting.

**L3174:** Fine control needle valve with 1/4" OD compression fitting.

**L3170-131WSA**

Fine Control Needle Valve,  
Overhead Mounted



**Mounting:** Turret base with single outlet for mounting underneath reagent shelf.

**Valve Body:** Angle pattern forged brass.

**Valve Unit:** Floating tapered stainless steel needle and replaceable stainless steel seat.

**Handle:** Forged brass four-arm handle with color-coded index disc.

**Inlet:** Furnished with 3/8" IPS mounting shank (assembled), locknut and washer. 3/8" NPT male inlet.

**Outlet:** 3/8" NPT female outlet with removable ten serration hose end.

**Cleaning:** Fixture is specially cleaned, lubricated, assembled and packaged for use with high purity gases, including oxygen.

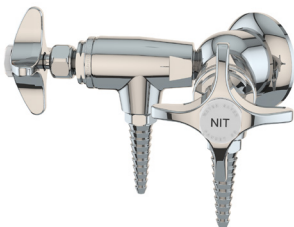
**Quality Assurance:** Fixture is fully assembled and factory tested prior to shipment.

**Additional Model**

**L3170-132SWSA:** Same as above except with two valves at 180 degrees.

**L3170-141FT**

Double Fine Control Needle Valve,  
Wall Mounted



**Mounting:** For installation on vertical surfaces (such as drywall) where there is no access behind wall during installation.

**Valve Bodies:** Angle pattern forged brass.

**Valve Units:** Floating tapered stainless steel needle and replaceable stainless steel seat.

**Handles:** Forged brass four-arm handles with color-coded index discs.

**Inlet:** 3/8" NPT female inlet with adjustable escutcheon.

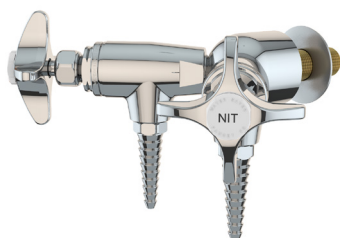
**Outlets:** 3/8" NPT female outlets with removable ten serration hose ends.

**Cleaning:** Fixture is specially cleaned, lubricated, assembled and packaged for use with high purity gases, including oxygen.

**Quality Assurance:** Fixture is fully assembled and factory tested prior to shipment.

**L3170-141WSA**

Double Fine Control Needle Valve,  
Panel/Overhead Mounted



**Mounting:** For installation on vertical or horizontal surfaces (such as pipe chases and service carriers) where there is access behind surface during installation.

**Valve Bodies:** Angle pattern forged brass.

**Valve Units:** Floating tapered stainless steel needle and replaceable stainless steel seat.

**Handles:** Forged brass four-arm handles with color-coded index discs.

**Inlet:** Furnished with 3/8" IPS mounting shank (assembled), locknut and washer. 3/8" NPT male inlet.

**Outlets:** 3/8" NPT female outlets with removable ten serration hose ends.

**Cleaning:** Fixture is specially cleaned, lubricated, assembled and packaged for use with high purity gases, including oxygen.

**Quality Assurance:** Fixture is fully assembled and factory tested prior to shipment.