

## Conversion Adapters

### B-0412-FXX Low Flow Adapter

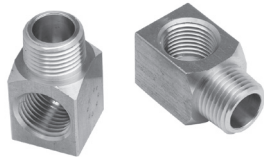
- Rigid to swivel adapter with flow tower
- Refer to *Flow Tower Chart*, at right, to specify flow desired and add numbers to model suffix
- Use for field conversion where a faucet with 3/8" NPT outlet is installed and a swivel gooseneck or nozzle is required
- For use on lavatory faucets to conserve water



B-0412-FXX Flow Tower Chart		
Model No.	Flow (GPM)	Flow Tower Color
B-0412-F10	1.00	Grey
B-0412-F12	1.20	Orange
B-0412-F15	1.40	Purple
B-0412-F20	2.00	Yellow
B-0412-F05	0.40	Brown

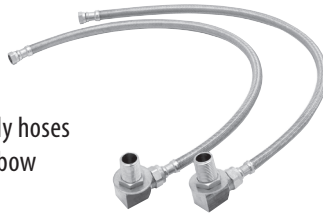
### B-1100-K Parts Kit

- Includes 2 each:  
1/2" NPT male x female short ELs



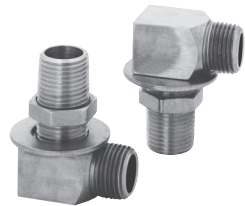
### B-0230-KIT Inlet Parts Kit

- Parts included:  
2 (017420-45) 24" flexible supply hoses  
2 (B-0230-K) 1/2" NPT male elbow installation kit



### B-0230-K 1/2" NPT Male Elbow Installation Kit

- Includes 2 each:  
1/2" NPT supply nipple, lock nut and washer  
1/2" NPT male x female short EL

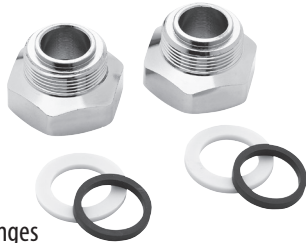


B-0230-K-M12 Master Pack of 12

## Inlet Adapters

### B-0466 Wall Mount Faucet Adapter For T&S Faucet To Chicago/Zurn Inlets

- Parts included:  
(2) Faucet adapters  
(1) santoprene seal per adapter  
(1) nitrile or EPDM seal per adapter
- 1-3/8" (35 mm) hex nut with internal threads to fit T&S body
- Threads fit Chicago and Zurn inlet flanges



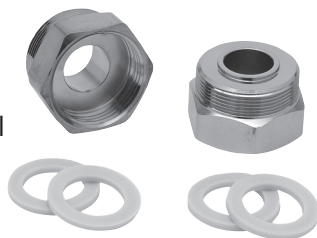
### B-0467 Wall Mount Faucet Adapter For T&S Faucet To Fisher Inlets

- Parts included:  
(2) Faucet adapters  
(2) Santoprene seals per adapter (one each end)
- 1-3/8" (35 mm) swivel hex nut with internal threads to fit T&S body
- Threads fit Fisher inlet flanges



### B-0468 Wall-Mount Faucet Adapter For T&S Faucet To Wolverine Brass Inlets

- Parts included:  
(2) Faucet adapters  
(2) santoprene seals per adapter (one each end)
- 1-3/8" (35 mm) hex nut with internal threads to fit T&S body
- Threads fit Wolverine Brass inlet flanges



### B-0469 Wall Mount Faucet Adapter For T&S Faucet To Krowne Inlets

- Parts included:  
(2) Adapters  
(1) Coupling nut washer per adapter  
(1) Washer, 3/4 I.D. x 15/16 O.D. x 1/8 thick per adapter
- 1-3/8" (35 mm) hex nut with internal threads to fit T&S body
- Threads fit Krowne inlet flanges

