

## WEIGH MODULES

**RL2200 SS Series**

Stainless Steel, Tank, Hopper and Vessel Weighing Assembly



Available in configurations with three or four mounting assemblies.  
Picture is a representation of actual product.

The RL2200 SS Series mounts are ideal for use in tank, hopper, vessel and many other applications. The low-profile design allows for economical solutions in a competitive marketplace. This rugged, high-precision mount is designed for easy installation and does not require check rods or other stabilizing hardware. The RL2200 SS mount has the added feature of self centering, allowing for side loads without sacrificing performance.

**Specifications**

- Full Scale Output:**  
4.0 mV/V, 2.0 mV/V (2,500 lb)
- Bridge Resistance:**  
350 ohms nominal
- Material/Finish:**  
Stainless steel
- Safe Overload:**  
150% Full Scale
- Rated Excitation:**  
5-10 VDC (20 V maximum)
- Nonlinearity:**  
0.05% Full Scale
- Hysteresis:**  
0.03% Full Scale
- Temperature:**  
Compensated range:  
15°F to 115°F/9°C to 46°C
- Insulation Resistance:**  
5,000 megohms
- Seal Type:**  
Hermetically sealed, IP66/68
- \*Cable Length:**  
30 ft/9.1 m
- Cable Color Code:**  
Red.....+ Excitation  
Black.....- Excitation  
White .....+ Signal  
Green .....- Signal
- Warranty:**  
Two-year limited warranty
- \*Compression load application*



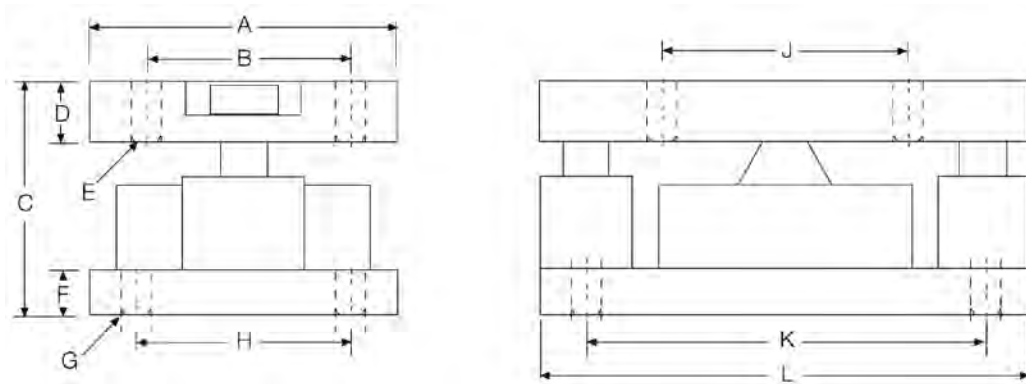
Assembly with integral RL2200 SS compression disk load cell.

**Complete Kit Includes**

- One JB4SS NEMA Type 4X stainless steel signal trim junction box
- Three or four RL2200 stainless steel mounting assemblies
- Three or four RL2200 SS stainless steel, hermetically sealed, compression disk load cells
- 25 ft of our hostile environment EL147HE SURVIVOR® load cell cable

**Applications**

- Tank, hopper or vessel weighing
- Belt or roller conveyors
- Scale platforms and screw feeders

**Dimensions**

Rated Capacity	A	B	C	D	E	F	G	H	J	K	L
<b>lb/in</b>											
2,500-10,000	5.00	3.50	4.00	1.00	0.52	1.00	0.52	3.50	4.00	6.50	8.00
25,000-50,000	6.00	4.50	5.00	1.25	0.78	1.00	0.78	4.50	5.00	7.75	10.00
<b>kg/mm</b>											
1,134.0-4,536.0	127.0	88.9	101.6	25.4	13.2	19.0	13.2	88.9	101.6	165.1	203.2
11,340.0-22,679.6	152.4	114.3	127.0	31.7	19.8	25.4	19.8	114.3	127.0	196.8	254.0

**Order Information**

Load Rating (Per Module)	Part#	Price	
<b>Single Module</b>			
2,500 lb	1,134 kg	<b>76657</b>	\$2,435.00
5,000 lb	2,268 kg	<b>45845</b>	\$2,435.00
10,000 lb	4,536 kg	<b>45844</b>	\$2,435.00
25,000 lb	11,340 kg	<b>45843</b>	\$4,115.00
50,000 lb	22,680 kg	<b>45842</b>	\$4,115.00
<b>3-Module Kit</b>			
2,500 lb	1,134 kg	<b>76899</b>	\$6,915.00
5,000 lb	2,268 kg	<b>46478</b>	\$6,915.00
10,000 lb	4,536 kg	<b>46479</b>	\$6,915.00
25,000 lb	11,340 kg	<b>46480</b>	\$12,050.00
50,000 lb	22,680 kg	<b>46481</b>	\$12,050.00
<b>4-Module Kit</b>			
2,500 lb	1,134 kg	<b>76900</b>	\$9,145.00
5,000 lb	2,268 kg	<b>46482</b>	\$9,145.00
10,000 lb	4,536 kg	<b>46483</b>	\$9,145.00
25,000 lb	11,340 kg	<b>46484</b>	\$15,715.00
50,000 lb	22,680 kg	<b>46485</b>	\$15,715.00

**Replacement Load Cell Order Information**

Load Rating (Per Module)	Part #	Price	
2,500 lb	1,134 kg	<b>76655</b>	\$1,475.00
5,000 lb	2,268 kg	<b>45712</b>	\$1,475.00
10,000 lb	4,536 kg	<b>45713</b>	\$1,475.00
25,000 lb	11,340 kg	<b>45714</b>	\$2,420.00
50,000 lb	22,680 kg	<b>45715</b>	\$2,420.00