



TURKISH BATH LINENS

Spoil yourself with our line of plush Turkish Bath Linens, made of 100 percent Turkish cotton. The collection includes towels in a range of sizes along with a bathrobe and bath rug. And, with three patterns available in four classic shades, these plush Turkish Bath Linens will no doubt become one of your bathroom essentials.

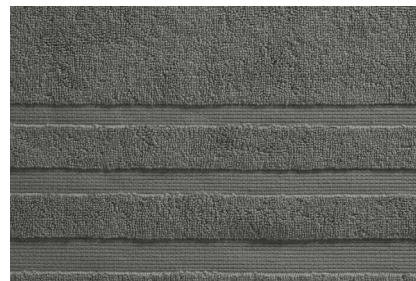
TURKISH BATH LINENS

GET COZY WITH KOHLER

Wrap yourself in the plush warmth of an authentic Turkish cotton towel. Turkish towels (sometimes called peshtemal, hammam, or fouta towels) are crafted from 100 percent Turkish cotton, which is known for its premium feel and extra-long fibers. Kohler has you covered with five sizes of towels within the collection, including large bath sheets, bath towels, hand towels, and wash cloths.

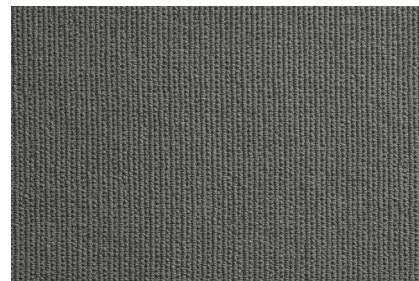
Three woven patterns

KOHLER® Turkish Bath Linens are crafted in Turkey and are offered in three classic patterns: Terry, Textured, and Tatami. The Tatami pattern mimics the woven straw mats sometimes used as floor covering in traditional Japanese design. This towel pattern is only available from Kohler.



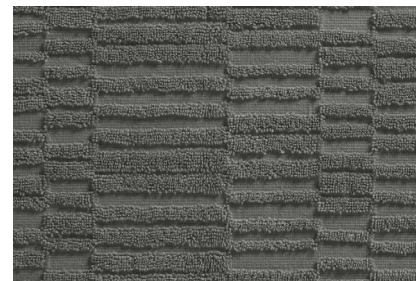
Terry

Woven with long, thick terry cloth loops with a rich 700-gram weight that creates a luxurious drape.



Textured

A waffle weave offers luscious texture with extra-long staple cotton for optimal absorbency.



Tatami

Inspired by traditional Japanese designs, this pattern perfectly balances bold lines with minimalist appeal for distinctive style and rich texture.

Four classic shades



White

Clean and crisp, it is a perfect fit for any style.



Dune

A subtle, neutral shade that lends a calm, soothing feel to any space.



Truffle

Quiet, yet compelling, it adds depth to the room.



Thunder™ Grey

A deep gray makes a statement in traditional, contemporary, or transitional settings.



Turkish Bath Linens bath sheet with Tatami weave K-31506-TA-TRF



Bathrobe

Slip into a plush KOHLER® bathrobe. Available in White and crafted from 100 percent Turkish cotton.



Bath Rug

Stay comfortable stepping out of your bath or shower with a premium bath rug.

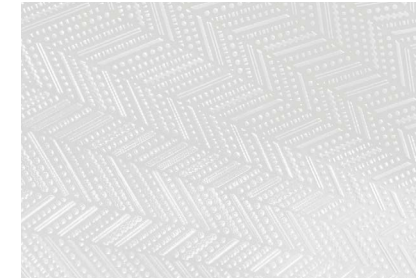
BENTE® ACCESSORY COLLECTION

The Bente accessory collection enhances the beauty and organization of the bathroom countertop space. Delight in the details of your home with Kohler.



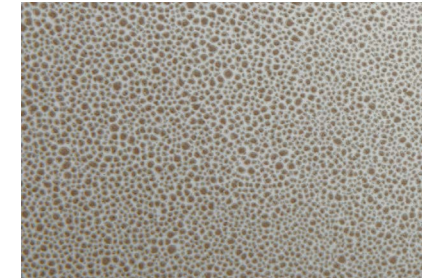
Textures

Each piece was thoughtfully designed to nest together or be used individually in a multitude of spaces throughout the home. Borrowing from popular patterns within the Artist Editions® collection, unique material elements, including light oak and genuine leather, and finishes are beautifully incorporated into these vitreous china countertop accessories.



White Herringbone

The Herringbone pattern strikes modern, geometric notes and complements both transitional and contemporary spaces.



Shagreen Oyster Pearl

The Shagreen Oyster Pearl pattern features iridescent pearly tones and a gently granulated texture.



Shagreen Ebony Pearl

The Shagreen Ebony Pearl pattern celebrates the subtle coloring and distinctive pebbled texture of natural shark and ray leather.

White Herringbone



FIVE-PIECE ACCESSORY SET
K-29590-HD1-0



TWO-PIECE ACCESSORY SET
K-29591-HD1-0

Shagreen Oyster Pearl



FIVE-PIECE ACCESSORY SET
K-29590-SSP-HDN



TWO-PIECE ACCESSORY SET
K-29591-SSP-HDN

Shagreen Ebony Pearl



FIVE-PIECE ACCESSORY SET
K-29590-TB2-HB1



TWO-PIECE ACCESSORY SET
K-29591-TB2-HB1