

RLTM

Stainless Steel Tank Weigh Modules



Picture is a representation of actual product.

The RLTM weigh module assembly features a stainless steel, welded-seal RL30745 or RL32018S-T NTEP Certified load cell and a fully stainless mount including all associated hardware. Using a rocker pin-loading concept, this design provides accurate weighing in most conditions. Standard features include both overload and overlift protection, making it ideal for most outdoor, low-capacity tank and vessel weighing applications. Each Rice Lake RLTM module is provided standard with one load cell with 30 feet of cable and one mount.

Specifications**Full Scale Output:**

2.0 ± 0.2 mV/V

Bridge Resistance:

350 ohms

Material/Finish:

Stainless steel

Temperature:

Compensated range
15°F to 104°F/-97°C to 40°C

Safe Overload:

150% Full scale

Safe Sideload:

100% Full scale

Rated Excitation:

15 V DC

Combined Error:

0.03% Full scale

Insulation Resistance:

5000 megohms

Seal Type:

Welded seal, IP67

Cable Length:

30 ft/9.1 m (500-10 k)

Cable Color Code:

Green.....+ Excitation
Black.....- Excitation
White+ Signal
Red- Signal

Warranty:

Two-year limited warranty

Complete Kit Includes

- One JB4SS NEMA Type 4X stainless steel signal trim junction box
- Three or four Rice Lake RLTM stainless steel mounting assemblies
- Three or four RL30745 or RL32018S-T stainless steel load cells
- 25 ft of our hostile environment EL147HE SURVIVOR® load cell cable

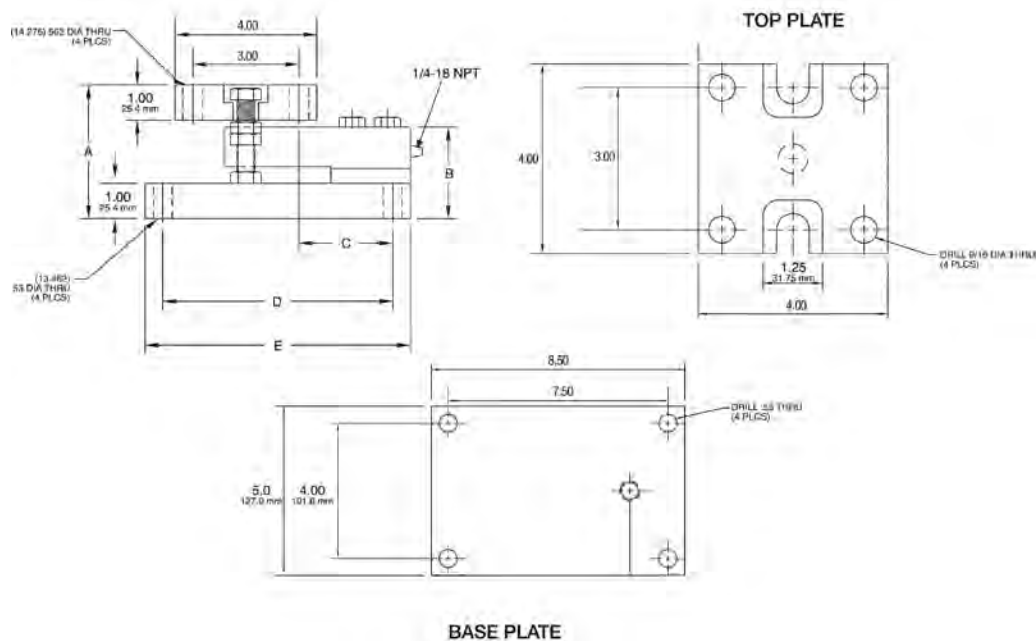
Standard Features

- Capacities: 500-10,000 lb (226.8-4,536.0 kg)
- Stainless steel
- Overload and overlift protection
- Rocker pin loading
- Welded-sealed load cells
- Integral lateral stops
- 30 ft cable on load cells

Applications

- Lower capacity tank and vessel weighing
- Process control and batching

Load Cell Certifications



Dimensions

| Rated Capacity | A | B | C | D | E |
|----------------|-------|------|------|-------|-------|
| lb/in | | | | | |
| 500-2,500 | 3.77 | 2.59 | 2.62 | 6.50 | 7.50 |
| 5,000 | 3.99 | 2.83 | 2.62 | 6.50 | 7.50 |
| 10,000 | 4.27 | 3.08 | 3.88 | 7.50 | 8.50 |
| kg/mm | | | | | |
| 226.8-1,134.0 | 95.7 | 65.7 | 66.5 | 165.1 | 190.5 |
| 2,268.0 | 101.3 | 71.8 | 66.5 | 165.1 | 190.5 |
| 4,536.0 | 108.4 | 78.2 | 98.5 | 190.5 | 215.9 |

Order Information

| Load Rating (Per Module) | Part# | Price |
|--------------------------|---------------|------------|
| 500 lb | 159288 | \$950.00 |
| 1,250 lb | 159289 | \$950.00 |
| 2,500 lb | 159290 | \$950.00 |
| 5,000 lb | 159291 | \$1,150.00 |
| 10,000 lb | 159292 | \$1,150.00 |
| 3-Module Kit | | |
| 500 lb | 162942 | \$2,960.00 |
| 1,250 lb | 162944 | \$2,960.00 |
| 2,500 lb | 162945 | \$2,960.00 |
| 5,000 lb | 162946 | \$3,660.00 |
| 10,000 lb | 162947 | \$3,660.00 |
| 4-Module Kit | | |
| 500 lb | 162948 | \$3,910.00 |
| 1250 lb | 162949 | \$3,910.00 |
| 2500 lb | 162950 | \$3,910.00 |
| 5000 lb | 162951 | \$4,710.00 |
| 10,000 lb | 162953 | \$4,710.00 |