

D2

Specifications

Features	Output Channels	2	
	PIP	1 in standard mode, configurable position and size	
	DSK / Chroma Key	On/Via PIP in standard mode	
	Display Control	Scale, Crop, Position, Mask	
	Visual Effects	Brightness, Contrast, Chroma, Hue, Color Temperature, Color Correction, Gamma, Sharpness (H & V), Noise Reduction, Color Inversion, Flip (H & V), Rotate 90deg	
	EDID	Configurable	
	Transitions	Fade, Cut	
	Logo Capture	Yes	
	Test Patterns	H Ramp, V Ramp, 100% Color Bar, 75% Color Bar, 16x16 Grid, Burst, 50% Gray, Grey Step 1, Gray Step 2, White, Black, SMPTE Color Bar, Logo	
	Sender Card Support	1 Slot	
Sender Card Control	Full support for ColorLight, Linsn, Mooncell. Limited support for Nova		
Performance	Input Resolution	SDI: 720p@50/60 1080i@59.94/60 1080p@23.98/24/25/29.97/30/59.94/60 1080psf@23.98/24/25/29.97/30 VGA: 800x600@60 1024x768@60 1280x1024@60 1440x900@60 1600x1200@60 DVI & HDMI: SMPTE: 625@25/50 PAL 525@29.97/59.94 NTSC 720p@50/59.94/60 1080p@50/59.94/60 1080i@50/59.94/60 VESA: 800x600@60 1024x768@60 1280x1024@60 1280x800@60 1280x1024@60 1360x768@60 1400x1050@60 1440x900@60 1600x1200@60 1680x1050@60 1920x1080@60 1920x1200@60 2048x1152@60 2560x816@60 <i>*not all resolutions supported on VGA</i>	
	Output Resolution	Select from standard set or select user configurable SMPTE: 25/25/50 PAL 525/29.97/59.94 NTSC 1080p@50/59.94/60 1080i@50/59.94/60 720p@50/59.94/60 1280x720@23.98/24/25/29.97/30 1920x1080@23.98/24/25/29.97/30 VESA: 800x600@60 1024x768@60/75/85 1280x720@60/60 1280x800@60 1280x1024@60 1360x768@60 1366x768@60 1400x1050@60 1440x900@60 1600x1200@60 1680x1050@60 1920x1080@60 1920x1200@60 2048x1152@60 2560x816@60 <i>*not all resolutions supported on VGA</i>	
	Genlock	480i 576i 720p@50/59.94 1080i@50/59.94 1080p@50/59.94/60	
	Refresh Rates	23.98 29.87 30 59.97 60 75	
	Standards Supported	SDI: SMPTE 425M (Level A & B) SMPTE 424M SMPTE 292M SMPTE 259M-C DVB-ASI VGA: VGA-UXGA HDMI: 1.3 DP: 1.1	
	Grayscale Processing	12bit	
	Connectors	Video Input	6 x BNC (SDI/Genlock each with Loop) 1 x DE-15 (VGA) 1 x HDMI (with Loop) 1 x DVI (with Loop) 1 x DisplayPort
		Output	DVI / HDMI / VGA
		Power	IEC
		Update	USB B
LAN		RJ45	
Power	Input Voltage	AC 85-264V 50/60Hz	
	Max Power	45W	
Operation	Temperature	0-45°C	
	Humidity	10-85% RH	
Physical	Weight	3.7kg (net) 6.9kg (packaged)	
	Dimensions	480 x 403 x 45mm (device) 535 x 455 x 130mm (packaged)	

Presentation Switcher & Seamless Scaler



The standard in presentation switching, D2 is so much more than seamless switcher.

With multiple output modes, this video processor is a very flexible solution across a range of applications whether for scaling, presentation switching, 4K distribution or broadcast.

Truly an All-in-One solution, D2 accepts a wide range of input signals in a huge array of formats. Inputs can be converted, scaled, transcoded to standard DVI/HDMI outputs or output to optional ports including SDI, HDBaseT and FiberPort.

Intuitive and Easy to Use.

D2 maintains, yet builds on a familiar look and interface. The bright OLED display is easy to read in all light conditions, large illuminated buttons allow easy switching, and for fast setting numbered buttons can be used to digitally enter resolutions and values with high accuracy, avoiding long spins on the adjustment knob.

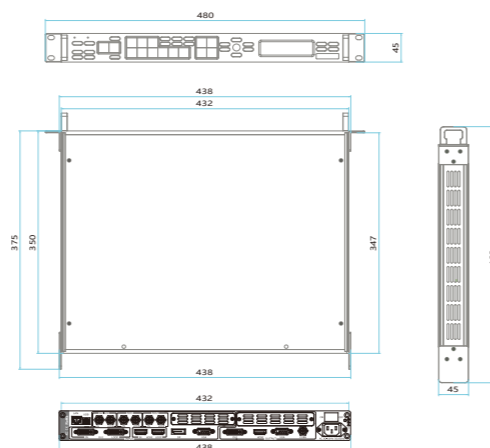
Advanced Performance.

Not only does D2 have a multiple operation modes, this presentation switcher and scaler packs in a host of professional features including broadcasting Genlock and EDID management. On board processing is 12bit allow fine control for Noise Reduction, Brightness, Contrast, and Saturation. D2 supports modern high resolution standards up to 2560x1600 @ 60Hz. In addition to a wide range of standard output resolutions, D2 supports user customised output resolutions for the ultimate in control.

Order Codes

Product Code	Item
100-0628-05-0	D2
190-0628-01-0	Dual CVBS Input Module
190-0628-02-0	Dual USB Input Module
190-0628-03-0	Dual VGA Input Module
190-0628-04-0	Dual HDMI Input Module
190-0628-05-0	Dual DVI Input Module
190-0628-06-0	Dual SDI Input Module
190-0628-21-0	SDI / Fiber / HDBaseT Output Module

Dimensions





Optional Modules



Dual USB Input



Dual CVBS Input



Dual SDI Input/Loop



Dual DVI Input



Dual HDMI Input



Dual VGA Input



HDBaseT Output Module

Features to Love

Multi Mode Operation
Genlock built in

High Performance 12bit Processing
Expandable including 4K Support

Remote control Apps

Visual Effects

Apply a range of visual effects and enhancements.



Chroma



Brightness



Contrast



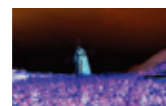
Hue



Gamma



Color Temperature



Invert



Sharpen

Picture In Picture

In Standard Mode, PIP can be applied in any size or position.



PIP

DSK/Chroma Key

On PIP, DSK or a Chroma Key can be applied, great for logos and text overlays.

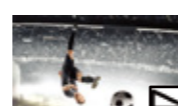
Noise Reduction

Where signals are of low quality and displaying noise / scatter apply the D2 Noise Reduction feature to reduce the impact of the noise on the output signal and improve visual performance.



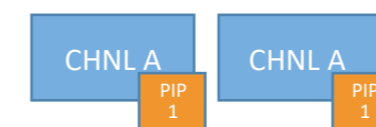
Rotation and Flip

Output may be rotated, flipped horizontally or vertically.



Operation Modes

Standard Mode



Both the DVI and HDMI output identical signals and resolutions – the HDMI performing as monitor. PIP in can be set in any size or position. X and Y offsets can have negative positions.

Switcher Mode



The DVI performs as Program output while the HDMI operates as Preview output. Resolution settings are identical for both the DVI and HDMI.

Input selection can be made on Preview. Use the dedicated TAKE button to seamlessly switch between Preview and Program.

Dual 2K Mode



The DVI and HDMI perform independently, with each output able to have resolution individually set. Dual 2K mode is ideal for distributing 4K inputs and for outputting to LED displays of differing pitch.

Min Delay Mode



Output resolution is set and locked to the input resolution, with the processor otherwise operating as per Standard Mode. Min Delay operations as the setting suggests, minimises signal delay and is especially useful where SDI output module option is fitted.

Scale

Scale output(s) to any size within the selected resolution range.



Crop & Position

Select X and Y offsets along with width and height to select any image part for output.



Mask

Set output masks for top, bottom, left and right or select from a preset.

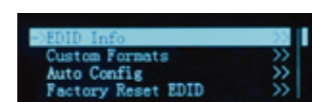


Format

D2 accepts most common input formats, and outputs in an even greater array of recognised industry standards up to 2560x1600 @ 60Hz. Additionally D2 allows users to specify any custom output resolution within this range.

Configure EDID

Each compatible input can be individually configured for EDID.



Apps and Remote Control

Windows

Continuing in the RGBlink tradition, D2 includes Windows® software allowing communication by USB or a LAN connection. Along with all settings and operations, updates can be installed via USB connection.



OSX

With many video professionals making use of Apple® Mac laptops, RGBlink uniquely provides a native OSX app allowing full control of settings, operations and updates.



iPhone & iPad

A native universal app for iPad and iPhone is available, providing remote control of settings and making a ideal operations remote where a WiFi connected LAN is available.



Android

RGBlink offers a native Android app for D2. With a wide range of Android devices available, the app is an excellent remote for settings and operations remote of Wi-Fi connected LAN processors.

