



Accessories

Flightcases



1U Rack Sleeves

Robust yet Lightweight protection for 1U video processors and similar equipment. Standard 19" rack included. Available with 290mm and 390mm internal depths.



2U Rack Sleeves

Protection for 2U video processors and similar equipment. Standard 19" rack included. Available with 320mm and 460mm internal depths.



4U Rack Case

Protection for 3U of 19" rack mounting equipment. Removable covers front and rear, plus heavy duty lifting handles, recessed latches and ball corners. Internal depth 550mm.



8U Rack Case

Protection for 7U of 19" rack mounting equipment. Removable covers front and rear, plus heavy duty lifting handles, recessed latches and ball corners. Internal depth 565mm.

Video Cable

DP to DP Cable



- DisplayPort 1.2 compliant
- Support 4kx2k@60Hz transmission
- Up to 21.6Gbps bit rate
- Multiple strands of 28AWG pure copper core
- 5-Layer anti-interference structure, shielding rate up to 85%
- Detachable protection caps with chain
- 50um plating connectors durable over 1000 repeated plug and unplug
- Stainless stainless screw lock
- Velcro strap for easy storage
- Synchronized audio and video lossless transmission
- Molded connectors with strain relief

DVI to DVI Cable



- Support 3840x2160@30Hz transmission
- 2 x DVI-D male connector
- Multiple strands of 28AWG pure copper core
- 5-Layer anti-interference structure, shielding rate up to 85%
- Detachable protection caps with chain
- 50um plating connectors durable over 1000 repeated plug and unplug
- Stainless stainless screw lock
- Velcro strap for easy storage

		100±10Ω	100±10Ω
Performance	Nominal Impedance	100±10Ω	100±10Ω
	Nominal Capacitance	84±2pF/m	84±2pF/m
	Nominal Velocity of Propagation	2.38 x 105km/s	2.38 x 105km/s
	DC Resistance	195 Ω/km	195 Ω/km
	Dielectric Strength	DC500V <1min	DC500V <1min
Standard	RoHS	Yes	Yes
	Minimum Bend Radius	50mm	50mm
Environment	Working Temperature	-20 °C ~80°C	-20 °C ~80°C
	Dimensions (Net)		Connector / 42.5x40x15.6mm
Physical	Weight (Net)	2m(0.41kg) / 3m(0.59kg) / 5m(0.93kg) / 7m(1.27kg) / 10m(1.79kg) / 15m(2.65kg)	2m(0.41kg) / 3m(0.59kg) / 5m(0.93kg) / 7m(1.27kg) / 10m(1.79kg) / 15m(2.65kg)

HDMI to HDMI Cable



- HDMI 2.0 compliant
- Support 4kx2k@60Hz transmission
- Up to 18Gbps bitrate
- Multiple strands of 28AWG pure copper core
- 5-Layer anti-interference structure, shielding rate up to 85%
- Detachable protection caps with chain
- 50um plating connectors durable over 1000 repeated plug and unplug
- Stainless stainless screw lock
- Velcro strap for easy storage
- Synchronized audio and video lossless transmission
- Molded connectors with strain relief

HDMI to DVI-D Cable



- HDMI 2.0 compliant
- Support 4kx2k@60Hz transmission
- Up to 18Gbps bitrate
- Multiple strands of 28AWG pure copper core
- 5-Layer anti-interference structure, shielding rate up to 85%
- Detachable protection caps with chain
- 50um plating connectors durable over 1000 repeated plug and unplug
- Stainless stainless screw lock
- Velcro strap for easy storage
- Synchronized audio and video lossless transmission
- Molded connectors with strain relief

		100±10Ω	100±10Ω
Performance	Nominal Impedance	100±10Ω	100±10Ω
	Nominal Capacitance	84±2pF/m	84±2pF/m
	Nominal Velocity of Propagation	2.38 x 105km/s	2.38 x 105km/s
	DC Resistance	195 Ω/km	195 Ω/km
	Dielectric Strength	DC500V <1min	DC500V <1min
Standard	RoHS	Yes	
	Minimum Bend Radius	50mm	50mm
Environment	Working Temperature	-20 °C ~80°C	-20 °C ~80°C
	Dimensions (Net)	Connector / 42mmx21mmx11.4mm	Connector / 42.5mmx40mmx15.6mm HDMI 42mmx21mmx11.4mm
Physical	Weight (Net)	2m(0.31kg) / 3m(0.41kg) / 5m(0.60kg) / 7m(0.79kg) / 10m(1.07kg) / 15m(1.53kg)	2m(0.31kg) / 3m(0.41kg) / 5m(0.60kg) / 7m(0.79kg) / 10m(1.07kg) / 15m(1.53kg)

STREAMING

CAPTURE

SWITCHER

STEAM/CODECS

CLOUD/DECODER

ASK Series
Collaboration Solutions

PRO AV

D Series
Digital Processors

X Series
Universal Processors

M Series
Mixing & Scaling

FLEX Series
Mixed Signal Matrix

Q Series
Multi-signal Matrix

1 Series
Switcher/Scalers

T Series
Control Consoles

Subito Series
LED Control Solutions

RMS Series
Monitoring Solutions

MSP Series
Video Tools/Extender
Signal Convertor
Signal Distributors

Accessories

Software

Reference

Contact

Mini DP to DP Cable



- Support for 4kx2k@60Hz transmission
- Bi-directional transmission
- 1 x Mini DisplayPort and 1 x DisplayPort connector
- Molded Connectors with strain relief
- Covers connector protection caps

Performance	Nominal Impedance	100±10Ω
	Nominal Capacitance	84±2pF/m
	Nominal Velocity of Propagation	2.38 x 105km/s
	DC Resistance	195 Ω/km
	Dielectric Strength	DC500V <1min
	Voltage Rating	30V
Standard	RoHS	Yes
	Minimum Bend Radius	50mm
Environment	Working Temperature	-20 °C ~80°C
	Weight (Net)	2m / 3m /5m / 7m / 10m / 15m

Mini DP To DVI Adapter



- Thunderbolt 2 Port Compatible
- Transmits video resolution up to 3840x2160@30
- Gold-plated connectors resist corrosion

Mini DP to DP Adapter



- Thunderbolt 2 Port Compatible
- Synchronous transmission of 4k2k@60audio and video
- Lightweight and portable
- Gold-plated connectors resist corrosion

Connectors	Input	Mini DisplayPort Plug	Mini DisplayPort Plug
	Output	DVI 24+5 Female	DVI 24+5 Female
Performance	Input Resolution	SMPTE	720p@60 1080p@60 2160p@60
		VESA	1280x720@60 1360x768@60 1366x768@60 1600x900@60 1920x1080@60 2540x1440@60 3480x2048@60 3840x2160@60
	Output Resolution	SMPTE	720p@60 1080p@60 2160p@30
		VESA	1280x720@60 1360x768@60 1366x768@60 1600x900@60 1920x1080@60 2540x1440@60 3480x2048@30 3840x2160@30
Supported Standard	DisplayPort 1.2		
Physical	Weight	0.03kg	0.025kg
	Dimension	235+10mm	150+10mm



Optical fiber cable

- 2/4/6/8/12 core outdoor optical fiber cable
- LC/SC/ST connectors to choose
- Multi-mold and single mode fiber to choose
- Extra wide latch for quick connection/removal
- Stainless steel metal tube ,Kevlar tensile ,stainless steel metal braiding,TPU Jacket
- G657compliant optic fiber, excellent stretchability and anti-bending feature
- TPU jacket to prevent mice biting
- Working temperature -40~80°C
- Fit for rental application
- Optional cable reel for easy storage

Connectors	Input	LC/SC/ST				
	Output	LC/SC/ST				
Performance	Tensile	Long Term	300N			
		Short Term	600N			
	Crush	Long Term	2000N/100mm			
		Short Term	3000N/100mm			
	Bending Radius	Dynamic	20D			
		Static	10D			
	Cable loss	Single Mode	1310nm	≤ 0.4db/KM		
			1500nm	≤ 0.3db/KM		
Multiple Mode		850nm	≤ 0.4db/KM			
		1310nm	≤ 0.3db/KM			
Environment	Temperature	-40~80°C		-20~75°C		
Physical	No.of Fibers	2	4	6	8	12
	Size	3.3mm	5.0mm	5.0mm	6.0mm	6.0mm

Mini DP to HDMI Adapter



- Synchronous transmission of 4k2k@60 audio and video
- Support high dynamic range image transmission
- HDCP 2.2 compliant
- Jitter cleaning

Connectors	Input	Mini DisplayPort	
	Output	HDMI-A Female	
Performance	Input Resolution	SMPTE	720p@60 1080p@60 2160p@60 4320p
		VESA	1280x720@60 1360x768@60 1366x768@60 1600x900@60 1920x1080@60 2540x1440@60 3480x2048@60 3840x2160@60 1920x1080@60 2540x1440@60 3480x2048@60 3840x2160@60
	Output Resolution	SMPTE	720p@60 1080p@60 2160p@60
		VESA	1280x720@60 1360x768@60 1366x768@60 1600x900@60 1920x1080@60 2540x1440@60 3480x2048@60 3840x2160@60
Supported Standard	DisplayPort 1.4		
Physical	Weight	0.025kg	
	Dimension	230x45x6mm	



Cat5E/Cat6 Cable

- Durable break-resistant connector
- Copper terminals with anti-oxidation Nickel & Gold plating
- Easy to see florescent connector boot
- Extra wide latch for quick connection/removal
- Dual PVC jackets with high strength and heat resistance
- Pure copper wire core , each formed by 7 independent wire to conduct with low resistance
- 50um plating connectors durable over 1000 repeated plug and unplug
- Velcro strap for easy storage

		Cat5E	Cat6
Conductor	Wire Gauge	24AWG	24AWG
	Material	Bare Copper Twisted Pair	
	Cord Size	7/0.2/BC+0.008	7/0.2/BC+0.008
Insulation	Avg.Thickness	0.19mm	0.2mm
	Min.Thickness	0.16mm	0.16mm
	Material	HD-PE	
	Color	Orange*White/Orange, Green*White /Green, Blue*White/Blue, Brown*White/Brown	
Jacket	Diameter	0.98+0.05mm	0.98+0.03mm
	Avg.Thickness	0.6+0.05mm	0.6+0.05mm
	Material	110P PVC	110P Matte
Physical	Diameter	6.0+0.2mm	6.0+0.015mm
		Length can be customized, up to 100 meters	1.2m / 3m /10m / 20m / 30m

HDMI 2.0 AOC Active Optical Cable



- Up to 300m Maximum Length.(Custom Length Available)
- Low Power Consumption: 250mW (max). (No need external power)
- Plug and Play
- Compatible with HDMI 2.0 standard
- Support HDCP
- Self-detecting function for EDID information
- No loss of signal – delivering crystal clear digital images instantly
- Supports computer resolutions to 1080P and 4K2K(60P)
- Hybrid optical cable with fiber and copper wire

Cable	Hybrid Cable	4 core fiber +7 copper wires + jacket	
	Fiber	50/125 um multimode fiber	
Connectors	Input	SOURCE	HDMI-A
	Output	DISPLAY	HDMI-A
Performance	Supported Resolutions	HDMI 2.0	
		VESA	720p@60 1080p@60 2160p@60 1280x720@60 1360x768@60 1366x768@60 1600x900@60 1920x1080@60 1920x1200@60 2540x1440@60 3480x2048@60 3840x2160@60
	O/E Converter	SOURCE	4 channel 850 nm VCSEL array
		DISPLAY	4 CH GaAs PD array
	Bending Radius	52mm (min)	
	Tensile Resistance	200N (max)	
Supported Standards	HDMI	2.0	
	HDCP	2.2/1.4	
Power	Input Voltage	HDMI+5V(No need external power)	
	Working Current	≤45mA	
	Power Consumption	≤250mW	
Environment	Temperature	-10°C~50°C	
	Humidity	5%~90%	

STREAMING

- CAPTURE
- SWITCHER
- ENCODER
- CLOUD/DECODER
- ASK Series Collaboration Solutions

PRO AV

- D Series Digital Processors
- X Series Universal Processors
- M Series Mixing & Scaling
- FLEX Series Mixed Signal Matrix
- Q Series Multi-signal Matrix
- 1 Series Switcher/Scalers
- T Series Control Consoles

Subito Series LED Control Solutions

RMS Series Monitoring Solutions

MSP Series Video Tools/Extender Signal Converter Signal Distributors

Accessories

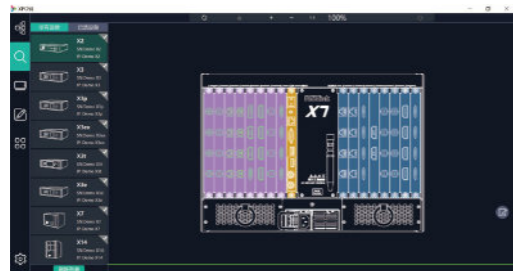
- Software
- Reference
- Contact



XPOSE is RGBlink's self-developed video processing equipment operating software, which enables unified control and management of RGBlink's different series of devices on XPOSE, that greatly reducing the learning costs.
The third-party certified products can also be controlled through the API open protocol, which achieves high efficiency, compatibility, stability and greatly improve user's operating experience.

Single App

XPOSE provides remote control and configuration for all the modern RGBlink universal and presentation products. One app - XPOSE - is all that is needed from the everyday X1 to the large scale X14.

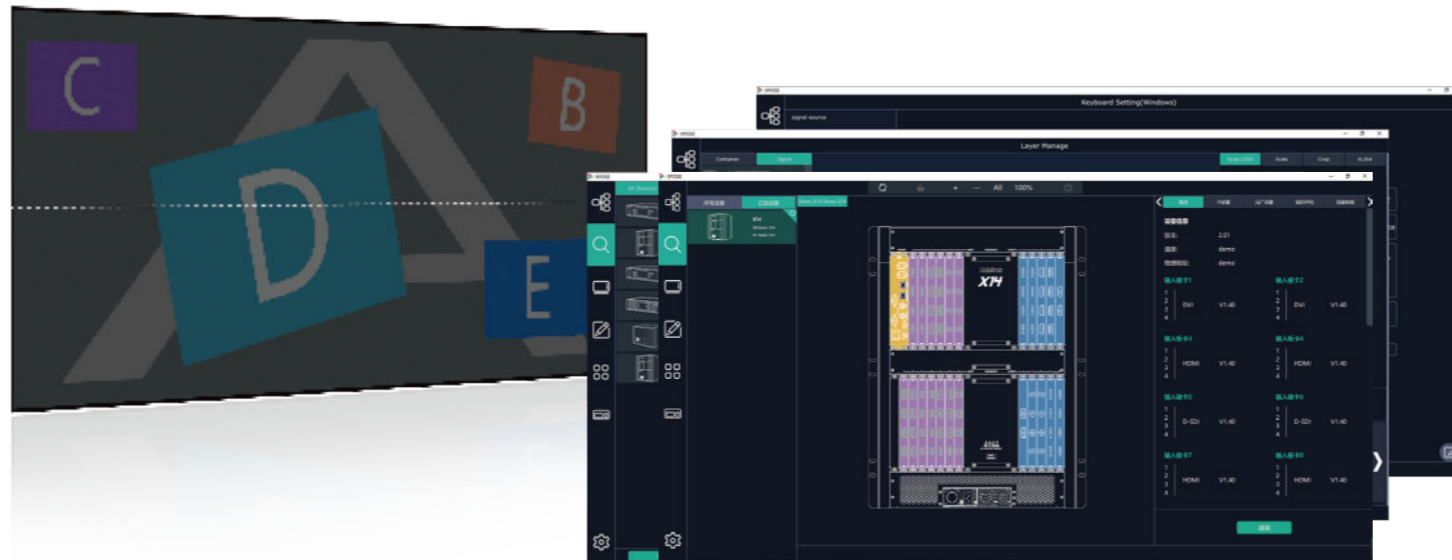


Modern Tools

XPOSE provides remote control and configuration in rich graphical interface that supports not only traditional mouse and keyboard, but is touch friendly too.

Control Your Way

Regardless of you OS favourite, Windows, macOS or Linux, there is an XPOSE edition. XPOSE, while respecting the standards on each OS platform, is the same, with a common underlying code base for enhanced compatibility and harmonisation.



Flexible Connections

Many of our modern products support LAN based connections. XPOSE naturally supports this mode of connectivity across either wired or wireless networks. And XPOSE also supports both USB and serial connections where those type are available on the video processor.

Topology from Top to Bottom

- Hands on as you open package.
- Step 1: Read In & Out out for the device once you open the package;
- Step 2: Connect inputs and outputs just like your connection;
- Step 3: Double check the connection by online synchronization;
- Step 4: Set the display area to be ready for the layers;
- Step 5: Payout by manual or schedule;
- Step 6: Monitoring all in one.

Share Settings

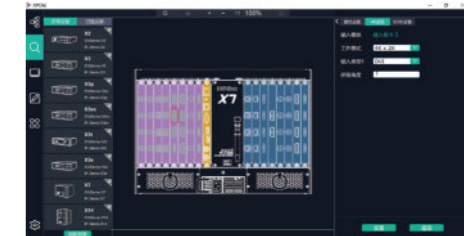
Save settings to a disk file for later recall, or sharing to other users.

Designed for Presentation Processors

While presentation processors have on board control with OLED displays, and large tactile buttons, there are many situations where it may be desirable to either remote control or simply create configurations from computer.

4K Support

Configuration of 4K sources is made easy with multiple configuration possibilities.



Complex Layouts

Sophisticated configurations are possible with not only pixel-to-pixel scaling of input sources, but also extensive output controls including advanced EDID and rotation capabilities.

Drag 'n' Drop

Drag and Drop both sources and output monitors onto the virtual canvas. Group sources on the canvas for ease of control and identification.

Live Video Preview

See preview of sources directly in XPOSE. Selected processors with H.264 IP streaming enable this features which can be a powerful monitoring tool.

Designed for Universal Processors

XPOSE is the essential application for configuration of the RGBlink range of universal video processors – X series, F series, D series and so on. Whether configuration for an installation monitoring or dynamic control.

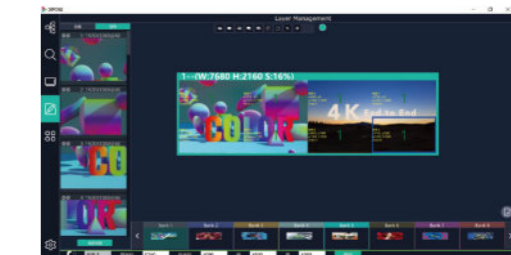


Developing Platform

XPOSE is under constant development, with enhancements and features regularly being added. The RGBlink team embracing DevOps to bring new releases to customers sooner.

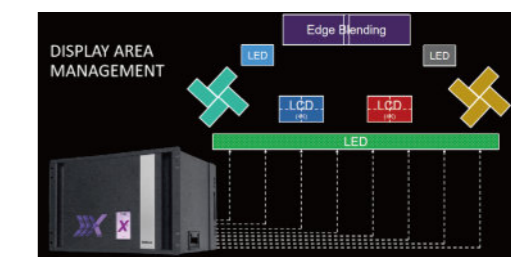
Virtual Canvas

Position output displays (monitors) on a virtual canvas pixel-by-pixel. On a separate layer, then place video sources dynamically, position as required.



Multi-Mode Operations

XPOSE supports all the multi-mode operations available on the connected processor.



STREAMING

- CAPTURE
- SWITCHER
- ENCODER
- CLOUD/DECODER
- ASK Series Collaboration Solutions

PRO AV

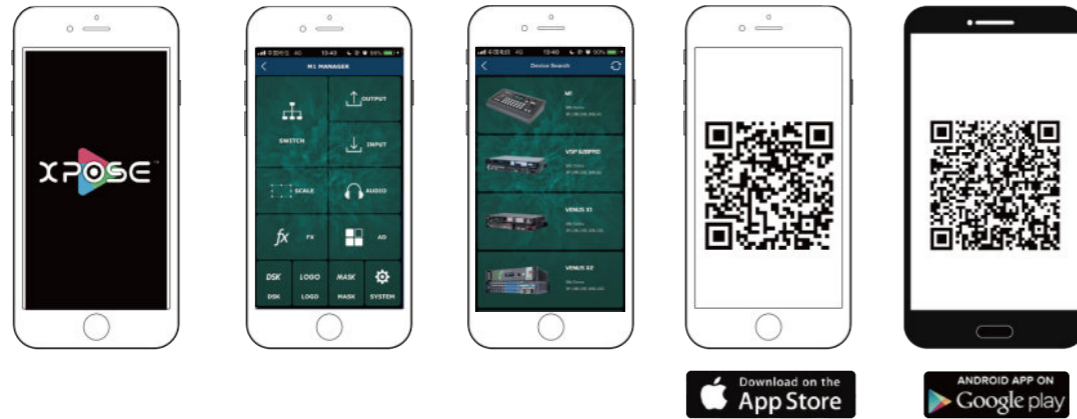
- D Series Digital Processors
- X Series Universal Processors
- M Series Mixing & Scaling
- FLEX Series Mixed Signal Matrix
- Q Series Multi-signal Matrix
- 1 Series Switcher/Scalers
- T Series Control Consoles

Subito Series LED Control Solutions

- Subito Series LED Control Solutions
- RMS Series Monitoring Solutions
- MSP Series Video Tools/Extenders/Signal Convertors/Signal Distributors
- Accessories
- Software
- Reference
- Contact



XPOSE Mobile, fully developed in house by the RGBlink team provide a convenient remote control and configuration of universal and presentation processors.



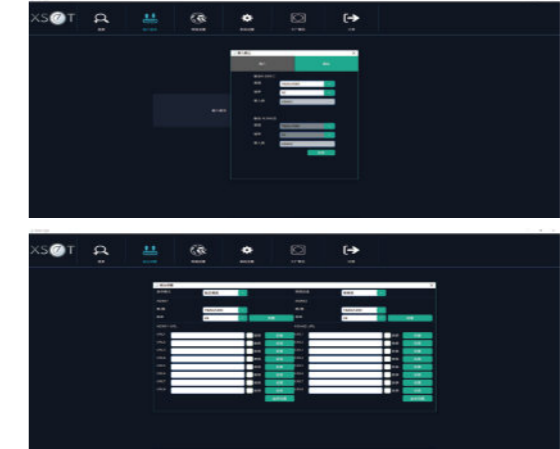
XPOSE mini APP is a mobile version APP customized by RGBlink for the mini series. It can be completely separated from the local and computer version of XPOSE control and can quickly and easily achieve various function management applications on the mobile phone APP.



Configure and monitor selected MSP series products.

Control for MSP

An easy to use stand-alone tool, XSET uses LAN or USB connections. Product such as the MSP225 and MSP226 can be fully configured via LAN, for example.



XTOOLS is the simple and modern way to update and install features to RGBlink products.

Consistent Updates

With one update package format, one app, the update process is streamlined, familiar and consistent, for greater confidence and reliability.

Common Update Tool

All RGBlink modern processors are updatable from XTOOLS. Simply download the update package from the website, and select the update from within XTOOLS to start.

Review & Update

Connect a processor to review the version status for individual components of the processor. The interface will advise differences allow clear upgrading or even downgrading. XTOOLS reports status and prompts for any actions.

Packaged Updates

Each update package is self contained with all necessary files. The full range of selected updates are done within XTOOLS.

MASK

Load and prepare MASK BMP files.

Upload Features

XTOOL is the app to prepare for install a range of configurable on device features, with a wizard style interface.

OSD

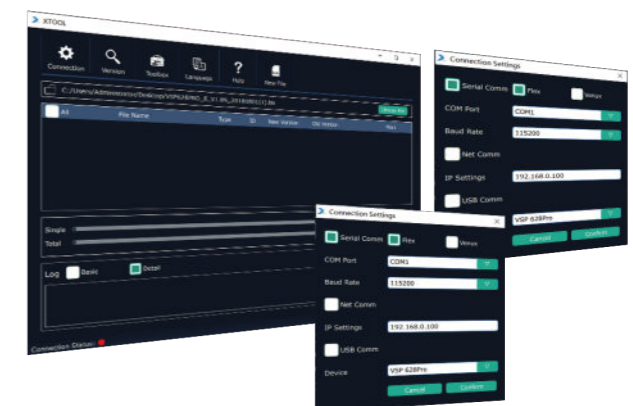
Configure OSD (On Screen Text) for loading on to products such as M2 or M3.

STILL

Load and prepare STILL BMP files and set transparency (alpha).

LOGO

Load and prepare LOGO BMP files.



STREAMING

- CAPTURE
- SWITCHER
- ENCODER
- CLOUD/DECODER
- ASK Series Collaboration Solutions

PRO AV

- D Series Digital Processors
- X Series Universal Processors
- M Series Mixing & Scaling
- FLEX Series Mixed Signal Matrix
- Q Series Multi-signal Matrix

- 1 Series Switcher/Scalers
- T Series Control Consoles
- Subito Series LED Control Solutions
- RMS Series Monitoring Solutions
- MSP Series Video Tools/Extenders/Signal Converters/Signal Distributors
- Accessories
- Software
- Reference
- Contact