



MSP Series

Video Tools/Extenders

Signal Convertors Signal/Signal Distributors

MSP 200PRO

Signal Monitor & Generator



Format and Test Pattern Generation are just two of the many features of MSP200pro.

Built in are standard video outputs for 3G-SDI, DVI/HDMI and CVBS. Set the output format from the built-in touch screen display by selecting from a wide range of common formats.

Popular test patterns can be easily selected with motion or without, and time code can be generated and displayed allowing inspection frame delay.

MSP200pro also includes a USB media input port as standard – use a MPEG4 or image as a test signal source, opening up many possibilities for producing bespoke testing configurations.

Optional install an SDI or HDMI input module to make use of other external video sources. And EDID management is built right in too.

Preview

Use MSP200pro as a remote preview monitor. Insert USB media for on screen display, and use that media (video or images) for output. Add the optional HDMI or SDI interface and both preview and pass through that external source too.

Genlock

Genlock Y is supported and looped through. If this not used, then MSP200pro can generate Genlock Y or HS/VS.

Wave Form Inspection

Several wave form inspection graphs are available on screen, and in addition graphing of the audio signal can be displayed.

Test Patterns

A range of common test patterns are built in and selectable via the touch screen interface. Motion of a pattern can be turned on/off.

Additional test patterns of test images can be used by setting the input source to the standard USB input, and selecting custom files from USB.

Format Generator

A huge range of industry standard formats for both resolution and refresh are available for selection on board MSP200pro. These set the format for the standard SDI, CVBS and DVI output interfaces. The DVI port supports HDMI (10bit) as well as VGA, using adapters.

Audio

On board audio is available and output on both the audio jack and to signals that support embedded audio. When using external media (USB or the optional SDI/HDMI), embedded audio is passed through.

Portable

MSP200pro supports battery operation - simply fit standard Li-on batteries to the internal compartment.

Rugged

MSP200pro is designed for the mobile professional. The extended housing helps protect connectors and there is strong glass cover for the touch display. MSP200pro comes complete with case for the ultimate in protection between locations.



MSP 221

EDID Manager



In modern digital video, Extended Display Identification Data(EDID) allows display devices to describe specification information to the video source equipment.

Using MSP 221 can resolve and prevent a number of EDID related issues, ensuring the expected output from a video source device by broadcasting a consistent EDID, even when display devices are switched, re-plugged or re-powered.

Additionally MSP 221 features HDCP tools resolving potential conflict situations when video is output to DVI or VGA equipment.

Connect

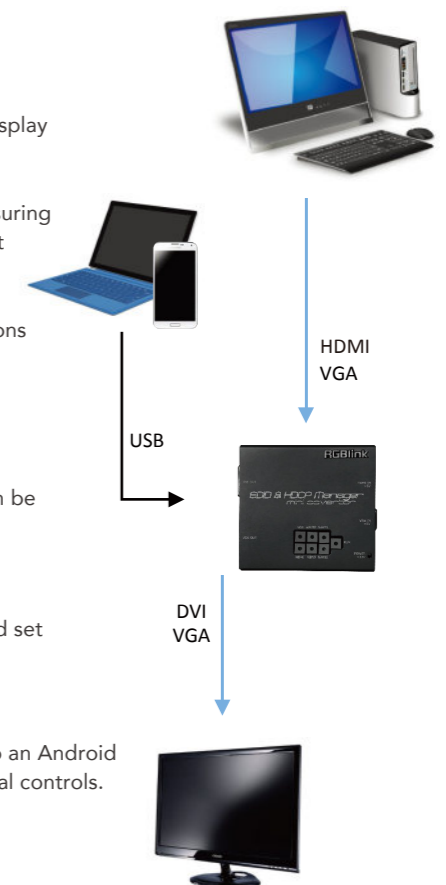
Connect MSP 221 between video source and display device. Input source can be HDMI or VGA (RGBVH). Output to display device is DVI or VGA.

Set

Capture and store EDID information from Display Device for use, or enter and set EDID from the keypad.

Control

RGBlink uniquely provides an Android app for set EDID. Connect MSP 221 to an Android device by USB, and configuration is easy with now familiar touch and graphical controls. Additionally Windows® software is also available for USB connection.



STREAMING

- CAPTURE
- SWITCHER
- STEAM/CODECS
- CLOUD/DECODER
- ASK Series Collaboration Solutions

PRO AV

- D Series Digital Processors
- X Series Universal Processors
- M Series Mixing & Scaling
- FLEX Series Mixed Signal Matrix
- Q Series Multi-signal Matrix
- 1 Series Switcher/Scalers
- T Series Control Consoles
- Subito Series LED Control Solutions
- RMS Series Monitoring Solutions
- MSP Series Video Tools/Extenders Signal Converters Signal Distributors
- Accessories
- Software
- Reference
- Contact

MSP

Extenders – cat5/6



MSP 315-4 – HDMI 1.4 to HDBaseT Extender Set

The MSP 315 HDMI extender adopts a single CAT5/CAT6 cable, including the Transmit terminal (TX) and Receiving Terminal (RX). A single CAT 5 and CAT6 cable extends the 1080P full HD HDMI signal distance to 100m. The MSP 315 supports lossless audio formats such as 4K*2K (3840*2160@30hz), 1080p full HD resolution, HDCP transmission protocols, high bit rate (HBR) Dolby TrueHD and dts-hd Master.

MG



MSP415 – HDMI I HDBaseT Set

Extend HDMI signals over Cat5/6 cables with the MSP415 HDBaseT Extenders. Delivered as a Transmitter and Receiver pair, MSP415 supports signals up to 4K DCI (4096x2160@60Hz) with 8bit YUV 4:4:4 color space and support for HDCP 2.x and HDR technologies.

MSP

KVM over IP



IC2/ IC2+ Distributed Integration Manager

Meeting the growing requirements for distributed management, control and display of compute and other video systems, IC2 is so much more than KVM. IC2 provides secure IP based and advanced RGBlink video technologies for demanding environments where high performance and quality are essential. Designed for multi-point applications, RGBlink IC2 are universal transmitter receivers that can be employed in a wide range of combinations in support of a diverse and dynamic range of applications. Each device as receiver/RX can support display of multiple video sources in flexible layouts with features including zoom and overlay. Video sources up to 1080p60 are delivered with low latency and high quality. Switching between sources is seamless and glitch free. USB mouse, keyboards and serial control devices may be used allowing remote control of connected computers from any designated point of control.

* MG product may be fitted into MSP Garage

MSP

Encoder/Decoder



MSP 325H – HDMI Encoder

Encode HDMI signals for H.265 or H.264 IP streaming transmission with the MSP325H. Resolutions up to 1080p are supported with facility for audio insert via the mini Jack port. On board features include OSD and LOGO which can be set via LAN connection along with other settings to configure resolution and bit rate.



MSP 326L – H.265 Decoder And Transcoder

MSP 326L supports stream decoding of mainstream standards such as H.265 and H.264; supports standard Audio and video stream decoding in quasi-TS stream format; HDM output resolution can support 4K@60Hz (3840*2160@60HZ) Support HLS, RTMP, RTSP, UDP/MULTICAST, Onvif and other mainstream the network protocol; 1 channel two-channel audio output, supports decoding of AAC-LC, G.711 audio formats; Built-in webserver for management and configuration via browser

STREAMING

- CAPTURE
- SWITCHER
- STEAM/CODECS
- CLOUD/DECODER
- ASK Series Collaboration Solutions

PRO AV

- D Series Digital Processors
- X Series Universal Processors
- M Series Mixing & Scaling
- FLEX Series Mixed Signal Matrix
- Q Series Multi-signal Matrix
- 1 Series Switcher/Scalers
- T Series Control Consoles
- Subito Series LED Control Solutions

RMS Series Monitoring Solutions

- MSP Series Video Tools/Extenders Signal Converters Signal Distributors

Accessories

Software

Reference

Contact

MSP

Extenders – Fiber



MG

MSP 209M/ MSP 209S – Ethernet | Multi Mode Fiber

For Ethernet connections up to 1km/10km, MSP209M/MSP209S is a IEEE802.3ab 1000Base-T and IEEE802.3z 1000Base-LX compliant device set, supporting up to Gigabit Ethernet. MSP 209S/M-SP209S is supplied “ready to use”.



MSP 317 – 12G SDI Optical Fiber Converter

MSP317 is a all-in-one 12G SDI optical fiber converter, by dip switch it can be set as TX mode (12 SDI to optical fiber) or RX mode (optical fiber to 12G SDI).The supported resolution is for to DCI 4K25 and UHD 4K60 signals. This converter comes with a 12Gbps SFP+ transmission distance up to 10km, two 12G/HD/SD-SDI port one working as input and the other as loop out under TX mode or two identical outputs under RX mode.



MG

MSP 318N – HDMI 2.0 Fiber Extender Set

The MSP 318N is an HDMI 2.0 optical fiber transmission extender consisting of a transmitter and a receiver. Equipped with corresponding SFP multi-mode fiber and single-mode 10 Gigabit fiber transmission, it can transmit the longest distance of 300M and 60KM respectively. Support 4K@60HZ (YUV4:4:4), support HDR and HDCP2.2 standards.



MG

MSP 217 – 3G-SDI | FIBRE

For extended transmission of SDI signals the MSP 217 set of Transmitter and Receiver provide capability for high speeds over long distances with high fidelity and very low loss using fiber optic cable. This extender is suitable for SDI signals conforming to SMPTE 424, SMPTE 292M and SMPTE 259M standards, and supports high bandwidth 10Gbps transmissions at resolutions up to 3G-SDI.



MSP 314-2 – DVI Extender

Extend 2K DVI signals via Fiber optic cable with the MSP314-2 set. This compact , transmitter receiver set plugs directly into DVI ports and is ideal for portable applications.

Integral LC ports allow connection to Fiber cables for transmission up to 300m with multi-mode Fiber or up to 2000m with single mode Fiber. The ultimate in compact signal extension, simply power MSP314-2 from supplied plug-packs.

Resolutions up to 2560x816@60Hz are supported with EDID capture available via push-pin.

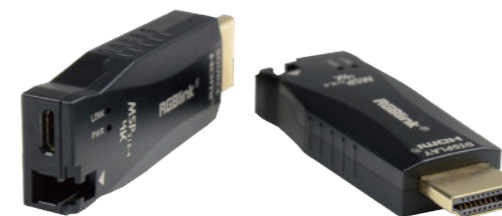


MSP 314-4 – DVI Extender

Extend DVI via Fiber optic cable with the MSP314-4 set. This compact, transmitter receiver set plug directly into DVI ports avoiding the need for additional rack space or shelving with MSP314-4 being ideal for portable applications.

MSP314-4 features integral LC ports – simply connect to a Fiber cable for transmission up to 2000m with single mode Fiber. Power MSP314-4 from supplied plug-packs.

Resolutions up to 3840x2160@30Hz are supported with EDID copy available via push-pin.



MSP 318-4 – HDMI Extender

Extend HDMI beyond usual limits with the MSP318-4 Fiber extender set. Plug the transmitter directly into an HDMI source, and connect to mode fiber optic cable. Similarly connect the receiver directly into an HDMI port on a display or downstream device. Just connect to low voltage power supply (included) at each end, MSP 318-4 is truly compact and ideal for portable applications or where there is restricted space.

MSP318-4 features integral LC ports – simply connect to a Fiber cable for transmission up to 300m .

HDCP compliant, resolutions up to 3840x2160@30Hz are supported with EDID management available via microUSB.

* MG product may be fitted into MSP Garage

STREAMING

CAPTURE

SWITCHER

STEAM/CODECS

CLOUD/DECODER

ASK Series
Collaboration Solutions

PRO AV

D Series
Digital Processors

X Series
Universal Processors

M Series
Mixing & Scaling

FLEX Series
Mixed Signal Matrix

Q Series
Multi-signal Matrix

1 Series
Switcher/Scalers

T Series
Control Consoles

Subito Series
LED Control Solutions

RMS Series
Monitoring Solutions

MSP Series
Video Tools/Extenders
Signal Converters
Signal Distributors

Accessories

Software

Reference

Contact

MSP

Signal Convertors



MSP 203 – SDI | HDMI

Up to 3G-SDI input signals are supported on this mini convertor, with an SDI Loop port also provided. Embedded audio may also be used else audio can be inserted as separate L/R analog or as digital AES / EBU inputs. Output to HDMI can be configured as HDMI 1.3 or DVI 1.0. DIP switches provide easy on device configuration, while remote configuration by USB is also available.

MG



MSP 204 – HDMI | SDI

Convert common HDMI signals to SDI (up to 3G-SDI). Audio can be embedded into the SDI output or muted. Audio out split is available via ¼" mono jack connectors for either analog L/R audio or AES/EBU digital audio. On board configuration via DIP switches is available as is remote configuration over USB.

MG



MSP 303 – SDI to HDMI Mini Converter

MSP 303 is a SDI to HDMI video converter supporting 1 x SDI input, 1 x HDMI output. SDI input resolutions available are 480i@60 | 576i | 720p@50/59.94/60 | 1080i@50/59.94/60 | 1080P@23.98/24/25/29.97/30/50/59.94/60. HDMI output resolutions supported are 720x480@60 | 720x576@60 | 1280x720@60 | 1920x1080@23.98/24/25/29.97/30/50/59.94/60.

MG



MSP 304 – HDMI to SDI Mini Converter

MSP 304 is a HDMI to SDI video converter with one HDMI input and one SDI output. HDMI connects to sources including 720x480@60 | 720x576@60 | 1280x720@60 | 1920x1080@23.98/24/25/29.97/30/50/59.94/60, while the SDI output supports 7480i@60 | 576i | 720p@50/59.94/60 | 1080i@50/59.94/60 | 1080p@23.98/24/25/29.97/30/50/59.94/60.

MG



MSP 305 – SDI-HDMI | HDMI-SDI Mini Converter

A 2-in-1 convertor, MSP305 offers both an SDI to HDMI convertor and independently an HDMI to SDI convertor in one compact enclosure. Always have the conversion you need. SDI up to 3G may be input along with HDMI signals up to 2K. MSP305 makes use of a new generation of low-power demand processing, offering lower heat generation and high stability in operation and rapid conversion.

MG



MSP 311 – HDMI 2.0 | Audio De-Embedder

Accepting HDMI signals up to 4K UHD, MSP311 provides separated de-embedded audio to 3.5mm stereo mini-jack and S/PDIF optical outputs allowing for the independent amplification or downstream mix of audio. Digital audio formats, including LPCM 2CH, Dolby TrueHD, Digital Plus, Atmos and DTS-HD Master Audio are supported, with audio sampling up to 192 KHz. Audio decoding selection is available from an on board switch. HDMI signals with HDR (High Dynamic Range) channels are supported and is HDCP 2.2 compliant. CEC pass-through is available too.

MG



MSP 312 – HDMI 2.0 | DisplayPort 1.2

Convert HDMI signals up to 4K to DisplayPort with the MSP312 format converter. Input/output resolutions up to 4K2K@ 50/60hz (YUV 4:4:4) with HDR (High Dynamic Range) are supported. MS312 is HDCP 2.2 compliant. Two MSP312 may be slotted together for convenience (and used in MSP Garage), and there is an optional rack/wall mounting kit.

MG



MSP Garage

Mount MSP range products in the convenient MSP Garage. At 2U, the garage allows secure rack mounting up to 10 devices including space for effective heat dissipation. An integral power supply eliminates the need for individual plug-packs, improving efficiency and reliability particularly where multiple MSP are used.

* MG product may be fitted into MSP Garage

STREAMING

- CAPTURE
- SWITCHER
- STEAM/CODECS
- CLOUD/DECODER
- ASK Series Collaboration Solutions

PRO AV

- D Series Digital Processors
- X Series Universal Processors
- M Series Mixing & Scaling
- FLEX Series Mixed Signal Matrix
- Q Series Multi-signal Matrix
- 1 Series Switcher/Scalers
- T Series Control Consoles
- Subito Series LED Control Solutions
- RMS Series Monitoring Solutions
- MSP Series Video Tools/Extenders Signal Convertors Signal Distributors

- Accessories
- Software
- Reference
- Contact

MSP

Signal Distributors



MSP 316H – HDMI 2.0 Distributor

Split HDMI 2.0 signals with this 1-in-2 out compact distributor. Signals up to 4K@60 (24 bit RGB/YUV 4:4:4) including HDR signals may be connected. MSP316H has a built-in balancer, clock and driver features, LPCM 7.1CH, Dolby TrueHD and DTS-HD video and audio are supported and there is intelligent EDID recognition with standard and TV modes. Combine MSP316H in slotted pairs and there is an optional rack/wall mounting kit.



MG

MSP 319 – 1x4 SDI Distributor

A high performance, high stability, high-definition SDI distributor, MSP 319 supports one SDI input and four outputs. SDI in SD-SDI, HD-SDI and 3G-SDI standards can all be used, including with embedded audio. Maximum resolution is 1080p.



DXP DP0102

DXP DP0102 is a DP 1.2 one input and two outputs video distributor, which can realize the distribution of 1 x DP1.2 input and 2 x DP1.2 output signals. It supports HDR Ycbr:4:4:4 technology and 4Kx2K /60Hz resolution. It can be connected and extended to increase the number of display transmissions. It supports the input EDID management with two EDID modes, users can set according to the needs of the application, complete the best quality image allocation without signal loss display.



DXP H0104

DXP H0104 is a HDMI2.0 one HDMI input and four HDMI outputs video distributor, to achieve 1 x HDMI2.0 input and 4 x HDMI2.0 output signals distribution. HDMI2.0 supports HDR Ycbr:4:4:4 technology and 4Kx2K /60Hz resolution, HDCP2.2, 8 bits /10 bits /12 bits /36 bits /36 bits deep color. It supports input EDID management with two EDID modes, users can set according to the needs of the application, complete the best quality image allocation without signal loss display.



DXP H0108

DXP H0108 is a HDMI2.0 one HDMI input and eight HDMI outputs video distributor, to achieve 1 x HDMI2.0 input and 8 x HDMI2.0 output signals distribution. HDMI2.0 supports HDR Ycbr:4:4:4 technology and 4Kx2K /60Hz resolution, HDCP2.2, 8 bits /10 bits /12 bits /36 bits /36 bits deep color. It supports input EDID management with two EDID modes, users can set according to the needs of the application, complete the best quality image allocation without signal loss display.



DXP H0404

DXP H0404 is a 4K HD HDMI 2.0 matrix switcher. It is composed of 4 HDMI inputs and 4 HDMI outputs, forming a 4x4 matrix switcher. Each HDMI output contains 1 SPDIF audio output. It supports HDMI2.0 standard, 4kx2k@60hz 4:4:4 resolution at maximum and is compatible with HDCP2.2. It is built in intelligent EDID management with 10 types of EDID data. The device control mode is flexible and diverse, including infrared control, serial control, network control (optional), panel control and flexible control to make it more convenient to use.



DXP H1010

DXP H1010 is a true 4K HDMI Matrix Switcher which allows to route any of 10 HDMI sources to any 10 HDMI displays! The DXP H1010 10x10 HDMI Matrix switch is a complete HDMI routing solution for True 4K HDMI systems. It supports resolution up to 4K 60Hz @ 4:4:4 and effortless control through Ethernet control, IR remote control, RS-232 and the front panel.

* MG product may be fitted into MSP Garage

STREAMING

- CAPTURE
- SWITCHER
- STEAM/CODECS
- CLOUD/DECODER
- ASK Series Collaboration Solutions

PRO AV

- D Series Digital Processors
- X Series Universal Processors
- M Series Mixing & Scaling
- FLEX Series Mixed Signal Matrix
- Q Series Multi-signal Matrix
- 1 Series Switcher/Scalers
- T Series Control Consoles
- Subito Series LED Control Solutions
- RMS Series Monitoring Solutions
- MSP Series Video Tools/Extenders Signal Convertors Signal Distributors

- Accessories
- Software
- Reference
- Contact