



## 082 Integrated Amplifier

Our Classic Line 082 integrated amplifier – like the 032 before it – descends from a long line of distinguished amplifiers including the 909, the 911, the 956 MK2 and the 036, which have received highest praise all over the world. The 082 closes a gap in our Classic Line and matches optimally with our CD Players, especially the 061.

## 082 Highlights

The 082 is a further development based on previous amplifying technologies and realises our ideal tonal conception: warm, substantial and vigorous sound which at the same time impresses with richness of detail. This is achieved with a circuit concept, which rests upon DC-coupled amplification stages. Due to its generously dimensioned power supply, the 082 is able to supply high currents continuously and therefore has control even over charge-critical loudspeakers.

Due to its numerous functions, the 082 is ideally suited for Stereo as well as for Home Theatre applications. It offers a Home Theatre ThruPut terminal, which routes signals past the preamplification stage directly to the power amp. This ThruPut can also be controlled via the Burmester Link interface.

### CONNECTIONS AND SETTINGS

The 082 offers a wide variety of connections. A PRE OUT allows the connection and combination of a second power amp (for example

036) or driving other listening zones with a centralized volume control. Intelligent control circuits with a simple controlling concept offer a versatile choice of programmable settings:

Balance control with BYPASS function  
Tone control for treble and bass with BYPASS function  
Wake-up volume: programmable power-up volume setting  
Adjustment of individual inputs between +/- 9dB  
Master and Link on/off function for Home Theatre applications  
Display on/off

### CONCEPT AND COMMITMENT TO QUALITY

The integrated amp 082 combines outstanding sound features with simple and logical controlling in a multifunctional device. The concept of logical controlling allows easy access to the various functions. The damping factor remains very high throughout

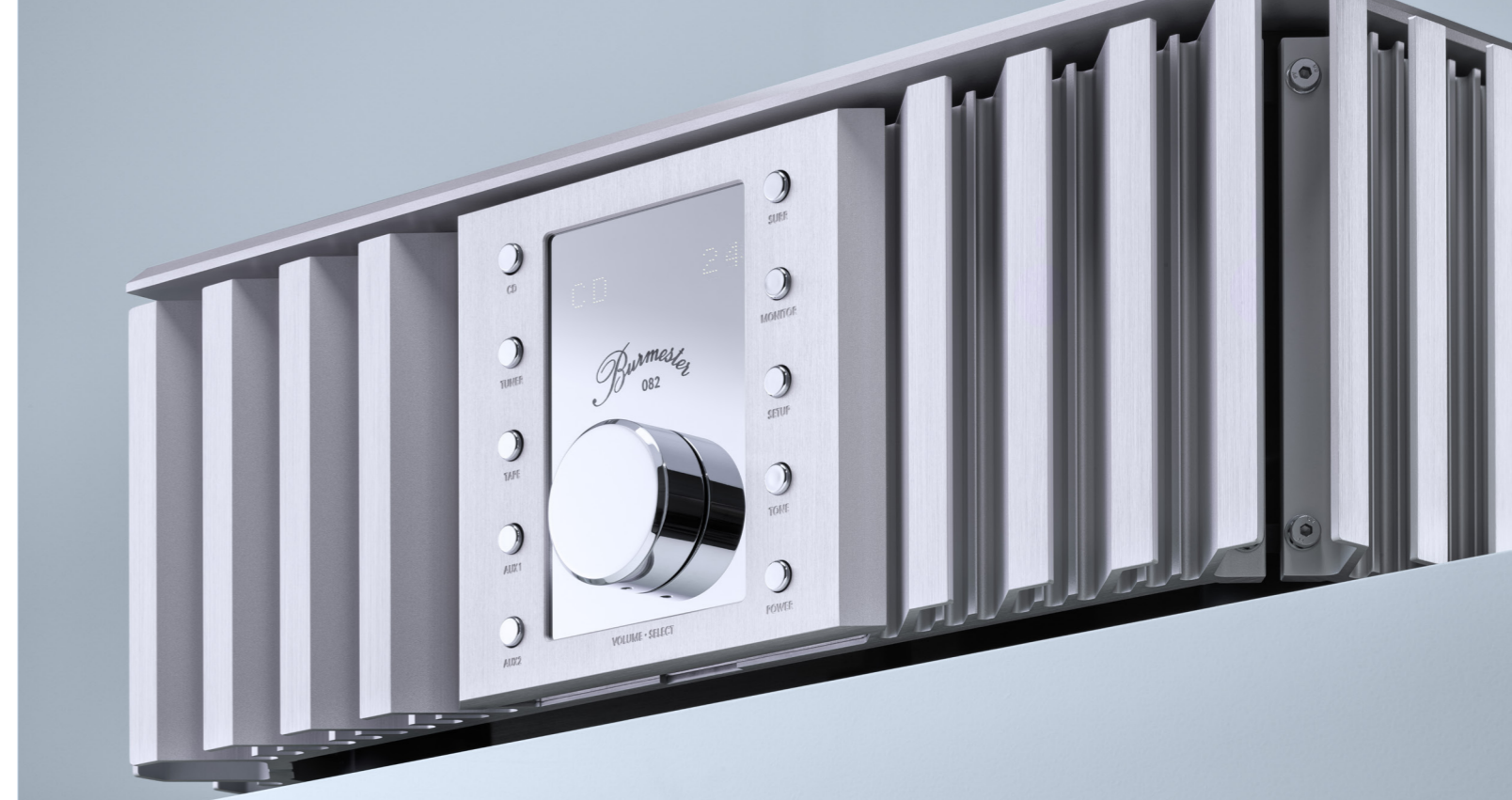
the full frequency and listening range even under full load. Like all Burmester amplifiers the 082 has to pass a number of stringent tests. Initially, critical components are measured, selected and paired with the aid of computers and only then combined to a subassembly. Each one of these modules is tested and checked against a reference setup. After the assembly has been completed each component is subjected to an automated test procedure with an audio analyzer, which consists of approx. 300 individual measurements. Each component has to conform exactly to the reference configuration. Following that, all units are being burnt in

at normal load non-stop for at least 5 days. After this demanding procedure every one has to pass the same battery of tests with the audio analyzer again. Only if the second set of measurements is identical to the first the unit will be released to final assembly. Only this unusually stringent test procedure ensures the outstanding reliability of Burmester components. Finally, each unit has to

pass a manual functions and listening test. After a final visual inspection the components are readied for shipping.

### DETAILS

The display and the controlling elements are situated on the front panel, which is milled out of massive aluminum. With the help of this constructional technique, the sensitive amplification stages are hermetically shielded from all digital interfering signals.



**FEATURES**

- Balanced preamplification stages
- Completely DC-coupled without distorting capacitors in the signal path
- High damping factor enables effortless control of any speaker over the full frequency range, even at high frequencies
- Stable at any load over the entire frequency range
- Massive binding posts for speaker cables (best performance with spade lugs!)
- A built-in protective circuit outside of the signal path monitors the 082 during operation with regard to overheating, DC offset and overloading.
- Oversized power supply with 82.000 µF filter capacity and a 450 VA toroidal transformer.
- Additional local filtering at the output stages with low inductive bypass capacitors.
- Inputs can be lined up separately
- Adjustable pre-sets: Input sensitivity, output level, wake-up volume
- Pre-amp output
- Architecture of the power amplification stages
- Extremely fast signal transfer
- High bandwidth
- Steady negative feedback over the entire audible range and beyond.
- Tone controls (can be switched off)
- Volume control in 60 steps with ultra precise volume actuator for perfect channel synchronisation
- Remote on/off: The 082 can be switched on/off or can be used to switch other components by a 10V DC trigger current.
- BurLink with RS-232 and USB
- Head phones jack at the rear panel
- Full remote control
- Remote control not included

**CONNECTIONS**

ANALOGUE-inputs	1. 4 x balanced (CD, Tuner, AUX, Surround) 2. 2 x unbalanced (AUX2, TAPE)
ANALOGUE-outputs	3. 1 x balanced (Preamp OUT) 4. 2 x unbalanced (Preamp OUT)
REMOTE IN/OUT	5. for remote switching of other BURMESTER components
BURLINK	6. for remote control via RS-232 and USB



**082**  
 CLASSIC LINE

**TECHNICAL SPECIFICATIONS**

Weight	25 kg (55.1 lbs)
Width	479.5 mm (18.9")
Height	179 mm (7.1")
Depth	490.9 mm (19.4")
Inputs	3 XLR, 2 RCA
Pre-Out	bal. + unbal.
Headphone jack	6.3 mm
Surround Thruput	yes
Remote controlled	yes
BurLink	yes
REMOTE INPUT / OUTPUT	1 / 1
Tone control (can be bypassed)	yes
Input Impedance XLR/RCA	38 kΩ / 23 kΩ
Input Sensitivity 1% THD + N, 4 Ω	550 mV
Stereo output per channel into 4 Ω	170 W
Frequency Response -3dB	< 10 Hz – 100 kHz
Signal-to-noise-ratio	> 97 dB
THD + N	0.008 %
Damping Factor	> 1,000
Special features	Tape monitor loop

Technical modifications reserved.

# Burmester Audiosysteme GmbH

Burmester Audiosysteme GmbH is one of the world's most renowned manufacturers in the field of high-end audio systems. The owner-managed company based in Berlin was founded in 1977 by Dieter Burmester. With a clear focus on home and automotive audio, Burmester maintains global collaborations with industry leaders in other industries (including: Mercedes-Benz, Porsche and the Königliche Porzellan Manufaktur Berlin, among others) and is a member of Meisterkreis Deutschland and the Initiative for German Manufactures.