

# BATCH CURE CHAMBER



RTT's Batch Cure Chambers are designed to accelerate the curing process in a wide range of applications on wood, metal and non-metallic substrates. After the coating application, parts are accumulated in the batch curing chamber to accelerate drying time of the coating and improve the ability to handle and process parts. Filtered, heated air is provided through the intake plenum by an air makeup unit (heat range up to 160°F) and recirculated (80%) through the exhaust plenum back into the chamber with the remaining air (20%) exhausted.

RTT's Batch Cure Chambers are available in standard configurations with hinged doors and solid backs but can also be designed as pass-through configuration with optional roll-up doors. All RTT batch cure chambers are provided with energy saving E-Light LED lighting.

## Features

- Heavy duty construction from 18-gauge, prime quality-galvanized steel. Panels and structural components are laser cut and precision bent to ensure alignment allowing for easy nut and bolt assembly
- Laser cut panels and structural components precision bent to ensure alignment, allowing for easy nut and bolt assembly
- Pre-hung windowed personnel access doors in heavy gauge galvanized steel frame for easy installation. Easily accessible 36" wide entry door
- ETL and UL 508a listed controls in NEMA 12 Enclosure - Variable Frequency Drive (VFD) to control booth exhaust fan for user-friendly booth pressure balancing
- Delivers filtered air evenly throughout, designed for optimal fuel efficiency. Mounted chamber prob measures and adjust internal temperature, minimizes variation
- Intake and exhaust filtration removes particulates from the air that negatively affect quality of finish
- Complies with applicable NFPA regulations.

## Options

- AutoSeal Roll Up oven door with patented energy saving sealing technology.
- Durable powder coated white option available.
- 2" Insulated panels up to 180° F (discharge air temperature)
- Roll-up, tri-fold or bi-fold doors available.
- Drive-through configuration.
- Height, width and depth can be custom designed to meet specific requirements



*Batch Cure Chamber Interior*



*Air Make-Up Unit Remote Control Panel*



*Optional AutoSeal door with patented energy saving technology.*

# BATCH CURE CHAMBER

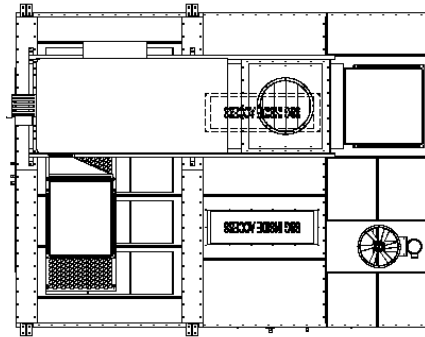


## Selecting a Size

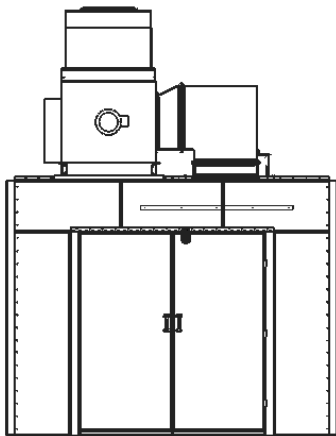
RTT provides three standard sized batch cure chambers that accommodate a wide range of curing needs. RTT can also offer custom sizes and configurations that can be engineered to meet site specific needs.

Model Number	Interior Dimensions			Access Doors	Nominal Door Opening				Qty Lights	80% Recirc CFM	Exhaust Fan		
	Width	Height	Depth		Width	Height	Qty	Type			CFM	Size	HP
BCC-12-08-16-P-SB	12	8	16	1	8	8	8	Solid	2	6,528	1,632	18	3/4
BCC-14-10-22-P-SB	14	10	22	1	10	10	1	Solid	2	9,520	2,380	18	3/4
BCC-16-16-34-P-SB	16	16	34	1	12	16	1	Solid	4	17,408	4,352	18	1.5

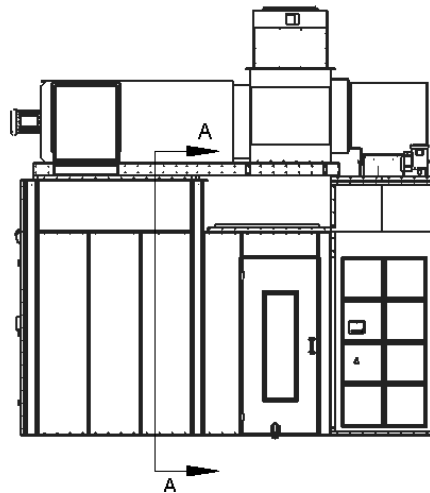
Alternative Configuration: Drive Through



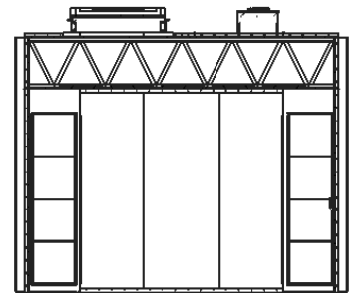
Plan View



Front View



Side View



Section A-A