



Wolverine® 2.0 Self-Propelled Robotic Electric Cutting System

Cut through challenging material rapidly and accurately with our Wolverine® 2.0 Self-Propelled Robotic Electric Cutting System. Its advanced controls and cutting power allow you to complete lateral reinstatements or pre-lining prep work in 6" to 24" diameter pipes.

Powerful & Precise Cutting

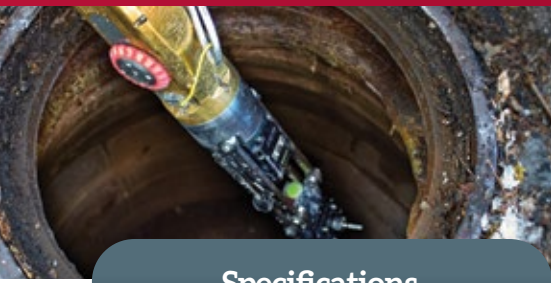
- All-wheel drive and compact profile to navigate challenging pipe conditions
- Infinitely adjustable speed and axis movement for precision cutting
- Stabilizing lift ensures balanced operation

Advanced Operator Control

- Fingertip control for outstanding operator ergonomics
- Dual joystick allows for accurate cutting head positioning
- Multiple wheel configurations to match pipe conditions

Maximum Uptime

- Quick truck set up and tear down
- In-the-pipe lens cleaning technology
- Easily accessible replacement parts



Specifications

Wolverine® 2.0 Self-Propelled Robotic Electric Cutting System

Advanced Technology

The Wolverine 2.0 Cutting System is compact, powerful and able to navigate and cut through challenging pipes. The vehicle-mounted system is designed and built at Aries US-based plant with stainless steel and brass construction and integrated electrical cabling.

Model CT2750

Overall System Specifications:

- Includes: Controller, Crawler, Camera, Reel

Desktop Controller

- CANbus technology
- Ergonomic fingertip controls
- Dual joystick
- Touch screen display
- Integrated DVR

Crawler

- Weight: 61 lbs.
- Length: 37"
- Operates in 6"-18" diameter pipes
- Compact profile
- All-wheel drive
- Multiple wheel options
- Suitable for use in water lines

Milling Motor

- Electric
- 1kw@7000-12000 RPM
- Adjustable speed setting
- Field repairable

Options

- 24" diameter pipe kit fits existing cutter body so only one cutter body needed for 6" to 24" pipes
- 4th axis allows you to roll the tool bit forward for challenging cutting

Camera

- Fixed lens with field replaceable glass
- Built-in lens wiper and scraper for in-the-pipe lens cleaning
- Adjustable LED light ring
- Homing feature

Cable Reel

- Cable length: 850'
- Diameter: 3/4"
- Coax video
- Material: Kevlar®, Nylon, Hytrel® and Polyurethane (red)
- Strength: 2,000 lbs.
- Reel weight: 400 lbs.

DESIGNED & BUILT
BY ARIES INDUSTRIES



ARIES

Corporate Office

550 Elizabeth Street
Waukesha, WI 53186
Toll Free: 800-234-7205
Phone: 262-896-7205
Fax: 262-896-7099

Western Regional

5748 E. Shields Avenue,
Suite 101
Fresno, CA 93727
Toll Free: 800-671-0383
Phone: 559-291-0383
Fax: 559-291-0463

Southern Regional

Atlanta, GA
Toll Free: 800-234-7205
Fax: 262-896-7099

Aries Canada Ltd.

95 Whitmore Road, Unit 1
Vaughan, Ontario
Canada, L4L 6E2
Toll Free: 877-730-7010
Phone: 905-265-2279
Fax: 905-265-2299

raising the bar
UNDERGROUND

Sourcewell

Awarded Contract

Contract # 120721-ARS