

# RL1600 Series

Cast Iron Weigh Modules, Rice Lake Weighing Systems



Picture is a representation of actual product.

## Complete Kit Includes

- Three or four RL1600 cast iron compression mounts with RL75016 environmentally protected double-ended shear beam load cells
- One JB4SS NEMA Type 4X stainless steel signal trim junction box
- 25 ft of hostile environment EL147HE SURVIVOR® load cell cable

## Standard Features

- Capacities (per module): 1,000 to 25,000 lb
- Cast iron construction
- Self-checking easy-to-use design allows module to be bolted directly to tank leg without requiring additional mounting plates or load buttons
- Double-ended beam design, center loaded
- Compatible with VPG® Sensortronics 65016 load cells, capacities (per module): 1,000 to 25,000 lb

## Applications

- Medium- to heavy-capacity tanks, bins and hoppers
- Bulk material management

## Order Information

Load Rating (Per Module)	Part #	Price
<b>Single Module (Does NOT Include Load Cell)</b>		
1,000 lb to 5,000 lb	<b>17964</b>	\$185.00
10,000 lb to 25,000 lb	<b>17965</b>	\$357.00
<b>3-Module Kit</b>		
1,000 lb	<b>25663</b>	\$2,285.00
1,500 lb	<b>25664</b>	\$2,285.00
2,000 lb	<b>25665</b>	\$2,285.00
2,500 lb	<b>25666</b>	\$2,285.00
3,000 lb	<b>25667</b>	\$2,285.00
5,000 lb	<b>25668</b>	\$2,285.00
10,000 lb	<b>25669</b>	\$3,000.00
15,000 lb	<b>25671</b>	\$3,000.00
20,000 lb	<b>25672</b>	\$3,000.00
25,000 lb	<b>25674</b>	\$3,000.00
<b>4-Module Kit</b>		
1,000 lb	<b>25675</b>	\$2,925.00
1,500 lb	<b>25676</b>	\$2,925.00
2,000 lb	<b>25677</b>	\$2,925.00
2,500 lb	<b>25678</b>	\$2,925.00
3,000 lb	<b>25679</b>	\$2,925.00
5,000 lb	<b>25680</b>	\$2,925.00
10,000 lb	<b>25681</b>	\$3,875.00
15,000 lb	<b>25682</b>	\$3,875.00
20,000 lb	<b>25683</b>	\$3,875.00
25,000 lb	<b>25684</b>	\$3,875.00

## VPG Sensortronics 65016 Order Information

Load Rating (Per Module)	Part #	Price
<b>3-Module Kit</b>		
1,000 lb	<b>25685</b>	\$2,685.00
1,500 lb	<b>25686</b>	\$2,685.00
2,500 lb	<b>25688</b>	\$2,685.00
5,000 lb	<b>25690</b>	\$2,685.00
10,000 lb	<b>25691</b>	\$3,400.00
15,000 lb	<b>25692</b>	\$3,400.00
20,000 lb	<b>25693</b>	\$3,400.00
25,000 lb	<b>25694</b>	\$3,400.00
<b>4-Module Kit</b>		
1,000 lb	<b>25695</b>	\$3,485.00
1,500 lb	<b>25696</b>	\$3,485.00
2,500 lb	<b>25698</b>	\$3,485.00
5,000 lb	<b>25700</b>	\$3,485.00
10,000 lb	<b>25701</b>	\$4,465.00
15,000 lb	<b>25702</b>	\$4,465.00
20,000 lb	<b>25703</b>	\$4,465.00
25,000 lb	<b>25704</b>	\$4,465.00
<b>Dummy Load Cells</b>		
1,000 lb to 5,000 lb	<b>18236</b>	\$26.00
10,000 lb to 25,000 lb	<b>18237</b>	\$42.00

## Shims, Mild Steel

	Part #	Price
<b>1,000 lb to 5,000 lb</b>		
0.0625 in	<b>150844</b>	\$2.00
0.125 in	<b>150845</b>	\$3.00
0.250 in	<b>150846</b>	\$3.00
<b>10,000 lb to 25,000 lb</b>		
0.0625 in	<b>150847</b>	\$5.00
0.125 in	<b>150848</b>	\$7.50
0.250 in	<b>150849</b>	\$8.00

WEIGH MODULES

# RL1600 Series

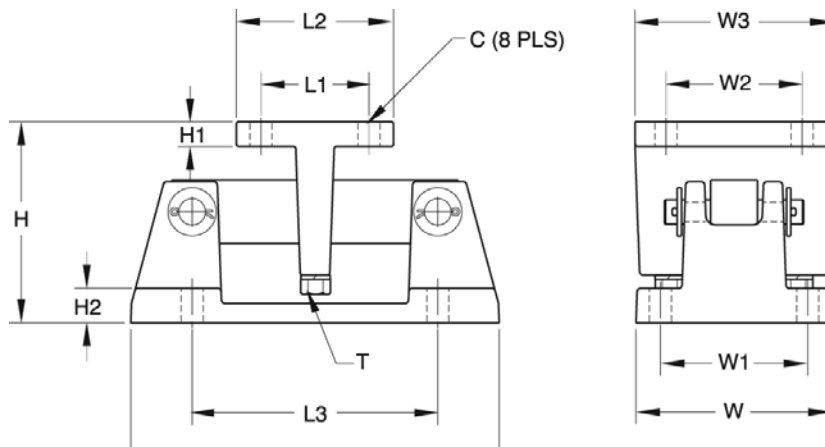
Cast Iron Weigh Modules, Rice Lake Weighing Systems

## Load Cell Upgrade

RL75016SS Stainless Steel Load Cells	
Three mount kits, 1,000 lb to 25,000 lb	\$75.00 added to list price
Four mount kits, 1,000 lb to 25,000 lb	\$100.00 added to list price
RL75016WHE Stainless Steel Hermetic Load Cells	
Three mount kits 1,000 lb to 5,000 lb	\$540.00, 10 k-25 k \$588.00 added to list price
Four mount kits 1,000 lb to 5,000 lb	\$720.00, 10 k-25 k \$784.00 added to list price
<i>Contact factory for a 50,000 lb to 75,000 lb upgrade</i>	

## Dimensions

Rated Capacity	C	H	H1	H2	L	L1	L2	L3	T	W	W1	W2	W3
lb/in													
1,000 to 5,000	0.56	5.00	0.50	0.50	9.31	2.75	4.00	6.25	1/2-13 UNC	5.00	3.75	2.75	4.00
10,000 to 25,000	0.78	7.89	0.75	0.75	12.00	6.00	8.00	7.50	3/4-10 UNC	8.00	6.00	6.00	8.00



WEIGH MODULES