

RL1800 Series

Mild Steel/Stainless Steel Weigh Modules

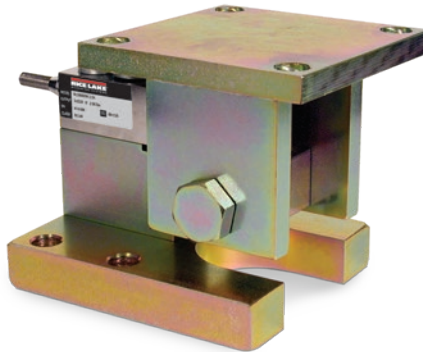


Picture is a representation of actual product.

Load Cell Approvals



Except 250lb



Complete Kit Includes

- Three or four RL1800 mild steel or stainless steel compression mounts with NTEP Certified RL32018 single-ended beam load cells, RL32018S used in stainless steel
- One JB4SS NEMA Type 4X stainless steel signal trim junction box
- 25 ft of hostile environment EL147HE SURVIVOR® load cell cable

Standard Features

- Capacities (per module): 250 to 10,000 lb
- NTEP Certified cells in 500 to 10,000 lb capacities, except 3,000 lb
- Zinc plated mild steel/stainless steel construction
- Center-pivoted, tension loading design
- Self-checking, multi-directional movement
- Load is suspended on high-strength bolt instead of wire rope
- Design incorporates spherical washers for self centering

Applications

- Conveyors
- Medium-capacity tanks and hoppers
- Mixers and blenders
- Process measurement and control

WEIGH MODULES

Mild Steel Order Information

Load Rating (Per Module)	Part #	Price
Single Module (Does NOT Include Load Cell)		
250 lb to 5,000 lb SE	17817	\$399.00
5,000 lb LE to 10,000 lb	17819	\$428.00
3-Module Kit		
250 lb*	18075	\$2,350.00
500 lb	18076	\$2,350.00
1,000 lb	18077	\$2,350.00
2,000 lb	18078	\$2,350.00
2,500 lb	18079	\$2,350.00
3,000 lb	18080	\$2,350.00
4,000 lb	18081	\$2,350.00
5,000 lb SE	18082	\$2,350.00
5,000 lb LE	18083	\$2,700.00
10,000 lb	18084	\$2,700.00
4-Module Kit		
250 lb*	18085	\$3,050.00
500 lb	18086	\$3,050.00
1,000 lb	18087	\$3,050.00
2,000 lb	18088	\$3,050.00
2,500 lb	18089	\$3,050.00
3,000 lb	18090	\$3,050.00
4,000 lb	18091	\$3,050.00
5,000 lb SE	18092	\$3,050.00
5,000 lb LE	18093	\$3,500.00
10,000 lb	18094	\$3,500.00

SE=Small envelope; LE=Large envelope

* Non-NTEP

Stainless Steel Order Information

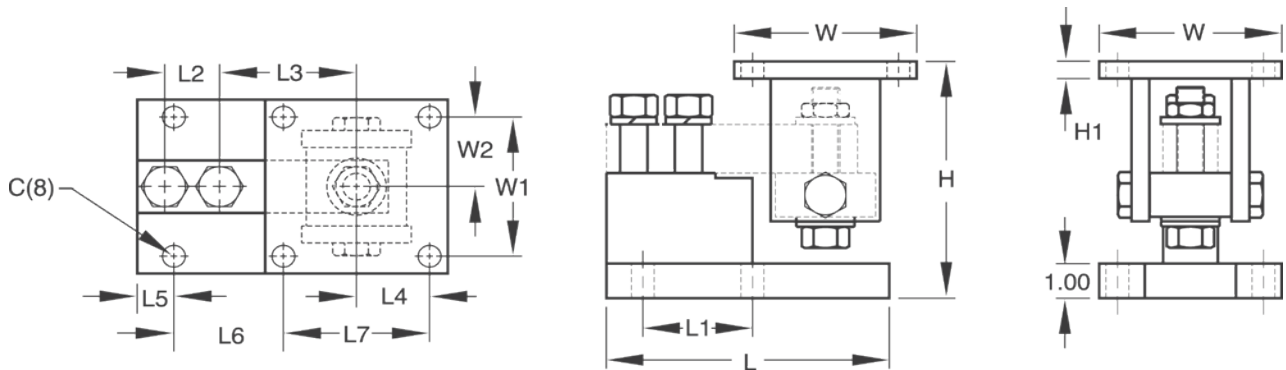
Load Rating (Per Module)	Part #	Price
Single Module (Does NOT Include Load Cell)		
250 lb to 4,000 lb	17818	\$640.00
5,000 lb to 10,000 lb	17820	\$675.00
3-Module Kit		
1,000 lb	18095	\$3,190.00
2,000 lb	18096	\$3,190.00
2,500 lb	18097	\$3,190.00
4,000 lb	18099	\$3,190.00
5,000 lb LE	18100	\$3,445.00
10,000 lb	18101	\$3,445.00
4-Module Kit		
1,000 lb	18102	\$4,250.00
2,000 lb	18103	\$4,250.00
2,500 lb	18104	\$4,250.00
4,000 lb	18106	\$4,250.00
5,000 lb LE	18107	\$4,595.00
10,000 lb	18108	\$4,595.00
Dummy Cell		
Dummy load cell 1 k to 5 k SE	22980	\$53.00

RL1800 Series

Mild Steel/Stainless Steel Weigh Modules

Dimensions

Rated Capacity	C	H Min/Max	H1	L	L1	L2	L3	L4	L5	L6	L7	W	W1	W2
Mild Steel Construction														
lb/in														
250 to 5,000SE	0.62	5.25/5.56	0.50	6.00	2.00	1.00	3.00	2.00	0.68	1.94	4.00	5.00	4.00	2.00
5,000LE to 10,000	0.62	6.12/6.62	0.50	7.75	3.00	1.50	3.75	2.00	1.03	2.97	4.00	5.00	4.00	2.00
Stainless Steel Construction														
lb/in														
1,000 to 4,000	0.62	5.25/5.56	0.50	6.00	2.00	1.00	3.00	2.00	0.68	1.94	4.00	5.00	4.00	2.00
5,000 to 10,000	0.62	6.12/6.62	0.50	7.75	3.00	1.50	3.75	2.00	1.03	2.97	4.00	5.00	4.00	2.00



WEIGH MODULES