

RoboMAX 75HP



ENERGREEN[®] America
Professional Machines



REMOTE
CONTROLLED
TOOL
CARRIER

55° SLOPE



REMOTE CONTROLLED
TOOL CARRIER



ROBOMAX

*Robo***MAX**
75HP

Powerful Remote Controlled Tool Carrier

RoboMAX is a powerful remote-controlled tool-carrier that can easily work in different activities and branches. The standard attachment includes two hydraulic double-effect functions.

Designed to satisfy the most different needs, RoboMAX can be defined as a multifunction machine, with power and performances that can be easily compared to a traditional tractor with several accessories.

The main features that make the difference about this machine among all other robots are: power, reliability, strenghtness, high performances, versatility and a 75 HP diesel engine.



WORKING RANGE 492 FT

STRENGTHS

RoboMAX
75HP

STRENGTHS



Safety and Comfort

- Radio controlled machine
- Operator recommended safety zone
- Emergency button on the remote control
- Excellent maneuverability
- Easy to use and carry



Working on steep slopes

- Special design of the track
- Excellent traction in all directions up to 55°
- Special oil sump
- Low center of gravity



Multifunction

- Multiple tools available
- Road and river maintenance
- Vegetation and forestry maintenance
- Agriculture and industry service
- Winter road service



Productivity

- Engine 75 HP EPA Tier 4f
- Quick change of attachment
- Fast execution of work
- Maneuverability on any surface





OPERATOR
IN SAFETY
ZONE

REMOTE CONTROLLED

RoboMAX is Safety

RoboMAX is a remote controlled machine, able to be operated safely in dangerous areas, with slopes up to 55° in any direction.

The exceptional stability of the machine is given by a low center of gravity, a special oil sump and rubber or steel tracks for excellent traction.

The safety of the operator is one of our goals: the use of the remote control with up to 492 ft range avoids several work risks to the operator such as noise, vibrations, exposure to exhaust materials, etc.

RoboMAX 75HP

THE REMOTE CONTROL IS LIGHTWEIGHT, INTUITIVE, AND EASY TO MASTER

EMERGENCY
BUTTON



492 FT

RoboMAX 75HP



QUALITY COMPONENTS ✓

RoboMAX is built with an ultra-resistant steel to ensure a long lifetime; all the components are tested and certified to ensure the maximum reliability and safety.

- Engine tested by the producer with a remarkable reputation for reliability.
- Remote-control technology developed by a team of specialized experts.
- Powerful and efficient engine, ideal for steep slopes.
- Engine crankcase designed to ensure the oil, even on steep slopes.
- Double roll bar integrated into the frame to ensure protection of the machine.
- Independent cooling system of the hydraulic system to optimize performances.
- Flat bottom frame to protect the under carriage and prevent the entrance of cutted vegetation to protect all the components.

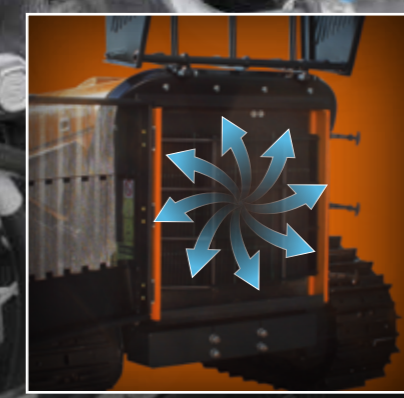
Born to satisfy the most difficult needs, RoboMAX can easily be defined as a remote-controlled grass cutting machine with power and performances comparable to a classic grass cutting arm for a tractor. These main features distinguish this machine from any other robot used for grass cutting: **power, reliability, strength and high efficiency.**



YANMAR ENGINE 75 HP

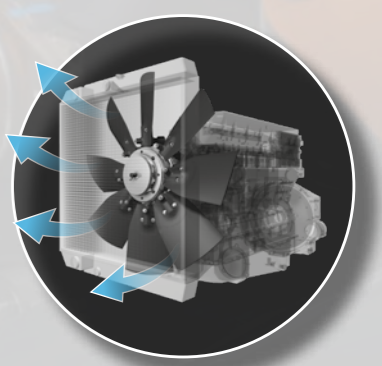


THE BEST COMPONENTS



FREXXAIRE® SELF-CLEANING REVERSIBLE FAN

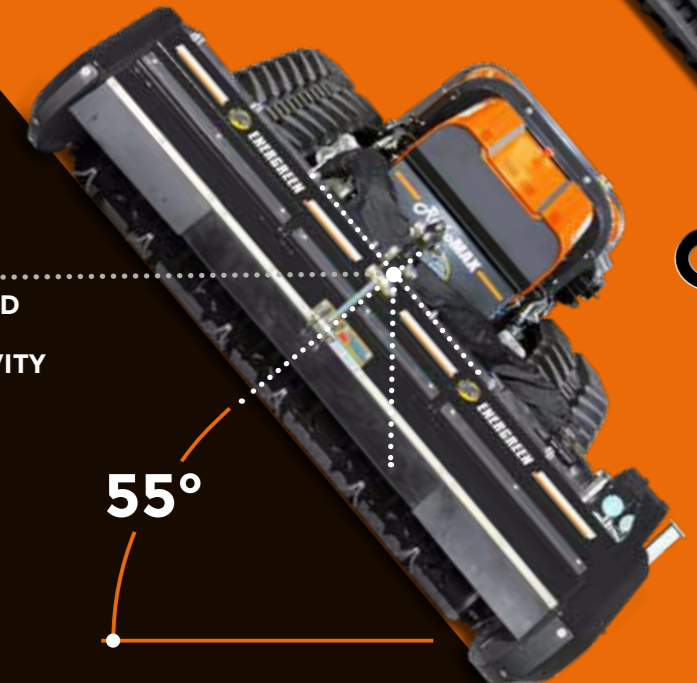
RoboMAX is equipped with the self-cleaning reversible fan FLEXXAIRE® to increase productivity and fuel saving.



WORK ON SLOPES



LOWERED CENTER OF GRAVITY



LOWERED CENTER OF GRAVITY

55°

RoboMAX

Working on steep slopes up to 55°

The special design of the track and its tensioning system makes **RoboMAX** a safe machine for working on slopes up to 55° in any direction: hill and mountain areas, slopes, embankments, and in all those places where the adherence is very low and where a machine for high slopes is required.



MULTIFUNCTION



The suitable tool for every work

RoboMAX is a technologically advanced machine that responds to the current needs of safety and performances required by the market.

Energreen wants to change the traditional concept of the grass cutting, creating a remote-controlled machine, that can mow where previously there was only the possibility to use hand brush cutters; this represents a new frontier of use, where the safety of the operator is put first.

RoboMAX is certainly faster than the traditional way of mowing; it allows to optimize the work in the most different working environments.



ATTACHMENTS



RoboMAX
75HP



HEAD 180

GRASS HEAD

Strong and reliable grass head, with a frame made of high resistance Strenx® steel, wear-proof and shock-proof. The head is the ideal solution to cut grass and shrubs up to a diameter of 1.18". It can be equipped with a Y flails rotor with adjustable height of cut.

TECHNICAL DATA

| | |
|------------------|----------|
| Working width | 69 in |
| Maximum width | 80 in |
| Cutting diameter | 1.18 in |
| Speed rotor | 2300 rpm |
| No. of flails | 72 |
| Weight | 1058 lbs |



FORESTRY 150 H

FORESTRY HEAD WITH SWINGING HAMMERS

Strong and reliable forestry head, with a frame made of high resistance Strenx® steel, wear-proof and shock-proof. It is the ideal solution to cut grass and shrubs up to a diameter of 3.15". It is equipped with a rotor with swinging hammers.

TECHNICAL DATA

| | |
|------------------|----------|
| Working width | 59 in |
| Maximum width | 71 in |
| Cutting diameter | 3.15 in |
| Speed rotor | 2200 rpm |
| No. of hammer | 20 |
| Weight | 1796 lbs |



FORESTRY 150 T

FORESTRY HEAD WITH FIXED TEETH

Strong and reliable forestry head, with a frame made of high resistance Strenx® steel, wear-proof and shock-proof. It is the ideal solution to cut grass and shrubs up to a diameter of 4.72". It is equipped with a rotor with fixed teeth.

TECHNICAL DATA

| | |
|------------------|----------|
| Working width | 58 in |
| Maximum width | 71 in |
| Cutting diameter | 4.72 in |
| Speed rotor | 2200 rpm |
| No. of teeth | 42 |
| Weight | 1796 lbs |

Technical and construction specifications may be subject to change without prior notice



BUCKET

TIPPING BUCKET HIGH

Robust tool, essential for the loading and handling of materials in narrow or dangerous environments. The use of two hydraulic cylinders ensure the unloading of the product at a height of 28 in.

TECHNICAL DATA

| | |
|-------------------------|-----------------------|
| Working width | 65 in |
| Max. tipping height | 28 in |
| Load that can be lifted | 1985 lbs |
| Bucket volume | 10.59 ft ³ |
| Pressure | 2610 PSI |
| Weight | 595 lbs |



PRUNER DISCS

DUAL BLADE HEDGE TRIMMER

This tool is suitable for pruning vineyards, olive trees, hedges, or trees in general. It can reach a cutting length of 130". The cutting disks are made of stainless steel to ensure a long lifetime.

TECHNICAL DATA

| | |
|----------------------|---------|
| No. flails | 5 + 3 |
| Vertical cut | 79 in |
| Horizontal cut | 51 in |
| Flails diameter | 16 in |
| Extension height | 27 in |
| Horizontal extension | 27 in |
| Weight | 750 lbs |



SPRAYER EG400

This sprayer is useful for antiparasitic or fungicide treatments to avoid diseases and molds. It can be equipped with the weeding bar and a reel with handgun.

TECHNICAL DATA

| | |
|------------|---------------------------|
| Capacity | 105 gal |
| Fan | 23 in |
| Power | 20 HP |
| Flow | 25 gal/min |
| Air volume | 925244 ft ³ /h |
| Weight | 1543 lbs |



BIO-SHREDDER

Powerful chipper designed to shred group of branches, trunks, or vegetal waste with a diameter up to 4". The chopped material can be ejected directly on the soil or collected for the transport.

TECHNICAL DATA

| | |
|----------------------|-------------|
| Max. cross-section | 4 in |
| Output | 353 sq ft/h |
| Hopper opening | 9 x 12 in |
| No. blades / hammers | 2 / 20 |
| Power | 20 HP |
| Weight | 1014 lbs |



STONE CRUSHERS

Stone crusher ideal to use in orchards or vineyards, and for roadwork. It can also be used to create firebreak trenches in the woods, destroy stumps, make trekking routes, level ski slopes, golf courses, etc.

TECHNICAL DATA

| | |
|-----------------------------|----------|
| Rotor width | 17 in |
| No. hammer | 4 |
| Pressure | 4206 PSI |
| Hydraulic drive with piston | |
| Belt transmission | |
| Weight | 1031 lbs |



WINCH

Rear hydraulic winch, useful for towing the machine in case of need. Has a towing capacity of 3086 lbs, which added to the power of the machine increases its strength to ensure maximum reliability.

TECHNICAL DATA

| | |
|--------------------------------|-----------|
| Pulling force | 3086 lbs |
| Hydraulic flow | 5 gal/min |
| Length of drum rope | 105 ft |
| Rope diameter | 0.3 in |
| Towing pressure | 2610 PSI |
| Weight (complete with support) | 397 lbs |

* Complete with support, ballasts excluding

Technical and construction specifications may be subject to change without prior notice



FORESTRY WINCH

Professional forestry winch, it's the ideal attachments for moving trunks and plants on steep slopes or in narrow areas.

COMING SOON



STUMP GRINDER

With an oscillating arch movement, this powerful stump grinder can trill an entire stump or trunk. In this way it is possible to renovate areas as a garden or a field even on slopes.

COMING SOON



SNOW BLOWER

Blower designed to remove the snow, both soft and frozen, from roads, sidewalks, squares, car parks, ramps, and narrow or hardly accessible places. It is equipped with a deflector for an adjustable ejection.

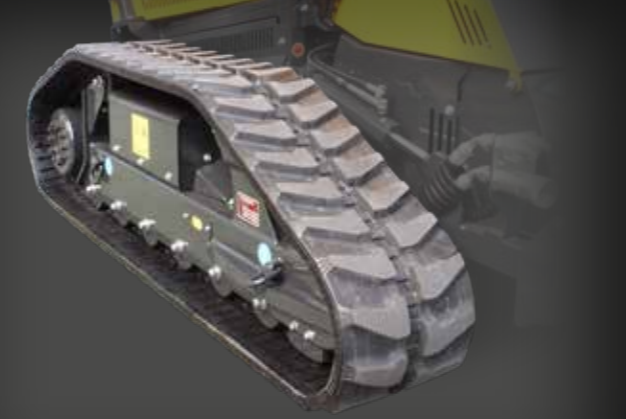
COMING SOON



Strong Radiator Protection

RoboMAX can be equipped with a rear steel protection for the radiator (optional). It is a solid structure made up of metal tubes and plates designed to limit damages in case of collision. The structure is handy and easy to open, making everyday maintenance much easier, thanks also to the possibility of lifting it and have an easy access to the radiator.





OPTION A

RUBBER TRACKS

IDEAL TRACKS FOR DELICATE SURFACES

- 14" of width
- Excellent adherence to the ground
- Work on sloping areas up to 40°

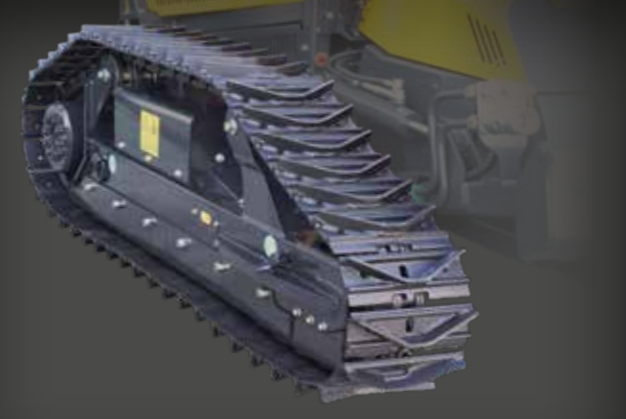


OPTION B

SUPER RUBBER TRACKS

IDEAL TRACKS FOR FORESTRY WORKS OR AREAS WITH DENSE VEGETATION

- 14" of width
- Wide supporting surface with consequent less weight per sq inch
- Work on sloping areas up to 55°



OPTION C

STEEL TRACKS

IDEAL TRACKS FOR ROCKY OR WET SURFACES

- 12" of width
- Excellent adherence to the ground
- Work on sloping areas up to 55°



Cogwheel of the tracks in tempered steel



Adaptor with hydraulic motor



Track tensioner with safety spring

TECHNICAL DATA



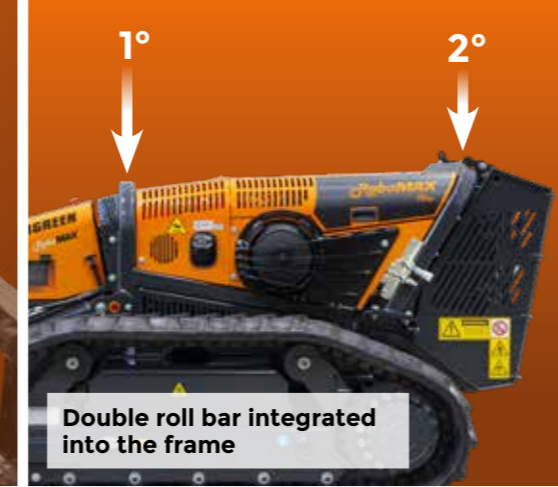
Command board with 4.3" color display



Anti-theft fuel cap



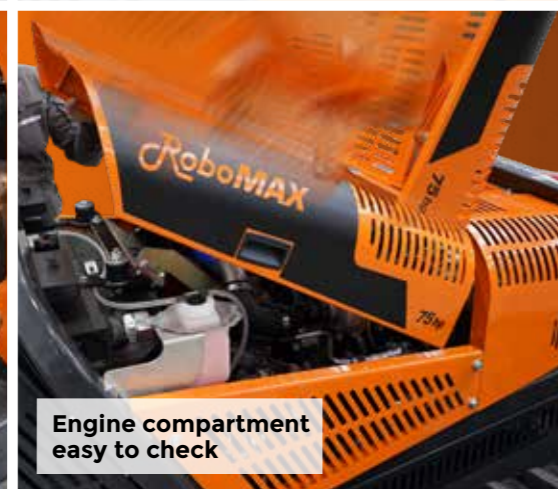
Reversible fan FLEXXAIRE®



Double roll bar integrated into the frame



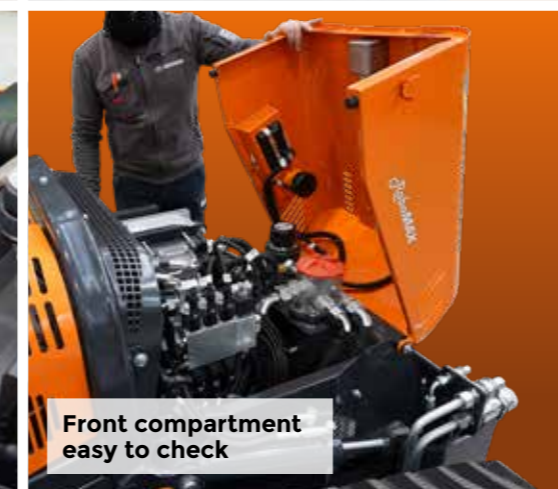
Yanmar engine 75 HP EPA Tier 4f



Engine compartment easy to check



Air filter easy to check



Front compartment easy to check



Mechanic coupling lifter with reinforced plate



Quick hydraulic couplings



Steel air filter protection



Led lights



| RoboMAX | |
|-----------------------------------|--------------------|
| Maximum gradient | 55° |
| Transmission | Hydrostatic |
| Low range speed | 0 - 1.55 mph |
| High range speed | 0 - 3.40 mph |
| Machine weight without attachment | 5445* / 5820** lbs |

| ENGINE | |
|--------------------|-----------------------------|
| Brand | Yanmar |
| Type | 4 Cylinders Diesel |
| Power | 75 HP (55 kW) - EPA Tier 4f |
| Fuel tank capacity | 16 gal |
| Working RPM | 2500 rpm |

| REMOTE CONTROL | |
|-----------------------|--------------|
| Brand | Autec |
| Radio frequency | 915 Mhz |
| Working range | 492 ft |
| Joystick | Proportional |
| Battery (Li-Ion) | Rechargeable |

REMOTE CONTROL CASE
standard



Technical and construction specifications may be subject to change without prior notice.

ACCESSORIES



RoboMAX

f y i in ENERGREENAMERICA.COM



REMOTE CONTROLLED TOOL CARRIER



Local dealership



ENERGREEN America · 227 Trade Ct. · Aiken · SC 29805 · USA
Phone 470 989 2600 · info@energgreenamerica.com
www.energgreenamerica.com

PROFESSIONAL MACHINES AND ATTACHMENTS



ELSDP1300105-0124 - © Energgreen America 2024 - All rights reserved
Photo, technical and constructive characteristics subjected to modification without reporting requirement.