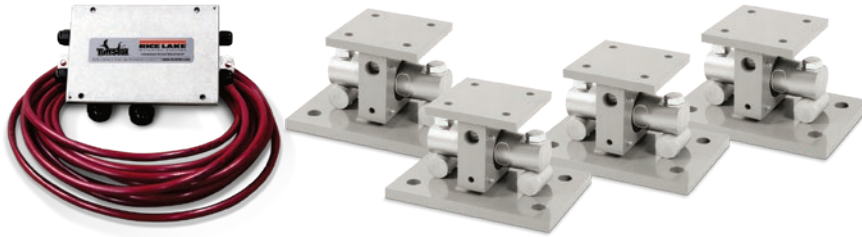


# EZ Mount 1 SS with RL72020SS

Stainless Steel Weigh Modules, Rice Lake Weighing Systems

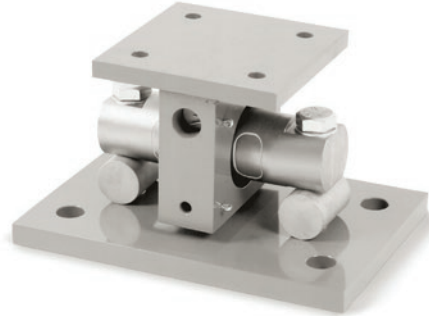


Picture is a representation of actual product.

## Load Cell Approvals



NTEP Excluding  
5K and 150K



## Complete Kit Includes

- Three or four EZ Mount 1 stainless steel compression mounts with RL72020SS stainless steel double-ended shear beam load cells
- One JB4SS NEMA Type 4X stainless steel signal trim junction box
- 25 ft of our hostile environment EL147HE SURVIVOR® load cell cable

## Standard Features

- Capacities (per module): 5,000 to 150,000 lb
- NTEP Certified load cells (except for 5 k and 150 k)
- Stainless steel construction
- Unique sliding pin design compensates for thermal expansion/contraction
- Self-checking
- Easy load cell replacement
- Simplified design allows bolting directly to tank and floor
- Center-loaded double-ended shear beam design
- Low-profile design
- Compatible with VPG® Revere 9103 load cell

## Applications

- Medium- to heavy-capacity tank and hopper weighing applications

## Order Information

Load Rating (Per Module)	Part #	Price
<b>Single Module (Does NOT Include Load Cell)</b>		
5,000 lb to 20,000 lb	<b>17943</b>	\$885.00
30,000 lb to 60,000 lb	<b>17944</b>	\$2,450.00
100,000 lb	<b>17945</b>	\$4,480.00
150,000 lb	<b>29011</b>	\$4,480.00
<b>3-Module Kit</b>		
5,000 lb*	<b>208914</b>	\$5,290.00
10,000 lb	<b>208917</b>	\$5,290.00
20,000 lb	<b>208918</b>	\$5,290.00
30,000 lb	<b>208919</b>	\$10,640.00
40,000 lb	<b>208920</b>	\$10,640.00
50,000 lb	<b>208921</b>	\$10,640.00
60,000 lb	<b>208922</b>	\$10,640.00
100,000 lb	<b>208923</b>	\$19,570.00
150,000 lb*	<b>208924</b>	\$19,570.00

\* Non-NTEP Certified

Load Rating (Per Module)	Part #	Price
<b>4-Module Kit</b>		
5,000 lb*	<b>208925</b>	\$6,865.00
10,000 lb	<b>208926</b>	\$6,865.00
20,000 lb	<b>208927</b>	\$6,865.00
30,000 lb	<b>208928</b>	\$14,010.00
40,000 lb	<b>208929</b>	\$14,010.00
50,000 lb	<b>208930</b>	\$14,010.00
60,000 lb	<b>208931</b>	\$14,010.00
100,000 lb	<b>208932</b>	\$26,030.00
150,000 lb*	<b>208933</b>	\$26,030.00
<b>Dummy Load Cells (Mild Steel)</b>		
5,000 lb to 20,000 lb	<b>33749</b>	\$90.00
30,000 lb to 60,000 lb	<b>74016</b>	\$122.00
100,000 lb	<b>94175</b>	\$265.00
150,000 lb	<b>158715</b>	\$265.00
<b>Grounding Kit</b>		
5,000 lb-60,000 lb	<b>126419</b>	\$21.00

Includes ground strap and mounting hardware per mount

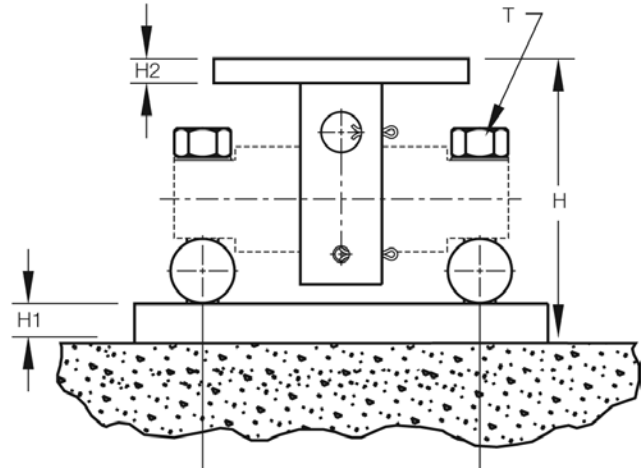
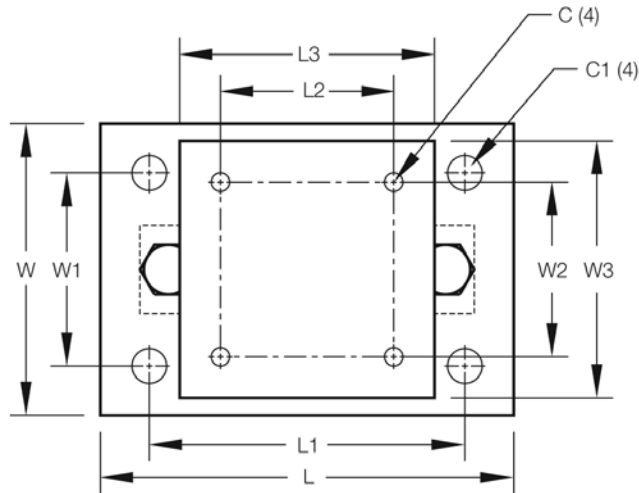
WEIGH MODULES

# EZ Mount 1 SS with RL72020SS

Stainless Steel Weigh Modules, Rice Lake Weighing Systems

## Dimensions

Rated Capacity	C	C1	H	H1	H2	L	L1	L2	L3	L4	T	W	W1	W2	W3
5,000 to 20,000	0.56	1.06	5.31	0.75	0.50	11.00	8.00	3.00	6.00	6.87	5/8-18 UNF	7.50	4.00	3.00	6.00
30,000 to 60,000	0.68	1.19	8.43	1.00	0.75	15.00	11.50	5.12	8.00	8.50	1-14 UNS	10.00	6.00	5.12	8.00
100,000 to 150,000	0.81	1.38	10.37	1.25	1.25	18.00	14.00	7.50	10.00	9.50	1-14 UNS	12.00	9.00	7.50	10.00



WEIGH MODULES