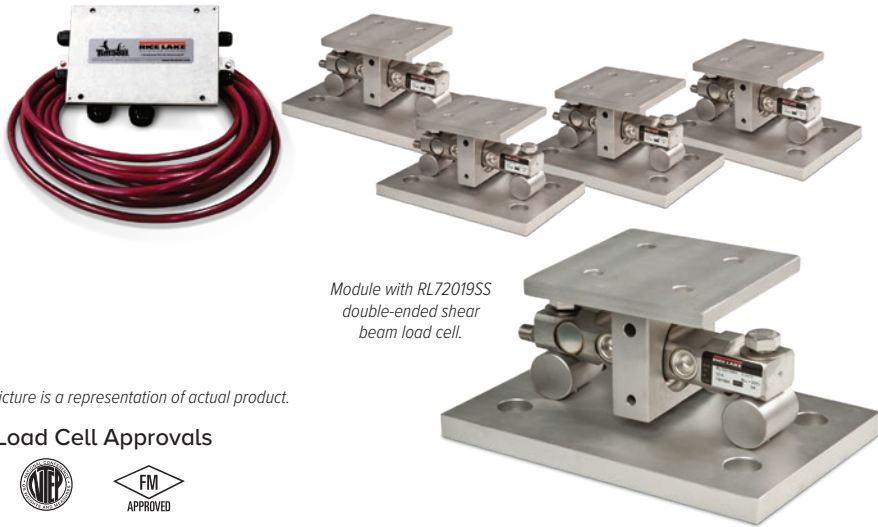


# EZ Mount 1 HE

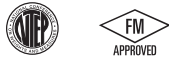
Stainless Steel Weigh Modules, Rice Lake Weighing Systems



Module with RL72019SS double-ended shear beam load cell.

Picture is a representation of actual product.

## Load Cell Approvals



## Order Information

Load Rating (Per Module)	Part #	Price
<b>3-Module Kit</b>		
5,000 lb*	<b>46695</b>	\$6,235.00
10,000 lb	<b>46696</b>	\$6,235.00
20,000 lb	<b>46697</b>	\$6,235.00
30,000 lb	<b>46698</b>	\$12,375.00
40,000 lb	<b>46699</b>	\$12,375.00
50,000 lb	<b>46700</b>	\$12,375.00
60,000 lb	<b>46701</b>	\$12,375.00
<b>4-Module Kit</b>		
5,000 lb*	<b>46702</b>	\$8,390.00
10,000 lb	<b>46703</b>	\$8,390.00
20,000 lb	<b>46704</b>	\$8,390.00
30,000 lb	<b>46705</b>	\$16,175.00
40,000 lb	<b>46706</b>	\$16,175.00
50,000 lb	<b>46707</b>	\$16,175.00
60,000 lb	<b>46708</b>	\$16,175.00
<b>Dummy Load Cells (Mild Steel)</b>		
5,000 lb to 20,000 lb	<b>33749</b>	\$90.00
30,000 lb to 60,000 lb	<b>74016</b>	\$122.00
<b>Grounding Kit</b>		
5,000 lb to 60,000 lb	<b>126419</b>	\$21.00

Includes ground strap and mounting hardware  
\*Non-NTEP

## Shims

	Part #	Price
<b>5,000 lb to 20,000 lb, Stainless Steel</b>		
0.0625 in	<b>150886</b>	\$12.00
0.125 in	<b>150888</b>	\$18.00
0.250 in	<b>150889</b>	\$29.00
<b>30,000 lb to 60,000 lb, Stainless Steel</b>		
0.0625 in	<b>150890</b>	\$19.00
0.125 in	<b>150891</b>	\$30.00
0.250 in	<b>150892</b>	\$64.00
<b>100,000 lb to 150,000 lb, Stainless Steel</b>		
0.0625 in	<b>150893</b>	\$32.00
0.125 in	<b>150894</b>	\$41.00
0.250 in	<b>150896</b>	\$97.00
<b>5,000 lb to 20,000 lb, Mild Steel</b>		
0.0625 in	<b>150874</b>	\$5.00
0.125 in	<b>150876</b>	\$6.00
0.250 in	<b>150877</b>	\$8.00
<b>30,000 lb to 60,000 lb, Mild Steel</b>		
0.0625 in	<b>150878</b>	\$6.00
0.125 in	<b>150880</b>	\$9.00
0.250 in	<b>150881</b>	\$11.00
<b>100,000 lb to 150,000 lb, Mild Steel</b>		
0.0625 in	<b>150882</b>	\$9.00
0.125 in	<b>150884</b>	\$13.00
0.250 in	<b>150885</b>	\$18.00

## Complete Kit Includes

- Three or four EZ Mount 1 stainless steel compression mounts with RL72019SS welded-seal stainless steel double-ended shear beam load cells
- One JB4SS NEMA Type 4X stainless steel signal trim junction box
- 25 ft of our hostile environment EL147HE SURVIVOR® load cell cable

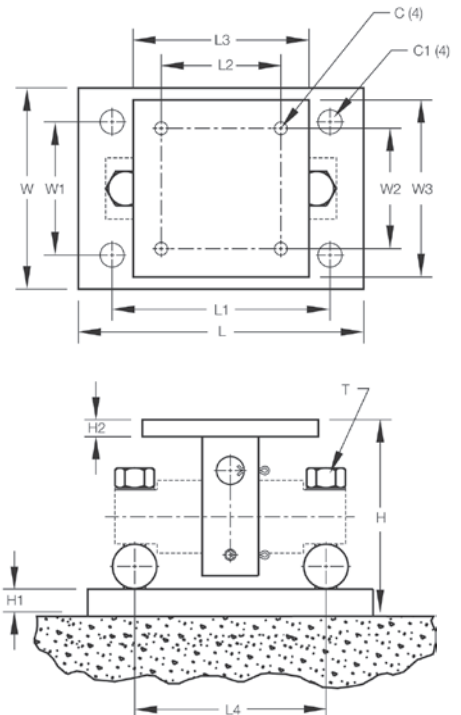
## Standard Features

- Capacities (per module): 5,000 to 60,000 lb
- NTEP Certified (except 5,000 lb)
- Stainless steel construction
- Unique sliding pin design compensates for thermal expansion/contraction
- Self-checking
- Easy load cell replacement
- Simplified design allows bolting directly to tank and floor
- Center-loaded, double-ended shear beam design
- Low-profile design

## Applications

- Medium- to heavy-capacity tank and hopper weighing applications

WEIGH MODULES



## Dimensions

Rated Capacity	C	C1	H	H1	H2	L	L1	L2	L3	L4	T	W	W1	W2	W3
5,000 to 20,000 lb/in	0.56	1.06	5.31	0.75	0.50	11.00	8.00	3.00	6.00	6.87	5/8-18 UNF	7.50	4.00	3.00	6.00
30,000 to 60,000	0.68	1.19	8.43	1.00	0.75	15.00	11.50	5.12	8.00	8.50	1-14 UNS	10.00	6.00	5.12	8.00

NOTES: Mounting bolts (T) may project on lower side of base plate. Foundation plate not included