

NEW HD Mainline Inspection System!

VOYAGER™ HD DETAILS

800-234-7205

CONTACT US

ARIES

INDUSTRIES, INC.

ABOUT

SOLUTIONS

PRODUCTS

SUPPORT

FIND A DEALER

CAREERS

NEWS


EVENTS



system

SOLUTIONS



The Pathfinder Mainline Inspection System is a powerful and advanced truck-mounted system for inspecting mainlines 6" or larger. It combines a powerful transporter, innovative camera, and reel. The Aries Master Controller replaces the need for multiple controllers by providing a single unit ' 

efficient operation of the tractor and camera and supply power to the lights. Includes an Xbox One® controller for remote operation.

Pathfinder Mainline Inspection System



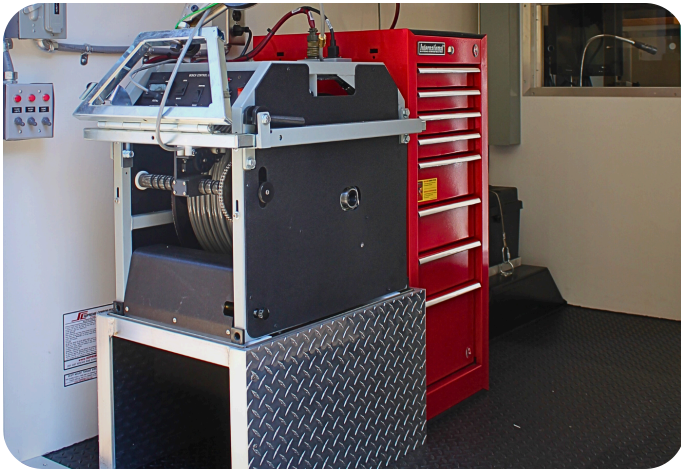
Transporter

Includes a powerful, steerable Pathfinder Series transporter that easily navigates pipes 6" or larger. The tractor is equipped with a rear-viewing camera and a lift to center the camera in a range of pipe sizes. [More on Transporters »](#)



Camera

Our WiperCam Pan & Tilt camera has an in-the-pipe lens cleaning system with field-replaceable wipers to maximize productivity. It's 270° viewing angle and 360° rotation provides complete visibility to ensure accurate assessments. [More on Cameras »](#)



Reel

The weatherproof Pathfinder reel is vehicle-mounted in a heavy-duty frame. It holds 1000' or 1200' of low-friction, multiconductor cable and is outfitted with a front control box with distance display and electrical controls.



Master Controller

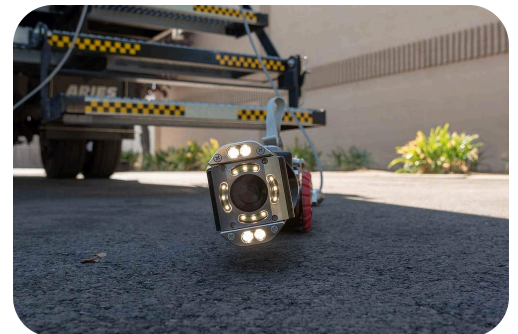
The Aries Master Controller is a rack-mounted power supply and control unit. It provides a single electronic unit to simultaneously operate the tractor and camera, and to supply power to the lights. It includes a control display and a wireless Xbox One® controller to easily operate the reel, tractor, and camera.

Pathfinder System Features

Crawler



- ✓ Powerful, six-wheel, steerable drive to navigate around obstacles
- ✓ Operates in power forward, power reverse, steer-left, steer-right and freewheel modes
- ✓ Compact design for superior maneuverability
- ✓ Works with our **WiperCam Pan & Tilt camera** for superior image capture
- ✓ Rear-facing camera to monitor retrieval
- ✓ Camera lift for full view of the pipe
- ✓ Choice of three Pathfinder models to match pipe size
- ✓ Multiple wheel configurations to adapt to pipe conditions
- ✓ Simplified design for quick tire changes



Mainline Cameras

WiperCam Pan & Tilt or Illumi-Zoom Camera



- ✓ 270° unobstructed viewing angle to view with-the-flow laterals and tractor wheels
- ✓ 360° camera head rotation for a full view of the pipe
- ✓ 120x zoom and high intensity LED light ring to see pipe details
- ✓ Self-cleaning lens system and field replaceable wipers for more time in the pipe
- ✓ SMARTEK internal diagnostics for monitoring camera conditions
- ✓ Adaptable to almost any multiconductor system
- ✓ Corrosion-resistant materials for long life in harsh pipe conditions
- ✓ Internally pressurized to verify seal and prevent leakage
- ✓ Scratch-proof and crack resistant sapphire lens window to withstand tough environments

Master Controller

- ✓ Rack-mounted, electronic unit



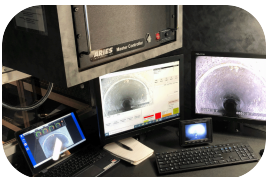
- ✓ Simultaneously operates tractor, reel, and camera
- ✓ Supplies power to the lights
- ✓ Remote operation via wireless Xbox One® controller

Reel

- ✓ Weatherproof
- ✓ Truck-mounted reel in heavy duty frame
- ✓ 1000' or 1200' of low-friction, multiconductor cable extends your reach

REQUEST PRODUCT INFO

Related Products and Accessories



ARIES

ARIES INDUSTRIES, INC COMPANY

550 Elizabeth Street
Waukesha, WI 53186
USA

Toll Free: 1-800-234-7205

Local: 262-896-7205

Contact us online »

ABOUT US

OUR HISTORY

CAREERS

COMPANY NEWS

EVENTS

SUPPORT

CONTACT SUPPORT

FOR DEALERS

FIND A REP

LOCATIONS

DEALER PORTAL

get
social



SOLUTIONS

VIDEO INSPECTION

REHABILITATION

VEHICLES &
TRANSPORT

SOFTWARE

VIEW ALL PRODUCTS



UnitedHealthcare
creates and publishes
the machine-readable
files on behalf of Aries
Industries. To access the
machine-readable files,
please click [here](#).





© 2022 ARIES INDUSTRIES. ALL RIGHTS RESERVED. [SITE MAP](#). [LEGAL DISCLOSURES](#).

