

BeachTech[®]

5500

BEACHTECH 5500

THE SELF-PROPELLED BEACH CLEANER



BEACHTECH 5500

THE SELF-PROPELLED BEACH CLEANER

The BeachTech 5500 is particularly maneuverable thanks to its 3-wheel design. The cleaning system guides the sand over a vibrating screen by means of a conveyor system unit. The sand is screened, which creates a clean beach – no matter whether it is wet or dry.

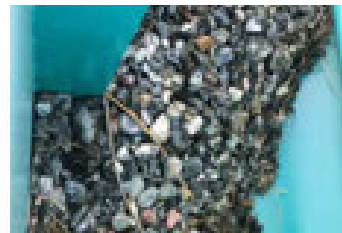
Thanks to its high-performance turbo diesel engine, a propulsion drive with three hydrostatic wheel motors which ensures optimum power transmission, as well as its low-pressure tires, the BeachTech 5500 can be used on various beaches and locations with extreme versatility.

NEW These are the features of the BeachTech 5500:

- ⊕ High area coverage
- ⊕ Large collecting hopper
- ⊕ Particularly maneuverable thanks to its 3-wheel design
- ⊕ Air conditioning
- ⊕ Low maintenance effort
- ⊕ Rugged design
- ⊕ Safety features (CE certified)
- ⊕ 1-person cab
- ⊕ New software and control
- ⊕ State-of-the-art engine (emissions level)



Large collecting hopper
Load volume and unloading height
⊕ The compact collecting hopper has a load volume of 1.5 m³ and a flexible unloading height of 0 to 2,600 mm.



Rugged design
Various application options
⊕ Thanks to the sturdy cleaning unit, the BeachTech 5500 can easily be used on difficult beaches and off the beach (e. g. to clean water filtration retention ponds, collect stones, etc.).



Working width
Area coverage
⊕ Having a working width of 1,524 mm and a large collecting hopper, the BeachTech 5500 achieves high area coverages.



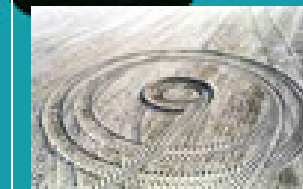
1-person cab
Convenient operation
⊕ Joystick, digital operation and control panel and 2 operation-related screens / camera systems for monitoring



Safety features
Extensive equipment
⊕ The BeachTech 5500 is equipped with numerous safety devices.



Low maintenance effort
Screening unit
⊕ With only three bearings, a hydraulic direct drive, a galvanized screening bed and a transport system unit whose wear parts are reinforced with carbide, the screening unit requires very little maintenance.



3-wheel design
Particularly maneuverable
⊕ The 3-wheel design makes a zero-degree turn radius possible.

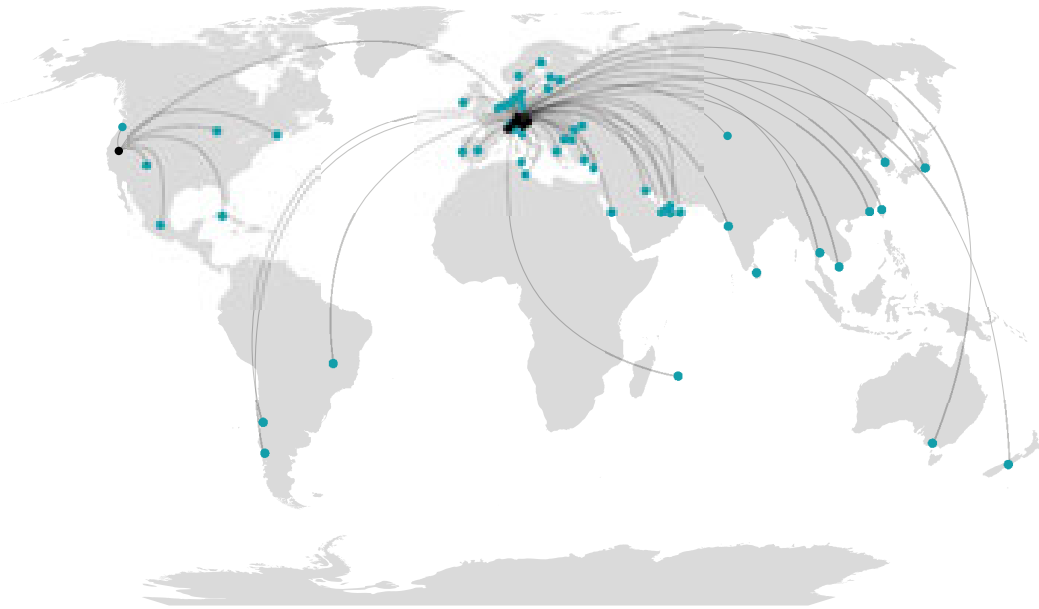
TECHNICAL DATA

DIMENSIONS	Length	5,525 mm	
	Width	Vehicle	2,800 mm
		Working width	1,524 mm
	Height	2,420 mm	
WEIGHTS	Net weight	4,550 kg	
	Gross weight limit ¹	5,600 kg	
	Max. driving speed ^{1,2}	15 km/h	
PERFORMANCE DATA	Working depth up to ²	15 cm	
	Unloading height	from 0 to 2,600 mm	
	Capacity of collecting hopper	1.5 m ³	
ENGINE	Type	Deutz	
	Number of cylinders	4	
	Displacement	2,925 cm ³	
	Power output	55 kW (74 HP)	
	Torque max.	2,400 rpm	
	Exhaust emission standard	EU Level III B; EPA Tier 4F	

¹ in accordance with country-specific road traffic legislation

² depending on the composition of the soil

THE GLOBAL BEACHTECH NETWORK



Kässbohrer Geländefahrzeug AG

Kässbohrerstrasse 11
88471 Laupheim, Germany
Phone +49 7392 900-0
Fax +49 7392 900-445
info@beach-tech.com
www.beach-tech.com

Italian subsidiary

Kässbohrer Italia S. r. l.
Via Galileo Galilei, 32
39100 Bolzano
Phone +39 0471 93-3027
Fax +39 0471 93-2975
info@beach-tech.it
www.beach-tech.it

Austrian subsidiary

Kässbohrer Austria GmbH
Garnei 173
5431 Kuchl
Phone +43 6244 4001-0
Fax +43 6244 4001-11
info@beach-tech.at
www.beach-tech.at

French subsidiary

Kässbohrer E.S.E.
455 Route de Marais
ZAC Porte de Tarentaise
73790 Tours-en-Savoie
Phone +33 479 1046-10
Fax +33 479 1046-40
info@beach-tech.fr
www.beach-tech.fr

Swiss subsidiary

Kässbohrer Schweiz AG
Werkmatt 1
6460 Altdorf
Phone +41 874 85 00
Fax +41 874 85 50
info@pistenbully.ch
www.beach-tech.com

American subsidiary

Kässbohrer All Terrain Vehicles Inc.
8850 Double Diamond Parkway
89521 Reno, Nevada
Phone +1 775 857-5000
Fax +1 775 857-5010
contact@beach-tech.com
www.beach-tech.com



On the details in this catalogue: there may have been product changes after this issue went to print. The images also include accessories and special equipment, which are not supplied as standard. The printing process may cause colour deviations. Statements on compulsory, legal and fiscal regulations and implications are only valid for the Federal Republic of Germany. Therefore, please ask your contact at Kässbohrer Geländefahrzeug AG for the final status. Printed in Germany.



BeachTech is a registered trademark of Kässbohrer Geländefahrzeug AG.



KÄSSBOHRER GELÄNDEFahrzeug AG

