

## Klauke® 32 kN and 19 kN Press Tools

### Benefits:

- Durable, high-quality construction that is built to last
- Short pressing cycle – 10 seconds or less – increases productivity
- Compact design and 350° jaw rotation allows technician to install in tight spaces
- Automatic piston return
- Safety feature that lets the press cycle be interrupted, allowing for manual release of the piston, if needed
- High-quality, powerful Makita Li-Ion technology, with charging time of just 15 minutes
- Tool service indicated via imbedded LEDs, illuminates at 10,000 cycles



32 kN press tool

### 32 kN Tool Features:

**Pressing Force:** 32 kN  
**Presses/charge:** 350-400 (4.0 Ah)  
**Battery Capacity:** 18V / 4.0 Ah Li-Ion Makita (BL1840B)  
**Charging Time:** 15 minutes  
**Operating Temp. Range:** -10°C to 40°C (14°F to 104°F)  
**Weight with Battery:**  
 Without Jaw: 3.6 kg (8.0 lb)  
 Including Jaw: 5.7 kg (12.5 lb)  
**Dimensions:** 359 x 76 x 317 mm

### 19 kN Tool Features:

**Pressing Force:** 19 kN  
**Presses/charge:** 100-150 (2.0 Ah)  
**Battery Capacity:** 18V / 2.0 Ah Li-Ion Makita (BL1820B)  
**Charging Time:** 15 minutes  
**Operating Temp. Range:** -10°C to 40°C (14°F to 104°F)  
**Weight with Battery:**  
 Without Jaw: 1.8 kg (4.0 lb)  
 Including Jaw: 3.1 kg (6.8 lb)  
**Dimensions:** 395 x 80 x 118 mm



19 kN press tool

## Klauke® Jaws

### Klauke 32 kN Jaws

Size	Part Number
1/4"	399021321040
5/16"	399021321050
3/8"	399021321060
1/2"	399021321080
5/8"	399021321100
3/4"	399021321120
7/8"	399021321140
1"	399021321160
1-1/8"	399021321180
1-1/4"	399021321200
1-3/8"	399021321220
8-Jaw Kit	399031320801

### Klauke 19 kN Jaws

Size	Part Number
1/4"	399021191040
5/16"	399021191050
3/8"	399021191060
1/2"	399021191080
5/8"	399021191100
3/4"	399021191120
7/8"	399021191140
1"	399021191160
1-1/8"	399021191180
1-1/4"	399021191200
1-3/8"	399021191220
8-Jaw Kit	399031190801



### Accessory Kit:

- Tubing cutter
- RLS depth gauge
- RLS press gauge
- Permanent marker
- Wire Brush (for jaw cleaning)
- Abrasive pad
- Deburring tool

**Part Number: 399040102**

*Accessory kit is included in both 19 kN tool kits. 32 kN 8-jaw kit includes the depth gauge, press gauge, marker, brush and abrasive pad (no cutter or deburring tool).*



## Klauke® Tool and Jaw Kits



Each tool and jaw kit comes in a hard plastic carrying case. Tools sold in the United States include two batteries and a battery charger (not included in kits sold outside the U.S.) Batteries and chargers can be sourced from an RLS or Makita distributor.

### U.S. Part Numbers

*(Tools include 2 batteries and a charger.)*

**32 kN Tool (no jaws)**

**Part Number: 399011320001**

**19 kN Tool (no jaws)**

**Part Number: 399011190001**

**19 kN Tool and 5 Jaws**

*(3/8", 1/2", 5/8", 7/8", 1-1/8")*

**Part Number: 399011190501**

### International Part Numbers

*(Tools do not include batteries or charger.)*

**32 kN Tool (no jaws)**

**Part Number: 399011320002**

**19 kN Tool (no jaws)**

**Part Number: 399011190002**

**19 kN Tool and 5 Jaws**

*(3/8", 1/2", 5/8", 7/8", 1-1/8")*

**Part Number: 399011190502**

### Jaw Kits

**32 kN 8-Jaw Kit**

*(1/4", 3/8", 1/2", 5/8", 3/4", 7/8", 1-1/8", 1-3/8")*

**Part Number: 399031320801**

**19 kN 8-Jaw Kit**

*(1/4", 3/8", 1/2", 5/8", 3/4", 7/8", 1-1/8", 1-3/8")*

**Part Number: 399031190801**

## RIDGID® Jaws



Size	Part Number
1/4"	399022001040
5/16"	399022001050
3/8"	399022001060
1/2"	399022001080
5/8"	399022001100
3/4"	399022001120
7/8"	399022001140
1-1/8"	399022001180
1-3/8"	399022001220

### RIDGID 8-Jaw Set

The RIDGID 8-Jaw Set comes in a hard plastic carrying case and includes a tube cutter, deburring tools, press gauge, depth gauge, stainless steel brush, abrasive pad and permanent marker. Jaw sizes include 1/4", 3/8", 1/2", 5/8", 3/4", 7/8", 1-1/8" and 1-3/8". The 5/16" jaw is sold separately.

**Part Number: 399032000801**

### RIDGID 6-Jaw Set

The RIDGID 6-Jaw Kit comes in a hard plastic carrying case and includes a tubecutter, deburring tool, press gauge, depth gauge, stainless steel brush, abrasive pad and permanent marker. Jaw sizes include 1/4", 3/8", 1/2", 5/8", 3/4", 7/8".

**Part Number: 399032001045**

**NOTE:** RIDGID press tools are sold through RIDGID distributors, available in lightweight pistol-grip and inline models.









## Accessories

Part Number	Description
399011000100	Klauke Replacement Tool Case
399031000100	Klauke Jaw Case
399032000100	RIDGID Jaw Case
399040307	1-1/4" Press Gauge
399040306	Press Gauge
399040308	Depth Gauge
399040301	Tube Cutter
399040302	Small Tube Deburring Tool (1/4" - 1-1/4")

Part Number	Description
399040309	Large Tube Deburring Tool (1/2" - 2")
399040303	Stainless Steel Brush
399040304	Abrasive Pad
399040305	Permanent Marker
399040101	Safety Kit (plastic bag, pen, instructions, crimp/depth gauges)
399040203	Makita 18V Charger - DC18RC
399040202	Makita 18V Battery - BL1815
399040201	Diagnostic tool - PGA1

# TOOLS, JAWS AND ACCESSORIES

## Tool and Jaw Compatibility Matrix – 1/4" to 1-3/8" Fittings

			JAW MANUFACTURER				
			Klauke®			RIDGID®	Milwaukee®
TOOL MANUFACTURER	Model(s)	Size Range	15 kN	19 kN	32 kN	24 kN	32 kN
	MAP2L	1/4" – 1-1/8"	✓				
	MAP2L19	1/4" – 1-3/8"		✓			
	UAP 332	1/4" – 1-3/8"			✓		✓
	UAP 432	1/4" – 1-3/8"			✓		✓
	Romax Compact	1/4" – 1-3/8"		✓			
	Romax 3000	1/4" – 1-3/8"			✓		✓
	Romax 4000	1/4" – 1-3/8"			✓		✓
	PC-20 M	1/4" – 1-1/8"	✓				
	RP 115	1/4" – 1-1/8"	✓				
	RP 200 RP 210 RP 240 RP 241	1/4" – 1-3/8"				✓	
	RP 330 RP 340 RP 350 RP 351	1/4" – 1-3/8"			✓		✓
	M12	1/4" – 1-3/8"				✓	
	M18 (excludes model 2674-20 short throw tool)	1/4" – 1-3/8"			✓		✓
	Pressgun Picco 6	1/4" – 1-3/8"				✓	
	Pressgun 6	1/4" – 1-3/8"			✓		✓
	ACO103	1/4" – 1-3/8"		✓			
	ACO203	1/4" – 1-3/8"			✓		✓
	ECO203	1/4" – 1-3/8"			✓		✓
	EFP203	1/4" – 1-3/8"			✓		✓
	DCE200	1/4" – 1-3/8"			✓		✓

Only RLS-approved tools and jaws can be used to install RLS fittings.



**Klauke® 32 kN Long-Throw Tool, Actuator and Collar Jaws (1-5/8" & 2-1/8")**



**32 kN Long-Throw Tool Features:**

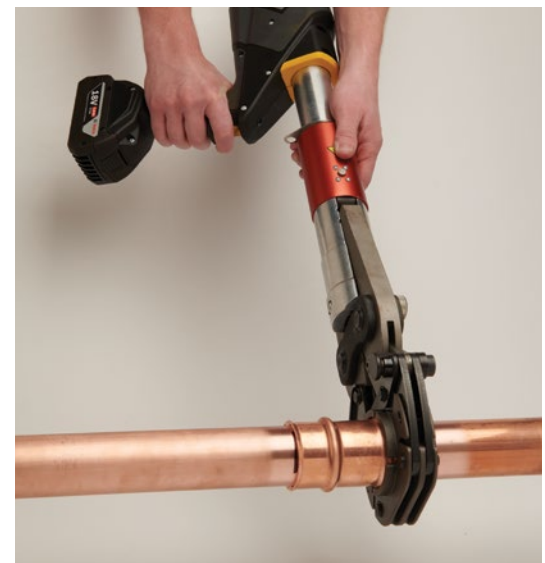
- Pressing Force: 32 kN
- Presses/charge: 350-400 (4.0 Ah)
- Battery Capacity:  
18V / 4.0 Ah Li-Ion Makita (BL1840B)
- Charging Time: 15 minutes
- Operating Temp. Range:  
-10°C to 40°C (14°F to 104°F)
- Weight with Battery: 4.4 kg (9.7 lb)
- Dimensions: 530 x 76 x 317 mm
- Part Number: 399011329900

**Benefits:**

- Fast pressing cycle of less than 25 seconds
- 350° tool rotation for flexibility
- Automatic retraction saves time on multiple presses
- High safety factor thanks to "Quickstop" function
- Precise pressing force with audible signal
- Long battery and tool service-life
- Tool information shown via OLED display or i-press® app
- High-quality, powerful Li-Ion technology for long lasting operation

**Accessories included with tool:**

- Depth/press gauge  
**Part Number: 399040501**
- Permanent marker
- Wire brush  
(for collar jaw cleaning)
- Abrasive pad



**Jaws:**

- 2-1/8" Collar Jaw  
**Part Number: 399021321340**
- 1-5/8" Collar Jaw  
**Part Number: 399021321260**
- Actuator Jaw  
**Part Number: 399021321000**

Actuator Jaw is required and is used with both 1-5/8" and 2-1/8" collar jaws.

“Overall, we’ve seen that most of our project times have been cut in half using RLS fittings. On bigger jobs, where it might have taken us two weeks to pipe a job in the past, it’s only taken a week.”

– Alex Bishoff  
Howard Mechanical Services

