



**ALL ACCESS
EQUIPMENT**



CMC
THE SPECIALIST

CMC 60HD+ARBOR PRO

TECHNICAL DATA SPECSHEET





AERIAL | STANDARD

- 62' working height
- Up to 38' of lateral side reach
- Proportional controls allow up to 2 functions at once at full speed
- Turret rotation +/- 720°
- Lower pantograph
- Upper articulating boom with two telescopic extensions
- Hydraulic hoses and control cables inside booms for complete protection, with easy service access
- Telescoping boom sections with hydraulic cylinders and leaf drive chains
- Radio remote control and fixed platform control station



OUTRIGGERS | STANDARD

- Ability to setup on up to 27° or 50% grade
- Automatic outrigger leveling, with individual manual hydraulic override controls
- 4 hydraulic outriggers with the ability to vary the positioning based on work zone requirements: wide, narrow, wide and narrow.
- Waterproof safety switches placed in well protected positions
- Dual lock valves on all hydraulic cylinders
- Outrigger feet with articulating pad made of special anti-slip polymeric plastic to ensure safety



CHASSIS | STANDARD

- Radio remote control storage box and built in battery charger for radio remote lithium batteries
- Automatic outrigger self-leveling



TRACKS | STANDARD

- Black rubber tracks (set)
- Horizontal hydraulically adjustable tracks 34" to 50" wide



POWER | STANDARD

- Kubota Z602 diesel, 16.8 HP, vertical 4-Cycle liquid cooled diesel engine
- 12V Battery backup electric pump (intermittently use the 12V battery to operate all functions)



PLATFORM | STANDARD

- Fixed single man aluminum basket with rounded outer corners for better versatility. Size is 31.5" L x 27.5" W x 43.3" H
- Ability to raise basket up out of the way while driving the tracks



OTHER | STANDARD

- 1 & 3 years warranty. 1 yr "bumper to bumper" and 3 yrs on certain components. Unlimited use hours
- Two (2) lithium batteries and built in charger for radio remote control
- Detailed owners maintenance and use manual, including parts and service diagrams
- Four (4) specially designed sliding outrigger pads
- One (1) Fall arrest safety harness



CHASSIS | OPTIONAL

- Travel alarm
- Warning light
- 1 Custom paint color: Choice of more than 200 colors. *No fluorescent or metallic colors*
- 2 Custom paint colors: Choice of more than 200 colors. *No fluorescent or metallic colors*

TRACKS | OPTIONAL

- Non-marking grey tracks (replaces the standard black tracks)
- Track socks

POWER | OPTIONAL

- Full lithium battery power (160A 48V) with built in electric charger (replaces Honda gasoline engine). We strongly recommend that you pair this with option 0000110
- Hybrid: Honda gas engine (GX390) + 160ah lithium batteries. Kubota diesel is removed
- Full lithium battery power with built in battery charger. Should be paired with option 0000110. Kubota diesel is removed
- Auxiliary 120V 20A plug in electric motor with charger for 12V battery. This is not a battery system. With this system, you can plug the machine in and use it on 100% AC electric power. This is in addition to the combustion engine

PLATFORM | OPTIONAL

- Hydraulic Tool Outlet in basket
- High pressure air/water hoses routed internally from the ground to the basket - 2900PSI
- 120V Electric outlet in basket with extension cord through the booms
- One-man fiberglass basket sized 31.5" L x 23.6" W x 43.3" H (replaces the standard aluminum one man basket)
- Two-man fiberglass basket sized 47.2" L x 23.6" W x 43.3" H (replaces the standard aluminum single man basket)
- 180° Basket rotation +/- 90° each way, not recommended for single-man basket

OTHER | OPTIONAL

- Biodegradable hydraulic fluid (non-toxic, natural fluid. For extreme cold or sensitive locations)
- Ratchet straps (each. 4 are already included)
- Additional fall arrest aerial lift harness and lanyard kit including storage bag
- Additional set of keys (2 sets already included)
- Specially designed outrigger pads (each) (4 are already included)
- Set of 4 cavity outrigger pads
- Double Travel Speed

LITHIUM ION BATTERIES



NON-MARKING TRACKS



HYDRAULIC TOOL OUTLET



CUSTOM PAINT COLORS



TECHNICAL SPECIFICATIONS

PERFORMANCE

Maximum working height	62'
Maximum side reach at 200 lbs.	38'
Maximum side reach at 250 lbs.	35'
Maximum side reach at 485 lbs.	33'
Maximum weight load with standard basket	485 lbs
Moveable Jib articulating range	90°
Turret rotation range	+/-720°
Basket rotation range.....	+/- 90°
Maximum slope to stabilize (deployment).....	27° (50%)
Height / Width tracks adjustment	34" - 50"
Maximum slope approach angle (front, engine).....	31° (58%)
Maximum slope approach angle (rear, basket)	28° (55%)
Gradeability -- max. travel angle / slope*.....	19° (34%)
Maximum crawler travel speed**	0 - 1.3 ft/s

*This is the standard setting. The standard setting can be overridden to: 31° (60.1%)

**3 speeds: Slow, Slow with Torque, Fast

DIMENSIONS

Basket height.....	43"
Basket width.....	32"
Basket length.....	25"
Total length.....	15' 6"
Height in transport position	78"
Total width (without basket, tracks in)	35"
Total width (without basket, tracks extended)	51"
Free height from the ground	7"
Tracks (LxW)	69" x 10"
Track extension	34 ½" - 50"
Outrigger spread length in narrow position	13' 6"
Outrigger spread width in narrow position	8' 9"
Outrigger spread length in wide position	11' 6"
Outrigger spread width in wide position	11' 6"
Outrigger foot diameter	7"

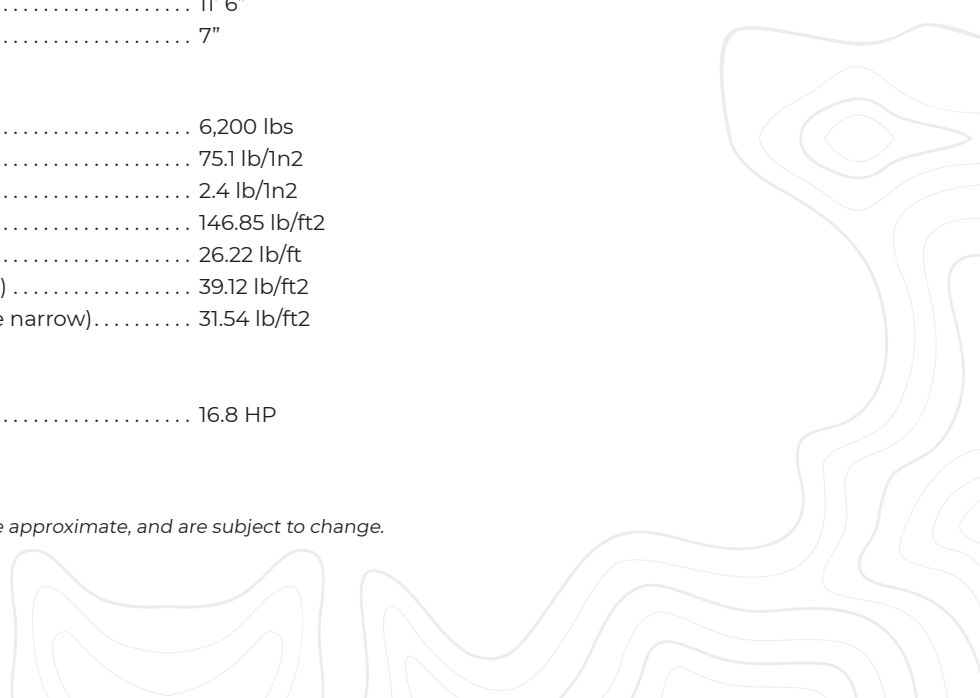
WEIGHT

Total weight	6,200 lbs
Maximum outrigger foot pressure.....	75.1 lb/1n2
Maximum track pressure	2.4 lb/1n2
Maximum pressure in travel	146.85 lb/ft2
Maximum pressure in work (wide outrigger setup)	26.22 lb/ft
Maximum pressure in work (narrow outrigger setup)	39.12 lb/ft2
Maximum pressure in work (one side wide, one side narrow).....	31.54 lb/ft2

POWER

Kubota Z602 diesel engine	16.8 HP
120V 20A plug in electric motor (optional)	
Lithium ion batteries (optional)	

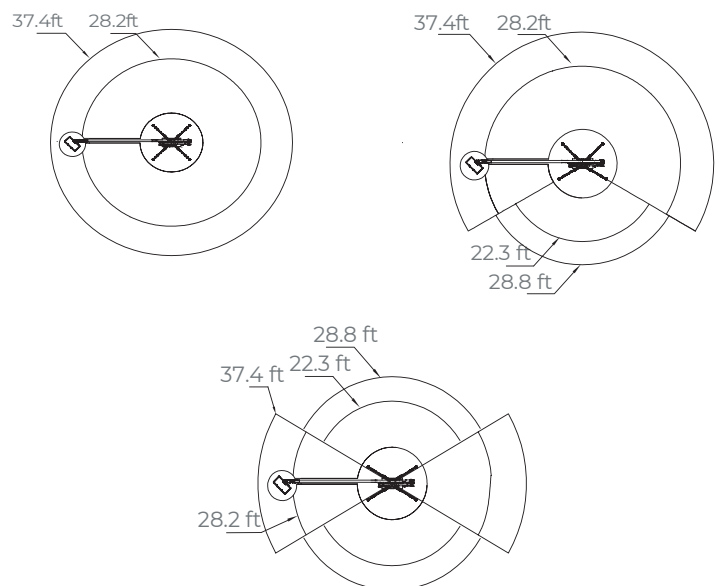
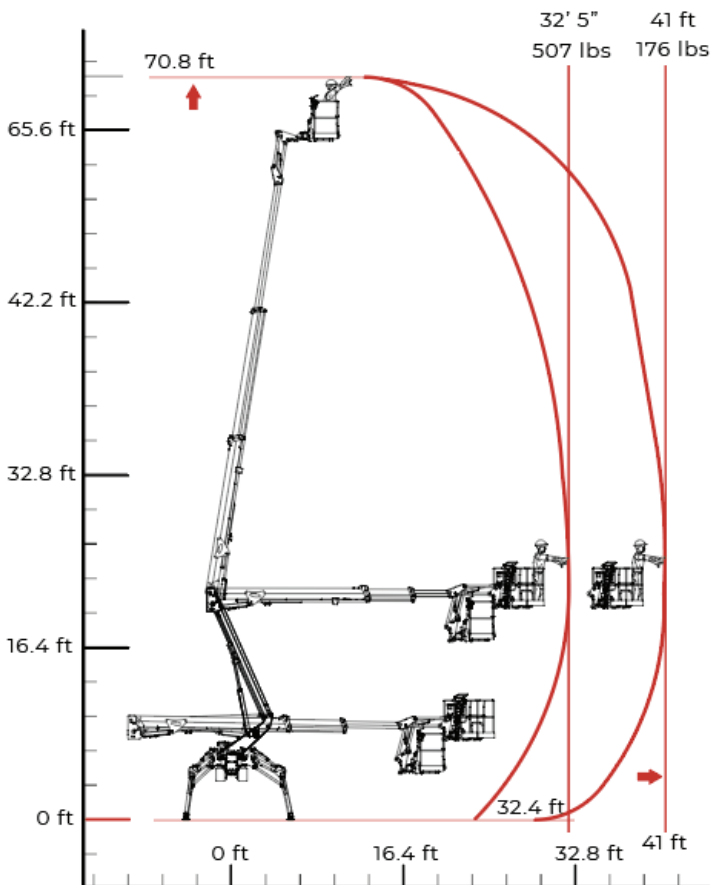
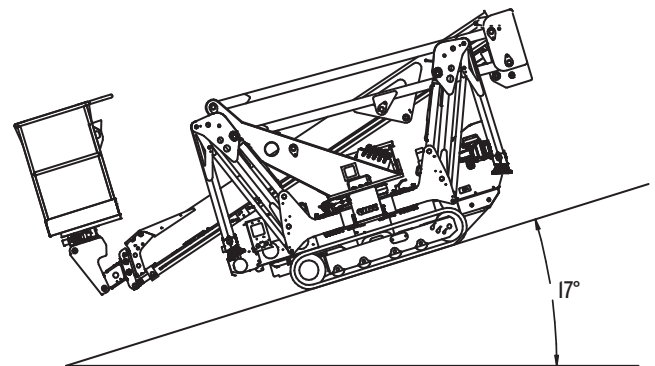
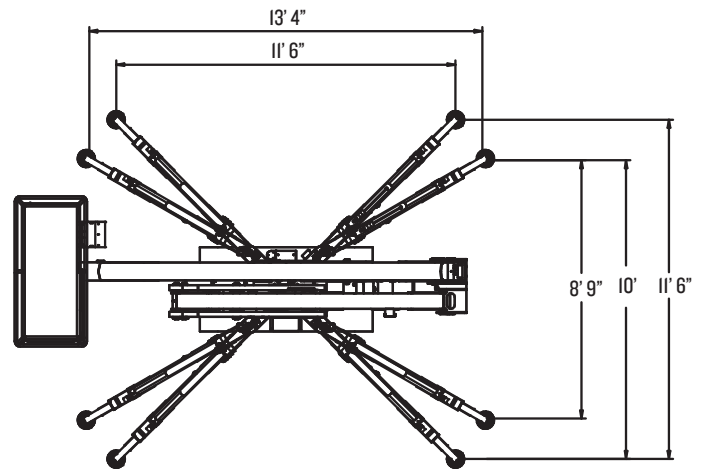
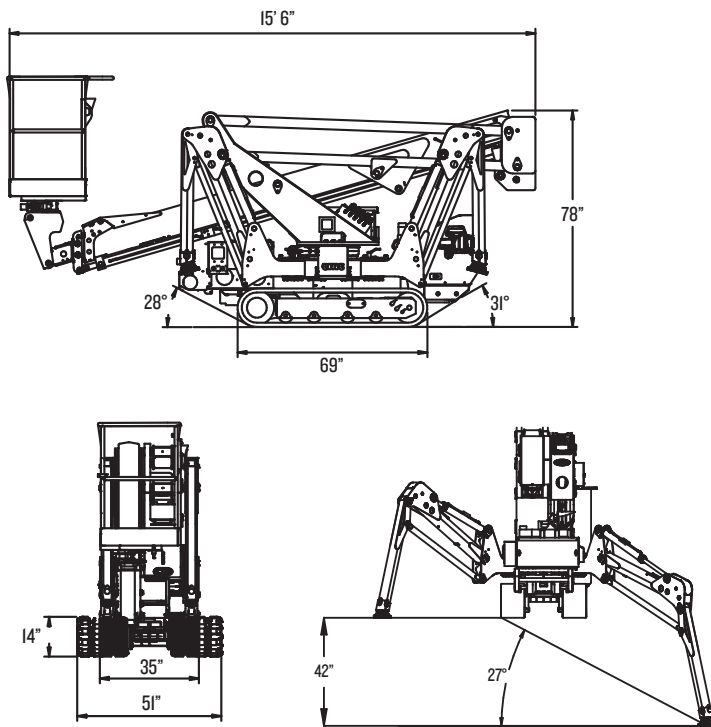
*Technical specifications are non-binding, in some cases are approximate, and are subject to change.






DIAGRAMS

*Measurements are in feet and inches



*Technical specifications are non-binding, in some cases are approximate, and are subject to change.

 **GALLERY**

