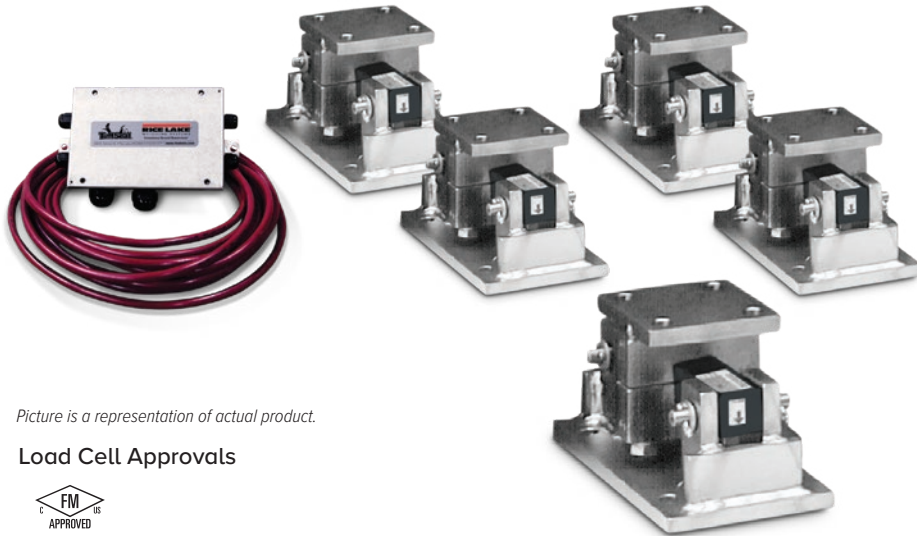


RL1600 Series Coated Load Cell Version

Stainless Steel Weigh Modules, Rice Lake Weighing Systems



Picture is a representation of actual product.

Load Cell Approvals



Order Information

| Load Rating (Per Module) | Part # | Price |
|---|--------|-------------|
| Single Module (Does NOT Include Load Cell) | | |
| 1,000 lb to 5,000 lb | 17813 | \$685.00 |
| 10,000 lb to 25,000 lb | 17815 | \$1,345.00 |
| 50,000 lb | 17842 | \$3,185.00 |
| 75,000 lb | 25347 | \$3,185.00 |
| 3-Module Kit | | |
| 1,000 lb | 199023 | \$3,820.00 |
| 1,500 lb | 199025 | \$3,820.00 |
| 2,000 lb | 199027 | \$3,820.00 |
| 2,500 lb | 199029 | \$3,820.00 |
| 3,000 lb | 199031 | \$3,820.00 |
| 5,000 lb | 199033 | \$3,820.00 |
| 10,000 lb | 199035 | \$5,830.00 |
| 15,000 lb | 199037 | \$5,830.00 |
| 20,000 lb | 199038 | \$5,830.00 |
| 25,000 lb | 199040 | \$5,830.00 |
| 50,000 lb | 199042 | \$13,255.00 |
| 75,000 lb | 199044 | \$13,255.00 |
| 4-Module Kit | | |
| 1,000 lb | 199024 | \$4,985.00 |
| 1,500 lb | 199026 | \$4,985.00 |
| 2,000 lb | 199028 | \$4,985.00 |
| 2,500 lb | 199030 | \$4,985.00 |
| 3,000 lb | 199032 | \$4,985.00 |
| 5,000 lb | 199034 | \$4,985.00 |
| 10,000 lb | 199036 | \$7,955.00 |
| 15,000 lb | 199056 | \$7,955.00 |
| 20,000 lb | 199039 | \$7,955.00 |
| 25,000 lb | 199041 | \$7,955.00 |
| 50,000 lb | 199043 | \$17,895.00 |
| 75,000 lb | 199045 | \$17,895.00 |

Dimensions

| Rated Capacity | C | H | H1 | H2 | L | L1 | L2 | L3 | T | W | W1 | W2 | W3 |
|------------------|------|------|------|------|-------|------|------|-------|-------------|-------|------|------|------|
| 1,000 to 5,000 | 0.56 | 5.00 | 0.50 | 0.50 | 9.25 | 2.75 | 4.00 | 6.25 | 1/2-13 UNC | 5.00 | 3.75 | 2.75 | 4.00 |
| 10,000 to 25,000 | 0.78 | 7.87 | 0.75 | 0.75 | 12.00 | 6.00 | 8.00 | 7.50 | 3/4-10 UNC | 8.00 | 6.00 | 6.00 | 8.00 |
| 50,000 to 75,000 | 0.78 | 9.25 | 1.00 | 1.00 | 16.25 | 6.50 | 9.00 | 11.50 | 1 1/4-7 UNC | 12.00 | 9.50 | 6.50 | 9.00 |

Complete Kit Includes

- Three or four RL1600 stainless steel compression mounts with RL75016 coated alloy steel, environmentally sealed, double ended shear beam load cells
- One JB4SS NEMA Type 4X stainless steel signal trim junction box
- 25 ft of hostile environment EL147HE SURVIVOR® load cell cable

Standard Features:

- Capacities (per module): 1,000 to 75,000 lb
- Stainless steel construction (mounts)
- Self-checking, easy-to-use design allows module to be bolted directly to tank leg without requiring additional mounting plates or load buttons
- Double-ended shear beam design, center loaded

Applications

- Medium- to heavy-capacity tanks, bins and hoppers
- Bulk material management

Shims, Stainless

| | Part # | Price |
|-------------------------------|--------|---------|
| 1,000 lb to 5,000 lb | | |
| 0.0625 | 150852 | \$7.00 |
| 0.125 | 150853 | \$12.00 |
| 0.250 | 150854 | \$18.00 |
| 10,000 lb to 25,000 lb | | |
| 0.0625 | 150855 | \$19.00 |
| 0.125 | 150856 | \$30.00 |
| 0.250 | 150857 | \$65.00 |
| 50,000 lb to 75,000 lb | | |
| 0.0625 | 150858 | \$27.00 |
| 0.125 | 150859 | \$38.00 |
| 0.250 | 150861 | \$79.00 |

WEIGH MODULES

