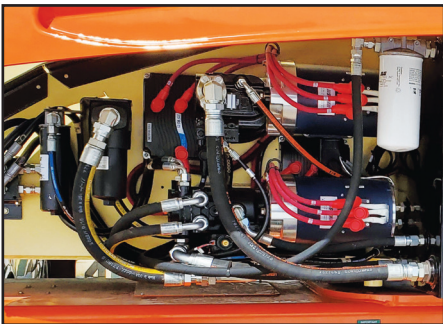




A125JCR CLEAN ROOM LIFT

Our next generation of man lifts are designed specifically to meet the requirements of clean rooms.

- The unit offers multi-shift capacity before charging with their high-capacity 96-volt battery assemblies.
- The lift is built to be highly serviceable and is constructed from off-the-shelf components.
- The learning curve and the chance of error are minimized by retaining an industry-standard user interface.
- The drive function is specifically designed and tuned to operate in the cramped environment of a clean room. The drive offers precise controls through a combination of motor controllers and hydrostatic drive control.



- High-efficiency three-phase electric motors are used to power the drive and boom functions.
- The boom functions are controlled by a separate motor and compensated axial piston pump that allows for the finesse of small motions and the demands of large flows with equal ease.
- An auxiliary pump and battery are included to ensure no one is ever stuck high in the air.

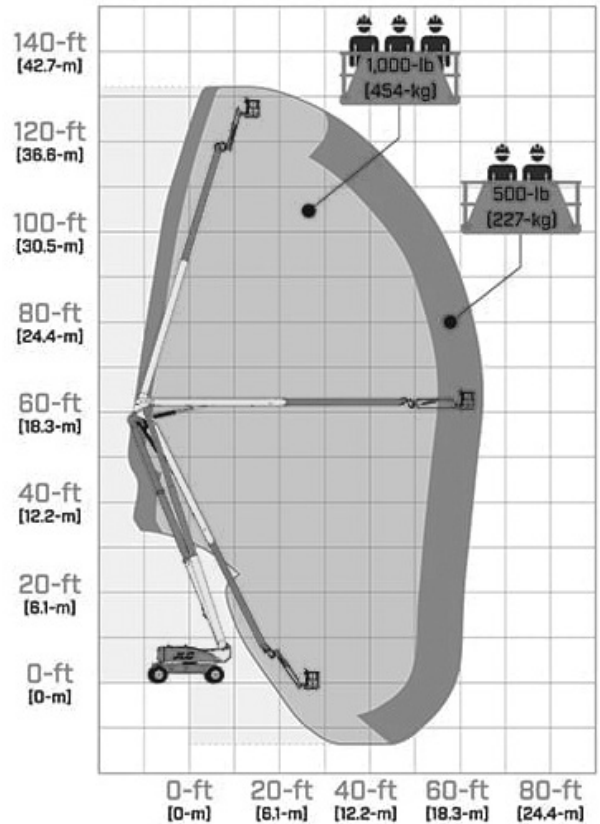
- The battery charger is a next-generation high-frequency fully programmable battery charger.
- The battery charger has the option of becoming part of a service network.
- We offer optional non-marking wheels as requested. These non-marking wheels are solid and increase the overall rigidity of the lift.



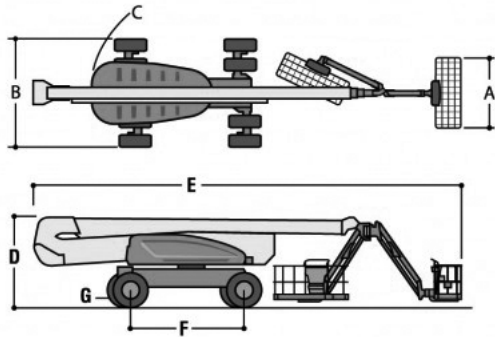
Specifications:

A125JCR	US	Metric
Platform Height	125 ft	38.1 m
Horizontal Reach (Unrestricted)	63 ft 2 in	19.3 m
Horizontal Reach (Restricted)	53 ft 2 in	16.9 m
Platform Capacity (Restricted)	1000 lbs	453.59 kg
Platform Capacity (Unrestricted)	500 lbs	226.8 kg
Stowed Height	10 ft	3.05 m
Stowed Length (Transport Mode)	37 ft 7 in	11.46 m
Stowed Length (Working Mode)	47 ft 6 in	14.48 m
Overall Width (Axles Retracted)	8 ft 2 in	2.49 m
Overall Width (Axles Extended)	12 ft 6 in	3.81 m
Tail Swing	11 ft 3 in	3.43 m
Outside Turning Radius (axles extended)	19 ft 4 in	5.89 m
Inside Turning Radius (axles extended)	8 ft	2.4 m
Outside Turning Radius (axles retracted)	22 ft 6 in	6.8 m
Inside Turning Radius (axles retracted)	14 ft 5 in	4.4 m
Travel Speed	3.25 mph	5.2 km/h

Range Diagram:



Dimensions:



Dimensional Data

A. Platform Size		36 x 96 in. (0.91 x 2.44 m)
B. Overall Width	Axles Retracted	8 ft 2 in. (2.49 m)
	Axles Extended	12 ft 6 in. (3.81 m)
C. Tailswing		3 ft (91 cm)
D. Stowed Height		10 ft (3.05 m)
E. Overall Length	Jib Stowed	37 ft 7 in. (11.45 m)
	Jib Deployed	47 ft 6 in. (14.48 m)
F. Wheel Base		12 ft 6 in. (3.81 m)
G. Ground Clearance	Axle	12 in. (30 cm)
	Chassis	25.5 in. (65 cm)
Weight ²		44,000 lb (19,958 kg)



S81W18561 Gemini Drive, Muskego, WI 53150
262-710-4028 | www.BaileyCranes.com