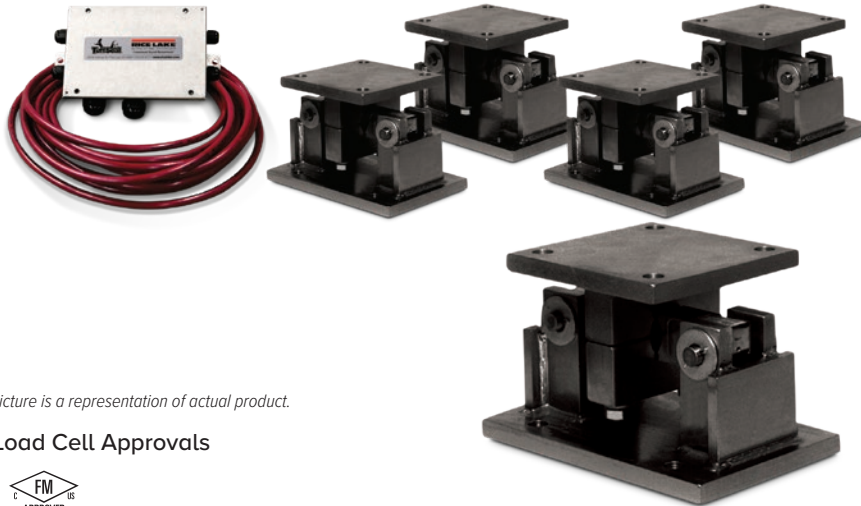


RL1600 Series

Mild Steel Weigh Modules, Rice Lake Weighing Systems



Picture is a representation of actual product.

Load Cell Approvals



Order Information

Load Rating (Per Module)	Part #	Price
Single Module (Does NOT Include Load Cell)		
1,000 lb to 5,000 lb	17812	\$185.00
10,000 to 25,000 lb	17814	\$357.00
50,000 lb	17816	\$1,197.00
75,000 lb	25346	\$1,197.00
3-Module Kit		
1,000 lb	18117	\$2,285.00
1,500 lb	18118	\$2,285.00
2,000 lb	18119	\$2,285.00
2,500 lb	18120	\$2,285.00
3,000 lb	18121	\$2,285.00
5,000 lb	18122	\$2,285.00
10,000 lb	18123	\$3,000.00
15,000 lb	18124	\$3,000.00
20,000 lb	18125	\$3,000.00
25,000 lb	18126	\$3,000.00
50,000 lb	18127	\$6,305.00
75,000 lb	25348	\$6,305.00
4-Module Kit		
1,000 lb	18129	\$2,925.00
1,500 lb	18130	\$2,925.00
2,000 lb	18131	\$2,925.00
2,500 lb	18132	\$2,925.00
3,000 lb	18133	\$2,925.00
5,000 lb	18134	\$2,925.00
10,000 lb	18135	\$3,875.00
15,000 lb	18136	\$3,875.00
20,000 lb	18137	\$3,875.00
25,000 lb	18138	\$3,875.00
50,000 lb	18139	\$8,425.00
75,000 lb	25349	\$8,425.00

VPG Sensortronics 65016 Order Information

Load Rating (Per Module)	Part #	Price
3-Module Kit		
1,000 lb	18189	\$2,685.00
1,500 lb	18190	\$2,685.00
2,500 lb	18192	\$2,685.00
5,000 lb	18194	\$2,685.00
10,000 lb	18195	\$3,400.00
15,000 lb	18196	\$3,400.00
20,000 lb	18197	\$3,400.00
25,000 lb	18198	\$3,400.00
50,000 lb	18199	\$6,800.00
75,000 lb	25350	\$6,800.00
4-Module Kit		
1,000 lb	18201	\$3,485.00
1,500 lb	18202	\$3,485.00
2,500 lb	18204	\$3,485.00
5,000 lb	18206	\$3,485.00
10,000 lb	18207	\$4,465.00
15,000 lb	18208	\$4,465.00
20,000 lb	18209	\$4,465.00
25,000 lb	18210	\$4,465.00
50,000 lb	18211	\$8,920.00
75,000 lb	25351	\$8,920.00
Dummy Load Cells		
1,000 lb to 5,000 lb	18236	\$26.00
10,000 lb to 25,000 lb	18237	\$42.00
50,000 lb	18238	\$56.00

Complete Kit Includes

- Three or four RL1600 mild steel compression mounts with RL75016 environmentally protected double-ended shear beam load cells
- One JB4SS NEMA Type 4X stainless steel signal trim junction box
- 25 ft of our hostile environment EL147HE SURVIVOR® load cell cable

Standard Features

- Capacities (per module): 1,000 to 75,000 lb
- Coated mild steel construction
- Self-checking, easy-to-use design allows module to be bolted directly to tank leg without requiring additional mounting plates or load buttons
- Double-ended shear beam design, center loaded
- Compatible with VPG® Sensortronics 65016 load cells

Applications

- Medium- to heavy-capacity tanks, bins and hoppers
- Bulk material management

WEIGH MODULES

Shims, Mild Steel

	Part #	Price
1,000 lb to 5,000 lb		
0.0625 in	150844	\$2.00
0.125 in	150845	\$3.00
0.250 in	150846	\$3.00
10,000 lb to 25,000 lb		
0.0625 in	150847	\$5.00
0.125 in	150848	\$7.50
0.250 in	150849	\$8.00
50,000 lb to 75,000 lb		
0.0625 in	150850	\$7.00
0.125 in	150851	\$9.00
0.250 in	150866	\$7.50

RL1600 Series

Mild Steel Weigh Modules, Rice Lake Weighing Systems

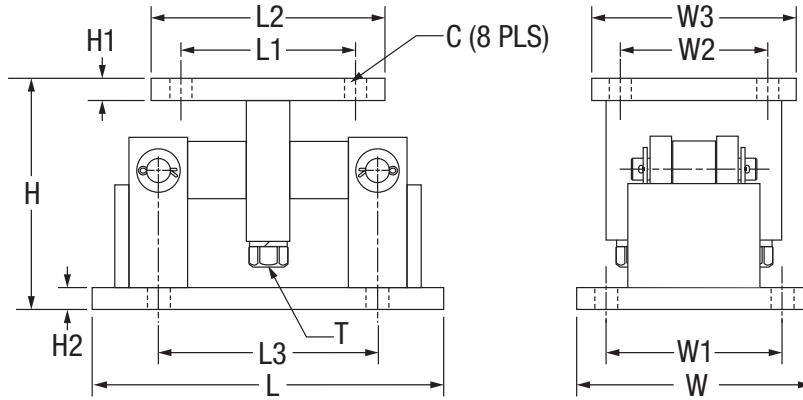
Load Cell Upgrade

RL75016SS Stainless Steel Load Cells	
Three mount kits, 1,000 lb to 25,000 lb	\$75.00 added to list price
Four mount kits, 1,000 lb 25,000 lb	\$100.00 added to list price
RL75016WHE Stainless Steel Hermetic Load Cells	
Three mount kits 1,000 lb to 5,000 lb	\$540.00, 10 k-25 k \$588.00 added to list price
Four mount kits 1,000 lb to 5,000 lb	\$720.00, 10 k-25 k \$784.00 added to list price

Contact factory for a 50,000 lb to 75,000 lb adder for stainless only

Dimensions

Rated Capacity	C	H	H1	H2	L	L1	L2	L3	T	W	W1	W2	W3
1,000 to 5,000	0.56	5.00	0.50	0.50	9.25	2.75	4.00	6.25	1/2-13 UNC	5.00	3.75	2.75	4.00
10,000 to 25,000	0.78	7.87	0.75	0.75	12.00	6.00	8.00	7.50	3/4-10 UNC	8.00	6.00	6.00	8.00
50,000 to 75,000	0.78	9.25	1.00	1.00	16.25	6.50	9.00	11.50	1 1/4-7 UNC	12.00	9.50	6.50	9.00



WEIGH MODULES