

MSI-9750A

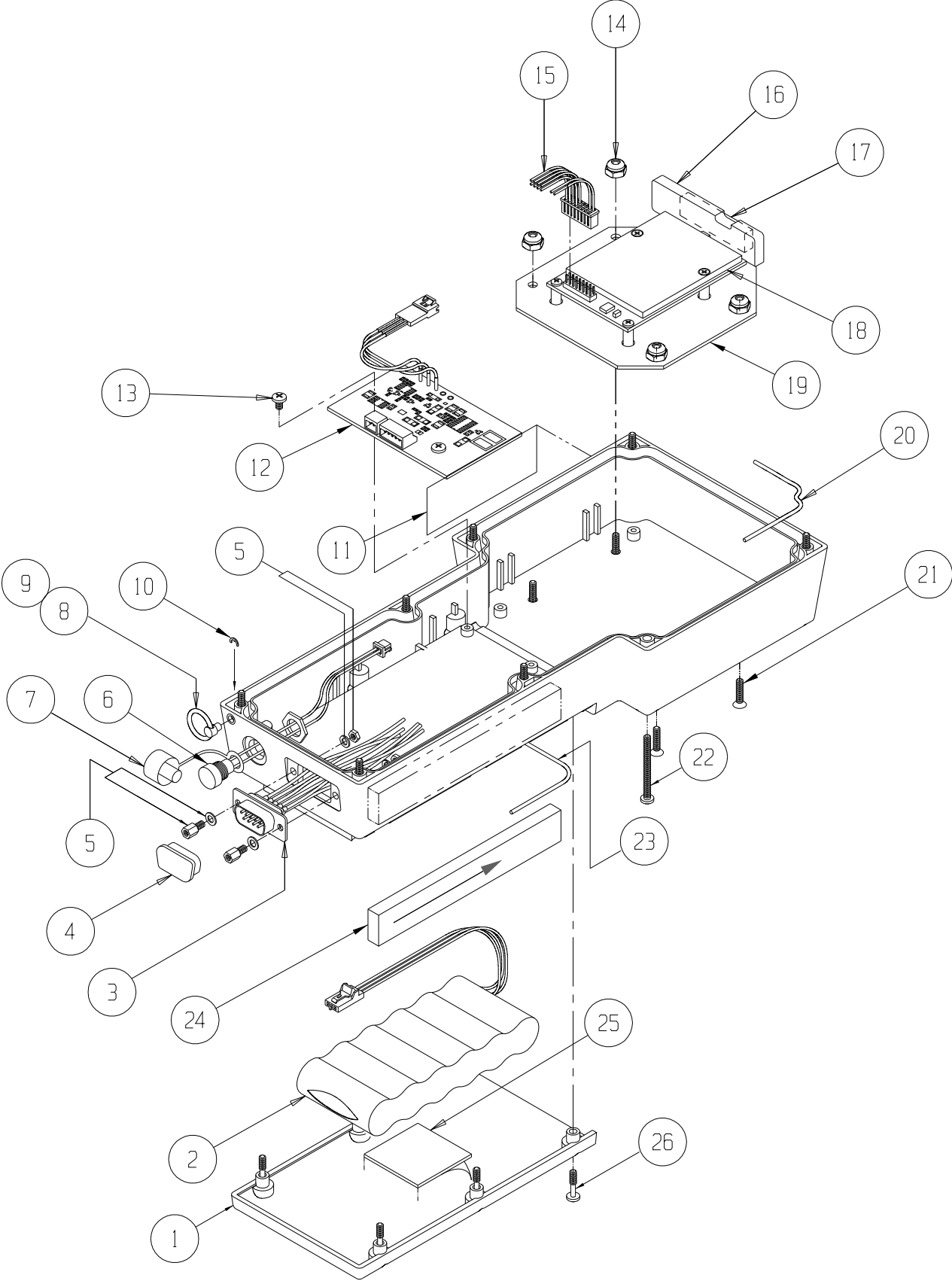
Back Assembly



Part Number/Price

Item #	Part #	Description	Price
1	148950	Enclosure	\$190.00
2	143709	Battery assembly 7.2 volt	\$160.00
3	149079	Cabel assembly, RS232	\$130.00
4	143787	Dust cover	\$4.00
5	143751	Screwlock assembly female 4-40	\$4.00
6	148949	Cable assembly, power jack	\$48.00
7	144095	Cover power jack	\$16.00
8	148953	Lanyard pin 1/8 in	\$24.00
9	144096	Split ring .6	\$2.00
10	144097	E-clip .125	\$2.00
11	148637	Tag, serial	\$3.35
12	148955	PCA, battery charger	\$235.00
13	143842	Screw, pan head, 4-24 × 3/16, Phillips, stainless steel	\$1.00
14	146627	Nut, hex, #6, nyloc	\$0.75
15	138489	Cable assembly, 2450 modem to CPU	\$92.00
16	143454	Antenna housing with straight MMCX connector	\$110.00
17	148799	Pad, poron 1.5 × .375 × .188	\$3.00
18	144158	2450 modem, RF, 2.4 GHz	\$675.00
19	149112	Mounting bracket, 2450 modem	\$46.00
20	143843	Gasket, enclosure	\$17.00
21	146577	Screw, flat head, 6-32 × 1/2, Phillips, stainless steel black	\$0.75
22	143881	Screw, pan head, 4-40 × 1.38, Phillips, stainless steel	\$2.00
23	143844	Gasket, battery	\$17.00
24	148859	Pad poron 4.25 × .63 × .25	\$3.50
25	148837	Pad poron 1.25 × 1.25 × .60	\$3.00
26	143882	Screw, pan head, 4-40 × .50 Phillips, stainless steel	\$2.00

REPLACEMENT PARTS



REPLACEMENT PARTS