



ENGINEERED STEAM BOILER SYSTEMS

Partner with Fulton to develop an engineered solution for any steam application.

- ▶ Lowest Cost of Ownership
- ▶ Longest Equipment Life
- ▶ Highest System Efficiency



Major Fulton Differentiators

With over 40 years of system design and manufacturing expertise, Fulton provides packaged solutions that are easy to install and service.

- ▶ **Industry-leading boiler specification and performance**
- ▶ **Highly customizable package solutions**
- ▶ **Single-point connections**
- ▶ **Full skid deck designed for easy service and maintenance**
- ▶ **Rapid submittal and BIM information available**



Contact your local representative to learn how you can extend your pressure vessel warranty to 10 years with an engineered system.

Performance Benefits

Fulton systems are engineered for efficiency, longevity, and performance, featuring modular designs for inherent redundancy and high system turndown for fuel savings.

- ▶ **Modular boiler design provides inherent redundancy**
- ▶ **High system turndown delivers fuel savings**
- ▶ **Large capacity systems in a compact footprint**
- ▶ **Fulton steam header design ensures dry steam supply**
- ▶ **Prolongs equipment life**

Project Benefits

Fulton's engineered skid packages ensure that interconnecting boiler piping is designed correctly, delivering a complete system for rapid on-site assembly, saving time and costs.

- ▶ **Fulton assumes design responsibility for the entire engineered system**
- ▶ **Save or eliminate design time for the engineer of record**
- ▶ **Rapid on-site assembly reduces project time and costs for the end customer**
- ▶ **Fulton piping, welding, and electrical work reduces on-site labor hours**
- ▶ **Comprehensive documentation provided in a single package**

Engineered Solutions

Fulton designs and builds custom systems to meet your specific needs. With years of design expertise, Fulton's system specialists support projects from conception to commissioning, ensuring timely and accurate system completion.

- ▶ Custom-tailored for your application
- ▶ Single-source turnkey systems
- ▶ Indoor and outdoor options available
- ▶ Wide range of ancillary equipment
- ▶ Ideal for new construction or retrofits

SINGLE-SOURCE PROVIDER

Fulton carries a full range of steam boilers and ancillary equipment to meet customer needs.

PACKAGED SOLUTION

STEAM SYSTEMS

Safe and efficient, steam systems are technology neutral and support a wide variety of present-day and future heating solutions.

Design for the Future

Fulton can design engineered systems with future expansion in mind, allowing for seamless integration of additional boiler capacity as needed.

- ▶ Allows for phased capital expenditure
- ▶ Plug-and-play future equipment
- ▶ Ancillary equipment sized for future expansions

FUTURE PROOF



LOGISTICAL SOLUTIONS

All Fulton systems can be broken into pieces which are easily transported to the end customer.

Single-Source Provider



Scan the QR code to see how a Fulton engineered system is reassembled.

- ▶ **Wide range of boiler models**
- ▶ **Deaerators**
- ▶ **Feedtanks**
- ▶ **Blowdown Tanks**
- ▶ **Water Treatment Equipment**
- ▶ **Economizers**
- ▶ **Controls**

SINGLE-POINT STEAM

All interconnecting steam piping can be supplied with a single customer connection. Fulton sizes and designs all steam piping, incorporating proper steam system design practices.

SINGLE-POINT ELECTRIC

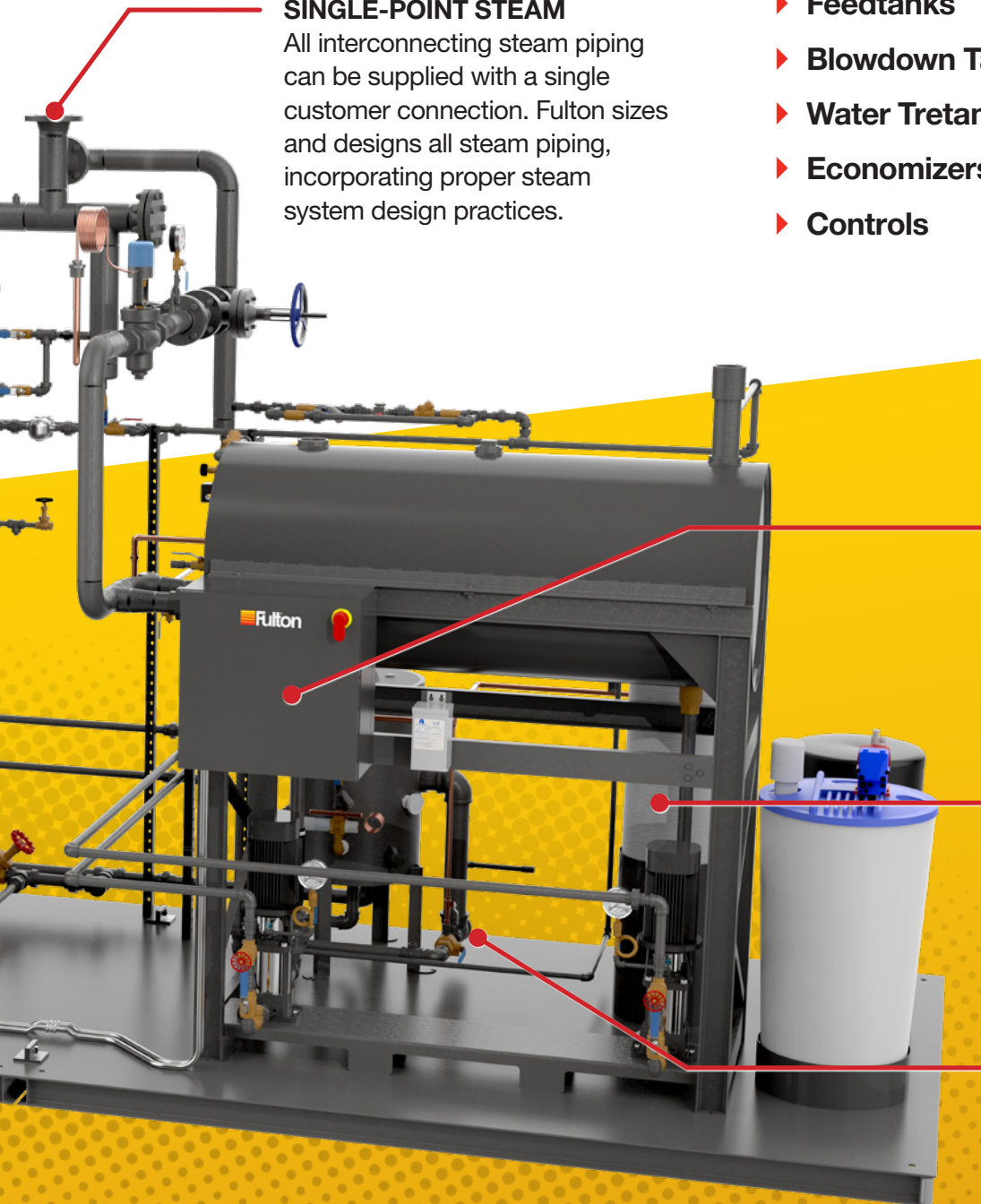
All equipment power distributed throughout the system from a single panel box. Conduit and wire supplied as part of system.

SINGLE POINT WATER

Single customer connection for city water. Fulton piping will distribute the water throughout the system where it is needed.

SINGLE POINT DRAIN

Blowdown, overflow and drains for all equipment piped to a single drain connection.



MODSYNC®

Boiler System Management Solutions

Modsync is Fulton's own control platform, incorporating over 75 years of experience in the heat transfer industry. The Modsync platform is designed to aid in system control to ensure proper equipment function, communication and longevity. Modsync Controls are often incorporated in engineered system packages for reliable control of equipment.



MODSYNC SE

Plant Sequencing Controller

ModSync SE is BACnet configurable and provides off-the-shelf sequencing for centralized plants with lead-lag of steam boilers. Seamlessly integrate various boiler controllers into a single system.

MODSYNC FW

Feedwater System Controller

ModSync FW provides unmatched precision and flexibility in automating steam boiler feedwater systems. With advanced monitoring and control features, it ensures optimal performance for feedwater and deaerator tanks, giving operators broad insights into system functionality.



MODSYNC LX

Custom Engineered Controls

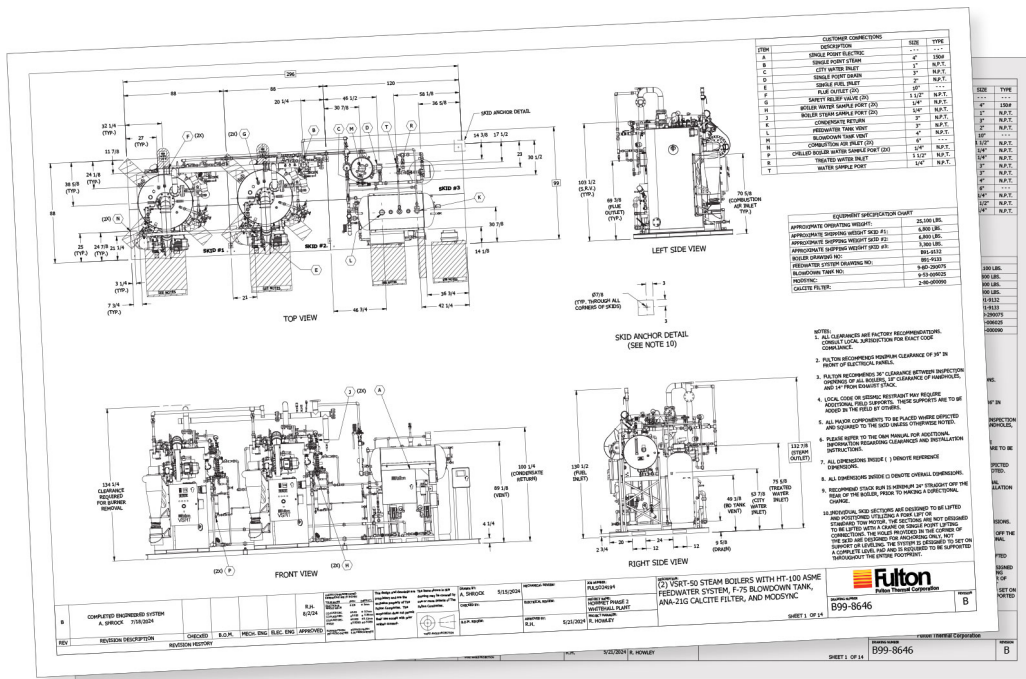
Control system functions and Sequence of Operation (SOO) are custom tailored to meet the unique demands of your project. ModSync LX provides the flexibility the flexibility required for complex, high-performance applications which cannot be met by rigid off-the-shelf options or integrated boiler control systems.



Complete Submittal Packages

Fulton's complete submittal packages include individual equipment submittal drawings and job-specific files provided in multiple formats, ensuring detailed and accessible project documentation.

- ▶ Individual Submittal Drawings for Equipment
- ▶ Detailed System Layout Diagram
- ▶ Complete System P&ID Diagram
- ▶ Full Electrical Diagrams for Major Equipment
- ▶ Job-Specific Drawings provided in .PDF format and available in .DWG, .STP, and .RFA (Revit) file formats.



Questions? We have answers.

Fulton is a global manufacturer offering customer support worldwide. Whatever your application, our local representatives are ready to help you find the ideal solution for your heat transfer needs.

Visit fulton.com/sales to locate your representative and request a quote.



Call: (315) 298-5121

972 Centerville Road
Pulaski, NY 13142

fulton.com/engineered
Drawings & documentation available online

ENGINEERED-SYSTEMS_BROCHURE-241220

