

F-102 Gen-5 Bench Fume Hood

F-102 Isolator Gen-5 Bench Fume Hood - Horizontal Sash

ISOLATOR Gen-5 Bench Fume Hood - This general purpose fume hood is designed to meet most laboratory Constant Air Volume (CAV) or Variable Air Volume (VAV) requirements and supplied with and automatic compensating upper by-pass. For VAV, use option MOD-0004 for a restricted by-pass position of observation glass. Designed to mount on a 31" deep counter top. The ISOLATOR Gen-5 bench mounted fume hood is supplied with the following standard features:

Sash System – Top hung epoxy urethane coated framed horizontal sashes offer exceptional product life-cycle and minimize barriers.

Sash Design - 1/4" thick tempered safety glass is set in horizontal sliding epoxy urethane coated steel frames. Optional laminated safety glass or polycarbonate available for special applications. Hood has a horizontal only sash with a 42" exterior sightline.

Stainless Steel Type 304 Exhaust Collar - Round collar which allows for direct connection to typical exhaust ducts to reduce duct transition costs, minimize static pressure losses and exhaust noise levels.

Electrical - Two UL/CSA approved duplex receptacles provided for 120 volt service, one on each corner post. UL/CSA approved LED light fixture and switch provided. Explosion proof fixtures are available options.

Plumbing - Both corner posts are pre-punched to accept a maximum of five plumbing fittings per post. Factory pre-plumbing is available as well as plumbing fixtures from a variety of manufacturers to meet most plumbing needs.

Access Panels - Interior overlay style access panels provide convenient access and prevent accidental removal. Exterior side panels are also removable for ease of access to plumbing and electrical service fixtures.

Standards - UL 1805 Classified and tested in accordance with ASHRAE 110. Test results available upon request.

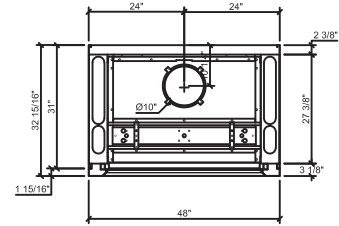
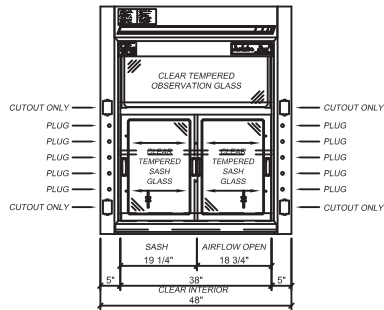


Rendering shown with optional features

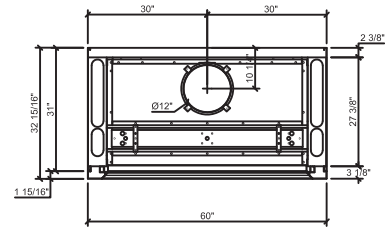
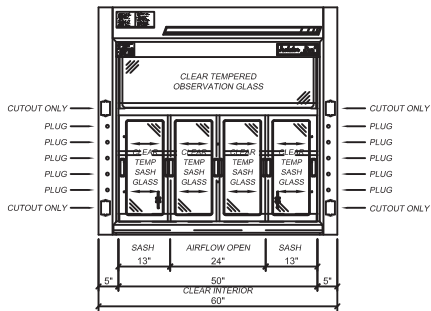
Catalog Number	Width	Clear Interior Depth	Duct Diameter	28" Vertical Open @ 100 FPM	18" Vertical Open @ 100 FPM	50% Horizontal Open @ 100 FPM
F-102-48G5	48"	24"	1:10"	N/A	N/A	445 CFM @ .10" SP
F-102-48G5D30	48"	30"	1:10"	N/A	N/A	445 CFM @ .10" SP
F-102-60G5	60"	24"	1:12"	N/A	N/A	572 CFM @ .09" SP
F-102-60G5D30	60"	30"	1:12"	N/A	N/A	572 CFM @ .09" SP
F-102-72G5	72"	24"	1:12"	N/A	N/A	714 CFM @ .15" SP
F-102-72G5D30	72"	30"	1:12"	N/A	N/A	714 CFM @ .15" SP
F-102-96G5	96"	24"	2:10"	N/A	N/A	984 CFM @ .13" SP
F-102-96G5D30	96"	30"	2:10"	N/A	N/A	984 CFM @ .13" SP

F-102 Gen-5 Bench Fume Hood

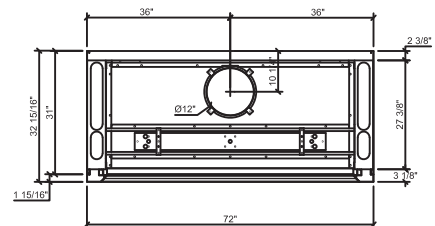
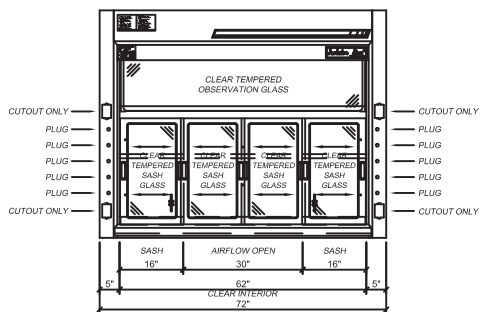
F-102-48G5 - 48" Wide



F-102-60G5 - 60" Wide

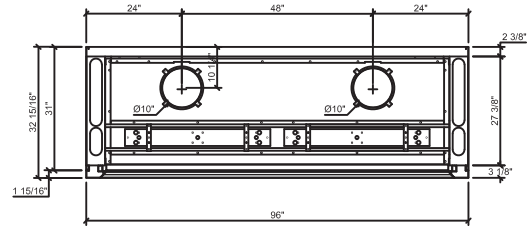
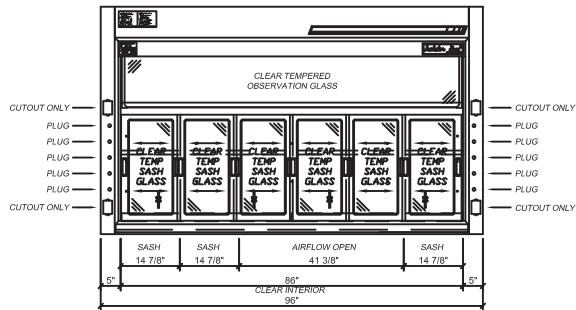


F-102-72G5 - 72" Wide

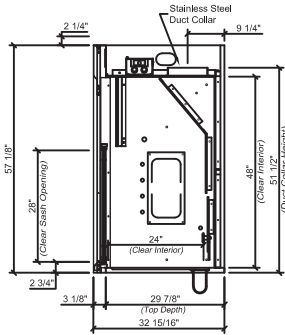


F-102 Gen-5 Bench Fume Hood

F-102-96G5 - 96" Wide



Section - Standard Depth



Section - 30" Deep

