

# MVE 1536 Dry Shipper

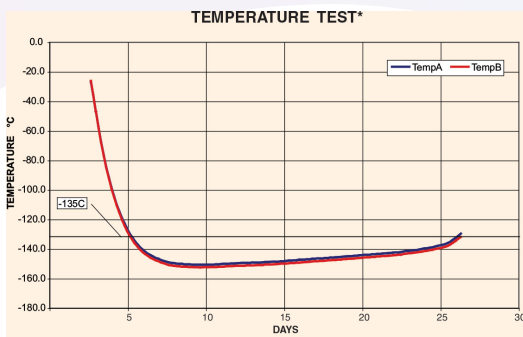
## Securely Ship Large Volumes of Samples in Vapor

MVE 1536 Dry Shipper incorporates a rigid steel Isoframe that is sized to fit in a wide-body aircraft and can be moved with a pallet jack and/or forklift. Complete with lockable inventory tray to prevent rotation during transit and a lockable lid. A data logger is included as standard to monitor and record sample temperature during transportation or relocation.



## Key Features

- Liquid Nitrogen absorbent can be charged for dry shipment
- Hold time up to 20 days when properly charged
- Rigid steel frame can be moved with pallet jack/ forklift
- Sized to fit in a wide-body aircraft
- Inventory tray locks to prevent rotation during transit
- Locking lid
- Includes data logger to monitor and record sample temperature during shipment or relocation



### Temperature Test Graph

\* Temp Test indicates typical performance of MVE 1536PD freezer with full inventory system and factory recommended level settings. Actual performance may vary with atmospheric conditions and usage.

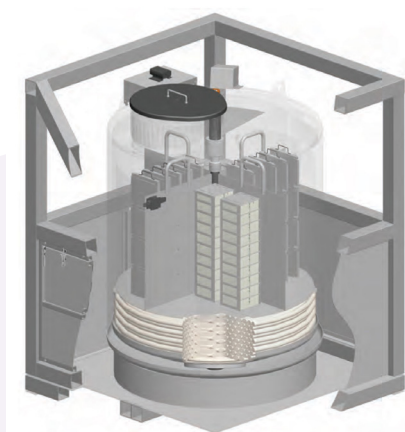
# MVE 1536 Dry Shipper

Maximum Storage Capacity	
○ 1.2 & 2 ml Vials (Internally Threaded)	36400
○ Quantity of Large Racks 100 cell boxes	24
○ Quantity of Mini Racks 25 cell boxes	16
○ Number of Shelves per Rack	13
Performance	
○ Absorbed LN <sub>2</sub> Capacity L est.	320
Unit Dimensions	
○ Neck Opening in. (mm)	17.5 (444)
○ Usable Internal Height in. (mm)	30 (762)
○ Inner Diameter in. (mm)	38.5 (978)
○ Overall Height including Frame** in. (mm)	64 (1625)
○ Liftover Height in. (mm)	42.1 (1070)
○ Step Height in. (mm)	20.5 (521)
○ Depth of Fold Down Step in. (mm)	10.8 (274)
○ Footprint in. (mm)	52x52 (1321x1321)
○ Weight Empty* lb. (kg)	1600 (726)
○ Weight Liquid Full* lb. (kg) est.	2044 (927)

## THREE Year Vacuum Warranty • TWO Year Parts Warranty

Conforms to MDD 93/42/EEC, the Medical Device Directive for the EU. Freezer systems UL/C-UL Listed.

\* Without inventory | \*\*Contact Tech Service for detailed drawings.



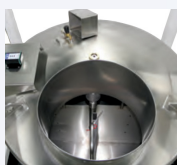
### Tank Features



Locking Cabinet



Data Logger



Top View



Tray

### Rack Layout

Square Rack Layout

