



Hospital Autoclaves

For CSSDs, OR and Medical Centers

 Horizontal Line


Tuttnauer



Hospital Autoclaves

Tuttnauer hospital autoclaves ensure reliable sterile processing for Hospital CSSD, OR, and Medical Centers. The sterilizers are designed and manufactured in a state-of-the-art facility in compliance with strict international standards to ensure safe re-use of sterilized equipment.

Experience Since 1925

As a global business Tuttnauer has manufactured products for over 95 years that have developed a reputation for their quality, high performance and reliability, sophisticated features, and ability to satisfy customer expectations. Tuttnauer's sterilization & infection control products are trusted at over 350,000 installations worldwide including Hospitals, Clinics and Laboratories.

Exceptional Support Worldwide

Tuttnauer's staff provides expert pre-sales and after-sales support services to satisfy customer expectations. Our teams are made up of multi-cultural people who are able to comfortably work with customers around the world. Tuttnauer provides in-depth face-to-face training in many locations around the world to ensure that Tuttnauer technicians and engineers are experts in their ability to support each customer's technical service needs.

At Tuttnauer we highly value customer feedback which contributes to the continuous improvement of our products and support services.





Green Water Saving

The optional AquaMinimal Radiator water saving systems are the best solution to minimize water consumption by 50%.



Uniform Heat Distribution

Fully jacketed chambers ensure uniform heat distribution to ensure consistent sterilization conditions for all loads inside the chamber. A chamber that is not fully jacketed may have cool spots which can cause improper sterilization.



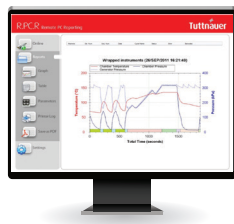
Stainless Steel Piping

Stainless steel piping and connectors are used to avoid corrosion which is necessary to safeguard the integrity of the autoclave and prevent contamination of the sterilized loads (either as chemical or particulate contamination).



Perfectly Optimized Cycles

With years of research and customer feedback we have fine-tuned our formula for perfectly optimized cycles with the precise combination of pulses, timing, temperature control, speed and drying.



Load Traceability

The optional R.PC.R software allows for tracing sterilized loads by barcode. All cycle records and associated barcodes are automatically recorded to a PC on your network. In addition R.PC.R allows for convenient access to cycle reports, including graphs and tables (in PDF format).

Advanced Control System for Your CSSD

Take advantage of Tuttnauer's sophisticated user-friendly control systems for repeatable high performance.

Standard Features

- 7" Multi-color touch screen panel
- Keypad control panel on second door of two door autoclaves with Bacsoft controller
- Stores the last 200 cycles in built-in memory (Bacsoft)
- Multiple access levels and user passwords to control access/operation of the autoclave
- Diagnostic In/Out test (enables technician to check each system component separately)
- Sterilization Temperature range 105°C to 138°C

Load Tracing with Barcodes

When loading the autoclave a barcode reader can be used to scan the barcodes of each load. Once the cycle starts the barcode numbers will be printed together with cycle information.

Optional Features

- 10" Multi-color touch screen
- 21 CFR part 11

Process Workflow Management Data Connection

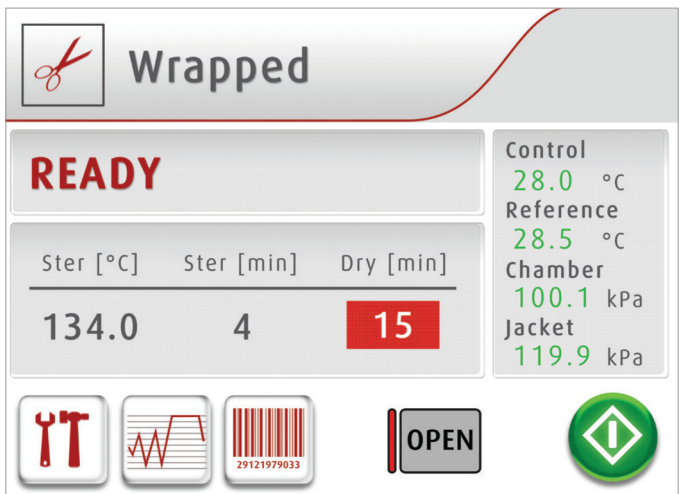
Provides real-time data to any process workflow management system supporting Modbus

Cycle Programs

Horizontal Autoclaves are preprogrammed with 8 perfectly optimized cycle programs that cover the processing needs of most CSSDs and Operating Rooms.

8 Preset Cycle Programs

- Unwrapped cycle for operating rooms (OR) that need surgery instruments for immediate use
- Wrapped and double wrapped loads for CSSD processing on instruments and textiles at 134°C and 121°C for delicate instruments
- Additional special program cycles for prion applications and special wrapping materials



Sophisticated Touch Screen HMI

The HMI (Human Machine Interface) has been designed with the following considerations:

- Multi-color display for easier reading from a distance
- Multilingual (26 languages)
- Graphical display of Temperature and Pressure trend graphs



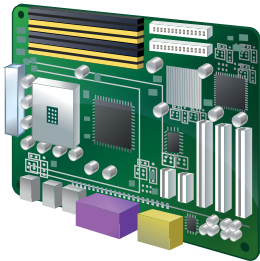
2 Test Cycles

- Bowie Dick/Helix for steam penetration testing
- Leak test to check vacuum integrity

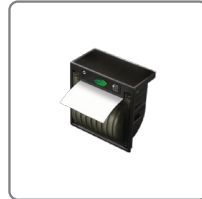
Custom Cycles

- 20 cycles available for customized cycle programs

Bacsoft Controller



STANDARD



Printer

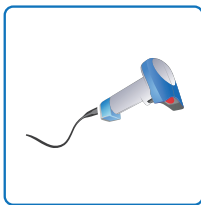


Touch Screen
Loading side



Remote Internet access
for Technical Support
(requires R.P.C.R. and local
cellular router for
Internet connection)

OPTIONAL



Barcode
Reader



Touch Screen
Unloading side



R.P.C.R software
for access from
remote PC on
internal network

Load Tracing & Automatic Recording of Cycle Information to Your PC

R.P.C.R Software (optional)

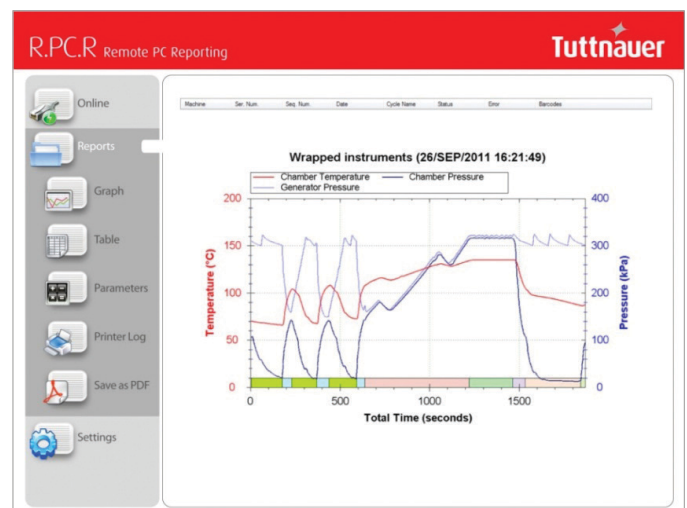
Cycle Records You Can Rely On

- Automatic recording of cycle information to any PC on your network via Ethernet
- Convenient access to graphs and tables that are easy to understand
- Easily generate PDF reports
- No need to file printouts, saving you time

Load Traceability

Conveniently trace loads from a PC on your network with R.P.C.R software. When barcodes of loads are scanned before a cycle starts, the barcode information is reported together with the cycle records.

With R.P.C.R you can see: Graphs of the cycle data, Numeric cycle data, Cycle print-outs, Measured values table, Parameter table.



Horizontal 55 Compact Series

Compact autoclaves with chamber volume 250 Liters.

The 55 series is available with one door options:

- Fully automatic vertical sliding door
- Manual hinged door

Model	Chamber Dimensions (WxHxD) mm	Chamber Volume (Liter)
5596	508 x 508 x 970	250

Horizontal 66 Mid Range Series

Mid-size autoclaves with chamber volumes ranging from 450 Liters to 610 Liters.

The 66 series is available with one door options:

- Fully automatic vertical sliding door
- Hinged door with automatic locking

Model	Chamber Dimensions (WxHxD) mm	Chamber Volume (Liter)
66120	610 x 610 x 1215	450
6671130	660x710 x 1295	610

Horizontal Line



5596 Vertical Sliding Door

66120 Automatic Hinged Door

6671130 Vertical Sliding Door - Control Panel on Side

Horizontal 69 Large Capacity Series

Large autoclave with chamber volume of 1010 Liters.

The 69180 model is available with one or two hinged door with automatic locking.

Model	Chamber Dimensions (WxHxD) mm	Chamber Volume (Liter)
69180	610 x 910 x 1815	1010



Automatic Hinged Door

Green AquaMinimal Systems

Save Water & the Environment

Water Saving

Hospitals autoclaves traditionally consume significant amounts of water using utility resources and increasing operational cost. Customers are increasingly looking for eco-friendly green features. Tuttnauer's water saving system will make your facility more environmentally-friendly and cost-efficient by saving hundreds of liters of water per cycle.

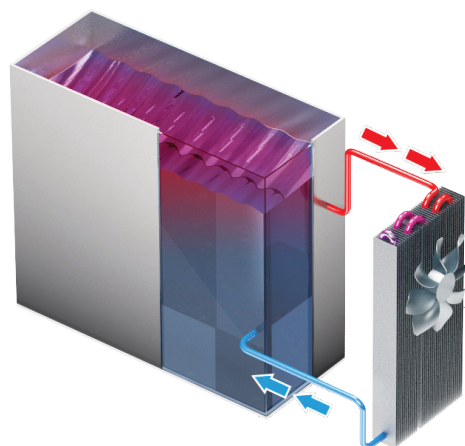
Most water consumption of an autoclave takes place during effluent cooling via a heat exchanger and during vacuum-pump cooling when generating a vacuum in the chamber.

Tuttnauer's water saving systems reduces the water usage during effluent cooling and vacuum generation thereby making efficient use of water.



AquaMinimal- Radiator

The AquaMinimal -Radiator reduces tap water consumption by as much as **50%**.



A powerful radiator system cools and re-circulates water used in the autoclave

Loading Equipment

High quality stainless steel loading equipment for loading and unloading.

- **Pull Out Trays**

Stainless steel trays equipped with rails for easy loading and unloading. The rails are designed to prevent the trays from rolling over .

- **Loading Carts and Transfer Carriages**

The 316L loading carts are designed to roll from the transfer carriage onto the chamber rails for easy handling of heavy loads. To ensure safety and ease-of-use the carriage is equipped with a lock preventing sliding of the cart. Swivel wheels with wheel breaks maximize mobility in limited space.



Complimentary Products

- **Ultrasonic Cleaner**

Deep cleaning of hollows before sterilization



- **Sealing Machine**

For sealing instruments in pouches for sterile storage



Horizontal Line

Safety

Safety for personnel, autoclave and load are priority in the design, construction and operation of any Tuttnauer autoclave. Tuttnauer is committed to the highest industry safety standards and directives to ensure safety not only for your employees operating the autoclaves but also for your sterile processing facility and the loads being sterilized.

Tuttnauer autoclaves are provided with redundant independent monitoring systems and audiovisual alarms to notify operators of any issue that requires attention. An emergency stop button on the loading side of the autoclave may be used to safely stop the autoclave cycle.

Standards

Directives, Guidelines & Technical Standards

- EN 285: 2015 Large Steam Sterilizer
- 2012/19/EU WEEE and EU 2017/2102 RoHS
- 2014/30/EU - Electromagnetic compatibility
- Medical Device Regulation (EU) 2017/745
- ANSI \ AAMI \ ST55: 2016 Table Top steam sterilizer

Pressure Vessel and Steam Generator Construction Standards

- 2014/68/EU - Pressure Equipment Directive
- ASME Code, Section VIII, Division 1, unfired pressure vessels
- ASME Code, Section I, for boilers

Tuttnauer pressure vessels are both ASME and PED certified. All ASME certified vessels are inspected by an independent authorized ASME inspector.

Safety and EMC Standards

- IEC 61010-1:2010/AMD1:2016/COR1:2019 Safety Requirements for measurement control and laboratory use
- IEC 61010-2-040: 2015 Safety requirements for sterilizers used to treat medical materials
- EN 61326-1: 2013 Electrical Equipment for EMC requirements

Quality System Compliance

- ISO 9001:2015 - Quality Management Systems
- In compliance with FDA QSR 21 CFR part 820 & part 11
- Canadian MDR (CMDR) SOR/98-282 (2018), consolidated



 *Learn from our Experts*
Join our blog tuttnauer.com/blog



Horizontal Line

International Sales and Marketing
Contact us at <https://tuttnauer.com/contact>
Website: tuttnauer.com



Tuttnauer Europe b.v.
Hoeksteen 11, 4815 PR
P.O.B. 7191, 4800 GD Breda
The Netherlands
Tel: +31 (0) 765 423 510 Fax: +31 (0) 765 423 540
E-mail: info@tuttnauer.nl

Tuttnauer USA Co.
345 Oser Ave,
Hauppauge, NY 11788
Tel: +800 624 5836, +631 737 4850 Fax: +631 737 0720
E-mail: info@tuttnauerUSA.com



Distributed by:

L TR330-0004-SP-REV/B/09 2024