



VMP™

Vertical Multi-Port Boiler (Steam & Hot Water)

40 – 150 BHP



- ▶ Efficiencies up to 84%
- ▶ Compact Footprint
- ▶ High-Quality Steam



ALL MODELS:

1,380 – 5,175 lbs/h Output F&A 212°F
ASME Section I & IV Designs to 300 PSI

ENGINEERED TO ENDURE

Designed for heavy-duty applications, the VMP® is Fulton's Vertical Multi-Port steam boiler. The compact vertical design of the VMP has been proven through decades of successful installations and provides exceptional value over the lifetime of the boiler.



▶ Rugged Design

Pressure vessel thickness is 30% greater than ASME requirements and is backed by an unmatched 5-year warranty.

▶ Engineered for the Long Haul

The vertical tubeless design of the VMP is built to last. Heavy-walled schedule 80 flue pipes help VMP boilers last 25 years or more.

▶ High Quality Steam

Specifiable steam quality greater than 99% makes the VMP ideal for food processing, sterilization, and humidification applications.

▶ Compact Size

The compact vertical design minimizes jacket losses and requires less floor space than competing boilers, reducing installation costs.

▶ Versatile Design

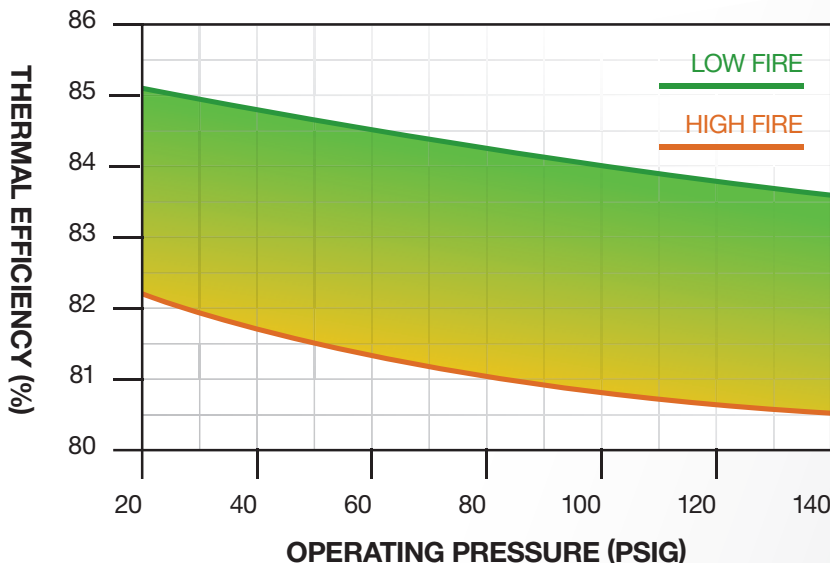
For critical heating processes requiring fuel redundancy, VMP boilers can be configured for dual-fuel operation.

▶ Advanced Technology

VMP boilers with linkageless controls can reach up to 8:1 turndown. Low NOx options are available.

Efficiency Range

STANDARD GAS BURNER, 10% CO₂



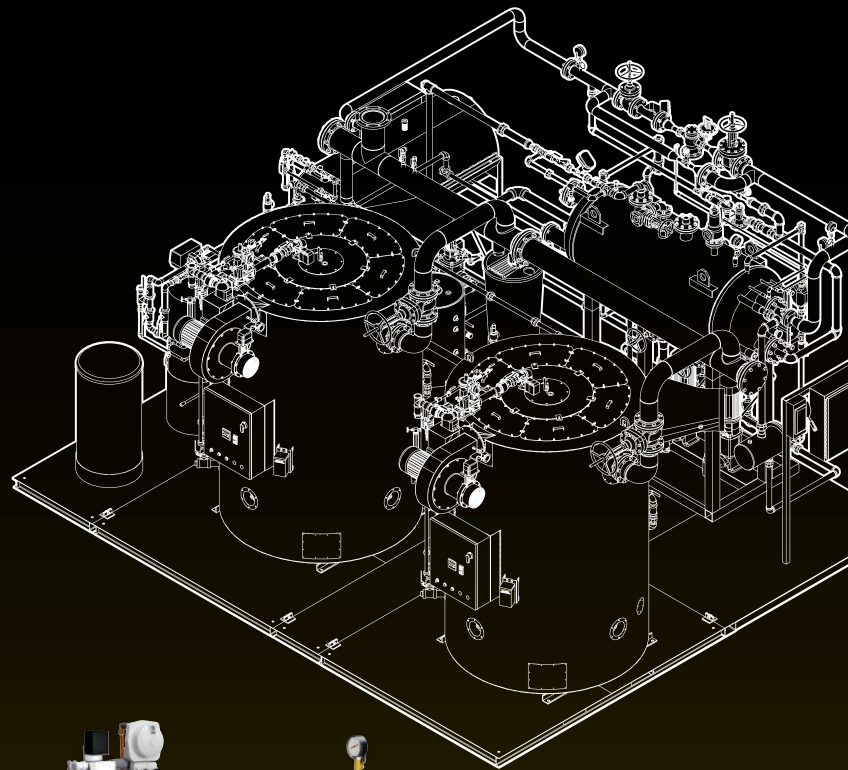
INDUSTRY LEADING EFFICIENCIES

VMP boilers have been engineered to achieve 4-pass efficiency in a compact 2-pass design. Utilizing parallel positioning controls, the VMP provides superior fuel-to-steam efficiencies up to 85%.

IDEAL FOR MODULAR ARRAYS

- ▶ Reduces Overall Footprint
- ▶ Minimizes Standby Losses
- ▶ More Efficient Modulation
- ▶ Highest Seasonal Efficiencies
- ▶ 10-year Pressure Vessel Warranty*

* Available on Fulton Engineered Systems



BETTER BY DESIGN

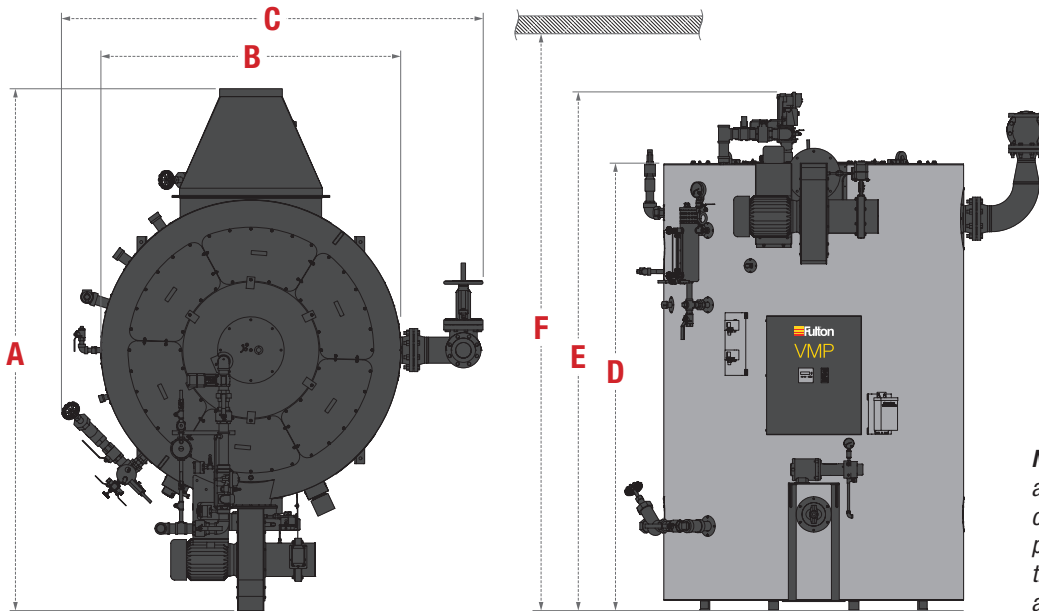
Competing boiler designs are prone to scale buildup and costly tube failure. The vertical tubeless design of the VMP minimizes these issues while maximizing system efficiencies and extending boiler life.



- A** Combustion air inlet includes an integrated preheat from the hot flue gases below.
- B** Zero-impingement vertical flame permits low emissions and increases vessel longevity.
- C** Optimized internal circulation prevents stratification and reduces warm-up time. Vertical design reduces pitting – bubbles rise away from surfaces with zero side impact.
- D** Schedule 80 flue pipes utilize "ribboned" turbulators to maximize overall heat transfer.

SPECIFICATIONS & DIMENSIONS

| | MODEL | VMP-40 | VMP-49.5 | VMP-50 | VMP-60 | VMP-80 | VMP-100 | VMP-130 | VMP-150 |
|------------------------------|-------|--------|----------|--------|--------|--------|---------|---------|---------|
| SPECIFICATIONS | | | | | | | | | |
| Fuel Input (Natural Gas) | CFH | 1,594 | 1,974 | 1,993 | 2,392 | 3,188 | 3,986 | 5,181 | 5,979 |
| Fuel Input (Propane) | CFH | 638 | 790 | 797 | 957 | 1,275 | 1,594 | 2,082 | 2,392 |
| Fuel Input (#2 Oil) | GPH | 11.4 | 14.1 | 14.3 | 17.1 | 22.8 | 28.5 | 37.1 | 42.8 |
| Steam Output | LB/HR | 1,380 | 1,708 | 1,725 | 2,070 | 2,760 | 3,450 | 4,485 | 5,175 |
| Output | MBH | 1,339 | 1,658 | 1,674 | 2,009 | 2,678 | 3,348 | 4,352 | 5,022 |
| Water Capacity (Operating) | GAL | 153 | 231 | 219 | 245 | 348 | 477 | 749 | 749 |
| DIMENSIONS | | | | | | | | | |
| (A) Depth | IN | 97 | 105 | 101 | 101 | 112 | 119 | 130 | 136 |
| (B) Width w/o Trim | IN | 54 | 58 | 58 | 58 | 66 | 75.5 | 84 | 84 |
| (C) Width w/ Trim | IN | 83 | 86 | 87 | 87 | 97 | 105 | 111 | 112 |
| (D) Height w/o Trim | IN | 93 | 97 | 97 | 103 | 109 | 109 | 121 | 121 |
| (E) Height w/ Trim | IN | 105 | 109 | 109 | 115 | 121 | 121 | 133 | 133 |
| (F) Burner Pull Height | IN | 110 | 115 | 115 | 125 | 130 | 132 | 133 | 145 |
| Steam Outlet (150 PSI, trim) | IN | 3 | 3 | 3 | 3 | 4 | 4 | 4 | 4 |
| Flue Outlet | IN | 12 | 12 | 12 | 12 | 14 | 14 | 14 | 16 |
| WEIGHTS | | | | | | | | | |
| Shipping Weight | LBS | 5,900 | 6,500 | 6,800 | 7,500 | 9,300 | 10,600 | 15,500 | 16,400 |
| Operating Weight | LBS | 7,175 | 8,424 | 8,631 | 9,545 | 12,208 | 14,577 | 21,749 | 22,649 |



NOTE: Specifications and dimensions are approximate and for reference only. Fulton practices continuous product improvement and reserves the right to change specifications and/or dimensions without notice.



Call: (315) 298-5121

972 Centerville Road
Pulaski, NY 13142



fulton.com/vmp

Drawings & documentation available online

VMP_BROCHURE_250306

